



SZABO SCANDIC

Part of Europa Biosite

Produktinformation



Forschungsprodukte & Biochemikalien



Zellkultur & Verbrauchsmaterial



Diagnostik & molekulare Diagnostik



Laborgeräte & Service

Weitere Information auf den folgenden Seiten!
See the following pages for more information!



Lieferung & Zahlungsart

siehe unsere [Liefer- und Versandbedingungen](#)

Zuschläge

- Mindermengenzuschlag
- Trockeneiszuschlag
- Gefahrgutzuschlag
- Expressversand

SZABO-SCANDIC HandelsgmbH

Quellenstraße 110, A-1100 Wien

T. +43(0)1 489 3961-0

F. +43(0)1 489 3961-7

mail@szabo-scandic.com

www.szabo-scandic.com

[linkedin.com/company/szaboscandic](https://www.linkedin.com/company/szaboscandic) 



GTF2A2 MaxPab mouse polyclonal antibody (B01) MaxPab®

Catalog # : H00002958-B01

規格 : [50 uL]

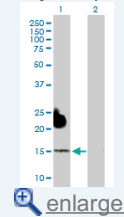
[List All](#)

Specification

Product Description:	Mouse polyclonal antibody raised against a full-length human GTF2A2 protein.
Immunogen:	GTF2A2 (AAH00287, 1 a.a. ~ 109 a.a) full-length human protein.
Sequence:	MAYQLYRNTTLGNSLQESLDELISQSQITPQLALQVLLQFDKAINAALAQ RVRNRVNFGRSLNTYRFCDNWTFVLNDVEFREVTELIKVDKVKIVACD GKNTGSNTTE
Host:	Mouse
Reactivity:	Human
Quality Control Testing:	Antibody reactive against mammalian transfected lysate.
Storage Buffer:	No additive
Storage Instruction:	Store at -20°C or lower. Aliquot to avoid repeated freezing and thawing.
Note:	For IHC and IF applications, antibody purification with Protein A will be needed prior to use.
MSDS:	 Download
Datasheet:	 Download

Application Image

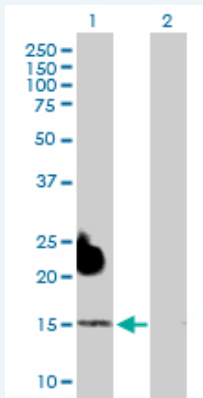
Western Blot (Transfected lysate)



 [enlarge](#)


Applications

Western Blot (Transfected lysate)



Western Blot analysis of GTF2A2 expression in transfected 293T cell line ([H00002958-T03](#)) by GTF2A2 MaxPab polyclonal antibody.

Lane 1: GTF2A2 transfected lysate(12.10 kDa).
Lane 2: Non-transfected lysate.

 [Protocol Download](#)

Gene Information

Entrez GeneID: [2958](#)

**GeneBank
Accession#:** [BC000287.2](#)

**Protein
Accession#:** [AAH00287.1](#)

Gene Name: GTF2A2

Gene Alias: HsT18745,TF2A2,TFIIA

**Gene
Description:** general transcription factor IIA, 2, 12kDa

Omim ID: [600519](#)

Gene Ontology: [Hyperlink](#)

Gene Summary: Accurate transcription initiation on TATA-containing class II genes involves the ordered assembly of RNA polymerase II (POLR2A; MIM 180660) and the general initiation factors TFIIA, TFIIIB (MIM 189963), TFIIID (MIM 313650), TFIIIE (MIM 189962), TFIIIF (MIM 189968), TFIIIG/TFIIJ, and TFIIH (MIM 189972). The first step involves recognition of the TATA element by the TATA-binding subunit (TBP; MIM 600075) and may be regulated by TFIIA, a factor that interacts with both TBP and a TBP-associated factor (TAF; MIM 600475) in TFIIID. TFIIA has 2 subunits (43 and 12 kD) in yeast and 3 subunits in higher eukaryotes. In HeLa extracts, it consists of a 35-kD alpha subunit and a 19-kD beta subunit encoded by the N- and C-terminal regions of GTF2A1 (MIM 600520), respectively, and a 12-kD gamma subunit encoded by GTF2A2 (DeJong et al., 1995 [PubMed 7724559]).[supplied by OMIM

**Other
Designations:** OTTHUMP00000196512,OTTHUMP00000196515,general transcription factor IIA, 2 (12kD subunit)

Gene Pathway

[Basal transcription factors](#)