



# SZABO SCANDIC

Part of Europa Biosite

## Produktinformation



Forschungsprodukte & Biochemikalien



Zellkultur & Verbrauchsmaterial



Diagnostik & molekulare Diagnostik



Laborgeräte & Service

Weitere Information auf den folgenden Seiten!  
See the following pages for more information!



### Lieferung & Zahlungsart

siehe unsere [Liefer- und Versandbedingungen](#)

### Zuschläge

- Mindermengenzuschlag
- Trockeneiszuschlag
- Gefahrgutzuschlag
- Expressversand

### SZABO-SCANDIC HandelsgmbH

Quellenstraße 110, A-1100 Wien

T. +43(0)1 489 3961-0

F. +43(0)1 489 3961-7

[mail@szabo-scandic.com](mailto:mail@szabo-scandic.com)

[www.szabo-scandic.com](http://www.szabo-scandic.com)

[linkedin.com/company/szaboscandic](https://www.linkedin.com/company/szaboscandic) 



## GTF2A2 MaxPab mouse polyclonal antibody (B02) MaxPab®

Catalog # : H00002958-B02

規格 : [ 50 uL ]

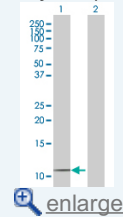
[List All](#)

### Specification

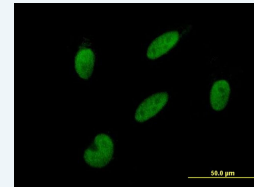
<b>Product Description:</b>	Mouse polyclonal antibody raised against a full-length human GTF2A2 protein.
<b>Immunogen:</b>	GTF2A2 (NP_004483.1, 1 a.a. ~ 109 a.a) full-length human protein.
<b>Sequence:</b>	MAYQLYRNTTLGNSLQESLDELISQSQITPQLALQVLLQFDKAINAALAQ RVRNRVNFGRSLNTYRFCDNWTFVLNDVEFREVTELIKVDKVKIVACD GKNTGSNTTE
<b>Host:</b>	Mouse
<b>Reactivity:</b>	Human
<b>Quality Control Testing:</b>	Antibody reactive against mammalian transfected lysate.
<b>Storage Buffer:</b>	No additive
<b>Storage Instruction:</b>	Store at -20°C or lower. Aliquot to avoid repeated freezing and thawing.
<b>Note:</b>	For IHC and IF applications, antibody purification with Protein A will be needed prior to use.
<b>MSDS:</b>	 <a href="#">Download</a>
<b>Datasheet:</b>	 <a href="#">Download</a>

### Application Image

Western Blot (Transfected lysate)

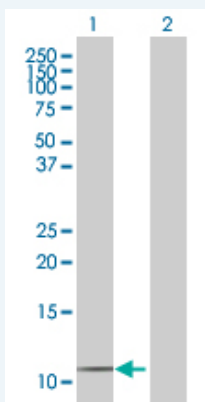


Immunofluorescence



### Applications

#### Western Blot (Transfected lysate)

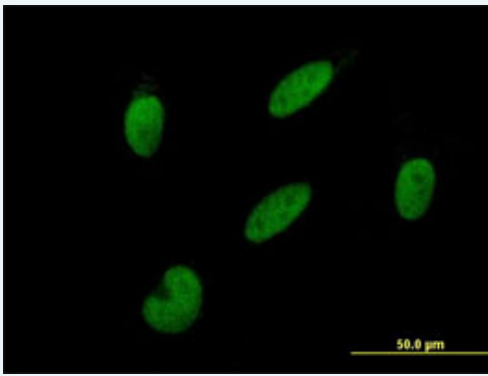


Western Blot analysis of GTF2A2 expression in transfected 293T cell line ([H00002958-T02](#)) by GTF2A2 MaxPab polyclonal antibody.

Lane 1: GTF2A2 transfected lysate(11.99 KDa).  
Lane 2: Non-transfected lysate.

 [Protocol Download](#)

#### Immunofluorescence



[enlarge this image](#)

Immunofluorescence of purified MaxPab antibody to GTF2A2 on HepG2 cell. [antibody concentration 10 ug/ml]

 [Protocol Download](#)

## Gene Information

**Entrez GeneID:** [2958](#)

**GeneBank Accession#:** [NM\\_004492.1](#)

**Protein Accession#:** [NP\\_004483.1](#)

**Gene Name:** GTF2A2

**Gene Alias:** HsT18745,TF2A2,TFIIA

**Gene Description:** general transcription factor IIA, 2, 12kDa

**Omim ID:** [600519](#)

**Gene Ontology:** [Hyperlink](#)

**Gene Summary:** Accurate transcription initiation on TATA-containing class II genes involves the ordered assembly of RNA polymerase II (POLR2A; MIM 180660) and the general initiation factors TFIIA, TFIIIB (MIM 189963), TFIIID (MIM 313650), TFIIIE (MIM 189962), TFIIIF (MIM 189968), TFIIIG/TFIIJ, and TFIIH (MIM 189972). The first step involves recognition of the TATA element by the TATA-binding subunit (TBP; MIM 600075) and may be regulated by TFIIA, a factor that interacts with both TBP and a TBP-associated factor (TAF; MIM 600475) in TFIIID. TFIIA has 2 subunits (43 and 12 kD) in yeast and 3 subunits in higher eukaryotes. In HeLa extracts, it consists of a 35-kD alpha subunit and a 19-kD beta subunit encoded by the N- and C-terminal regions of GTF2A1 (MIM 600520), respectively, and a 12-kD gamma subunit encoded by GTF2A2 (DeJong et al., 1995 [PubMed 7724559]).[supplied by OMIM

**Other Designations:** OTTHUMP00000196512,OTTHUMP00000196515,general transcription factor IIA, 2 (12kD subunit)

## Gene Pathway

[Basal transcription factors](#)