



# SZABO SCANDIC

Part of Europa Biosite

## Produktinformation



Forschungsprodukte & Biochemikalien



Zellkultur & Verbrauchsmaterial



Diagnostik & molekulare Diagnostik



Laborgeräte & Service

Weitere Information auf den folgenden Seiten!  
See the following pages for more information!



### Lieferung & Zahlungsart

siehe unsere [Liefer- und Versandbedingungen](#)

### Zuschläge

- Mindermengenzuschlag
- Trockeneiszuschlag
- Gefahrgutzuschlag
- Expressversand

### SZABO-SCANDIC HandelsgmbH

Quellenstraße 110, A-1100 Wien

T. +43(0)1 489 3961-0

F. +43(0)1 489 3961-7

[mail@szabo-scandic.com](mailto:mail@szabo-scandic.com)

[www.szabo-scandic.com](http://www.szabo-scandic.com)

[linkedin.com/company/szaboscandic](https://www.linkedin.com/company/szaboscandic) 

## GTF2A2 293T Cell Transient Overexpression Lysate(Denatured)

Catalog # : H00002958-T02

規格 : [ 100 uL ]

[List All](#)

### Specification

**Transfected Cell Line:** 293T

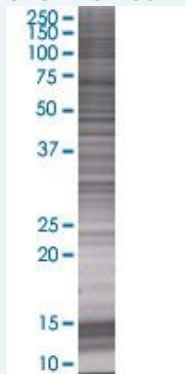
**Plasmid:** pCMV-GTF2A2 full-length

**Host:** Human

**Theoretical MW (kDa):** 12.1

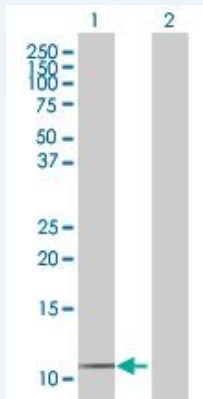
**Quality Control Testing:** Transient overexpression cell lysate was tested with Anti-GTF2A2 antibody (H00002958-B02) by Western Blots.

#### SDS-PAGE Gel



GTF2A2 transfected lysate.

#### Western Blot



Lane 1: GTF2A2 transfected lysate ( 12.1 KDa)

Lane 2: Non-transfected lysate.

**Storage Buffer:** 1X Sample Buffer (50 mM Tris-HCl, 2% SDS, 10% glycerol, 300 mM 2-mercaptoethanol, 0.01% Bromophenol blue)

**Storage Instruction:** Store at -80°C. Aliquot to avoid repeated freezing and thawing.

**MSDS:**  [Download](#)

### Applications

## Western Blot

### Gene Information

Entrez GeneID: [2958](#)

GeneBank [NM\\_004492.1](#)  
Accession#:

Protein [NP\\_004483.1](#)  
Accession#:

Gene Name: GTF2A2

Gene Alias: HsT18745,TF2A2,TFIIA

Gene Description: general transcription factor IIA, 2, 12kDa

Omim ID: [600519](#)

Gene Ontology: [Hyperlink](#)

**Gene Summary:** Accurate transcription initiation on TATA-containing class II genes involves the ordered assembly of RNA polymerase II (POLR2A; MIM 180660) and the general initiation factors TFIIA, TFIIIB (MIM 189963), TFIIID (MIM 313650), TFIIIE (MIM 189962), TFIIIF (MIM 189968), TFIIIG/TFIIJ, and TFIIH (MIM 189972). The first step involves recognition of the TATA element by the TATA-binding subunit (TBP; MIM 600075) and may be regulated by TFIIA, a factor that interacts with both TBP and a TBP-associated factor (TAF; MIM 600475) in TFIIID. TFIIA has 2 subunits (43 and 12 kD) in yeast and 3 subunits in higher eukaryotes. In HeLa extracts, it consists of a 35-kD alpha subunit and a 19-kD beta subunit encoded by the N- and C-terminal regions of GTF2A1 (MIM 600520), respectively, and a 12-kD gamma subunit encoded by GTF2A2 (DeJong et al., 1995 [PubMed 7724559]).[supplied by OMIM

Other Designations: OTTHUMP00000196512,OTTHUMP00000196515,general transcription factor IIA, 2 (12kD subunit)

### Gene Pathway

[Basal transcription factors](#)

[服務條款](#) | [隱私權政策](#) | [著作及商標](#) | [網站地圖](#)

©2016 亞諾法生技股份有限公司 Abnova Corporation. 版權所有.