



SZABO SCANDIC

Part of Europa Biosite

Produktinformation



Forschungsprodukte & Biochemikalien



Zellkultur & Verbrauchsmaterial



Diagnostik & molekulare Diagnostik



Laborgeräte & Service

Weitere Information auf den folgenden Seiten!
See the following pages for more information!



Lieferung & Zahlungsart

siehe unsere [Liefer- und Versandbedingungen](#)

Zuschläge

- Mindermengenzuschlag
- Trockeneiszuschlag
- Gefahrgutzuschlag
- Expressversand

SZABO-SCANDIC HandelsgmbH

Quellenstraße 110, A-1100 Wien

T. +43(0)1 489 3961-0

F. +43(0)1 489 3961-7

mail@szabo-scandic.com

www.szabo-scandic.com

[linkedin.com/company/szaboscandic](https://www.linkedin.com/company/szaboscandic) 

GTF2E1 MaxPab mouse polyclonal antibody (B01) MaxPab®

Catalog # : H00002960-B01

規格 : [50 uL]

[List All](#)

Specification

Product Description: Mouse polyclonal antibody raised against a full-length human GTF2E1 protein.

Immunogen: GTF2E1 (NP_005504.2, 1 a.a. ~ 439 a.a) full-length human protein.

Sequence:
 MADPDVLTEVPAALKRLAKYVIRGFYGIEHALDILIRNSCVKEEDMLELL
 KFDRKQLRSVLNNLKGDKFIKCRMRVETAADGKTRHNYFINYRTLNV
 VKYKLDHMRRIETDERDSTNRASFKCPVCSSTFTDLEANQLFDPMTGT
 FRCTFCHTEVEEDESAMPKKDARTLLARFNEQIEPIYALLRETEVDNLAY
 EILEPEPEIIPALKQSKDHAATTAGAASLAGGHHREAWATKGPSYEDLYT
 QNVVINMDDQEDLHRASLEGKSAKERPIWLRESTVQGAYGSEDMKEGGI
 DMDAFQEREEGHAGPDDNEEVMRALLIHEKKTSSAMAGSVGAAAPVTA
 ANGSDSESETSEDDDSPPRPAAVAVHKREDEEEDDEFEEVADDPIMV
 VAGRPFYSYEVSRPELVAQMTPEEKEAYIAMGQRMFEDLFE

Host: Mouse

Reactivity: Human

Quality Control Testing: Antibody reactive against mammalian transfected lysate.

Storage Buffer: No additive

Storage Instruction: Store at -20°C or lower. Aliquot to avoid repeated freezing and thawing.

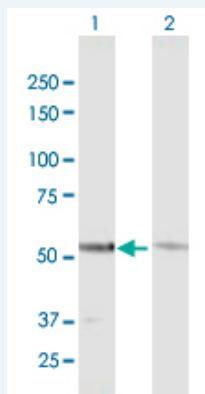
Note: For IHC and IF applications, antibody purification with Protein A will be needed prior to use.

MSDS:  [Download](#)

Datasheet:  [Download](#)

Applications

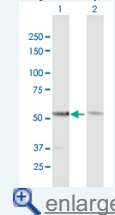
Western Blot (Transfected lysate)



Western Blot analysis of GTF2E1 expression in transfected 293T cell line (H00002960-T01) by GTF2E1 MaxPab polyclonal antibody.

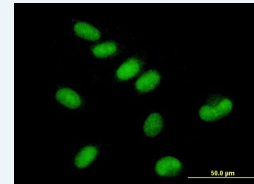
Application Image

Western Blot (Transfected lysate)



 [enlarge](#)

Immunofluorescence

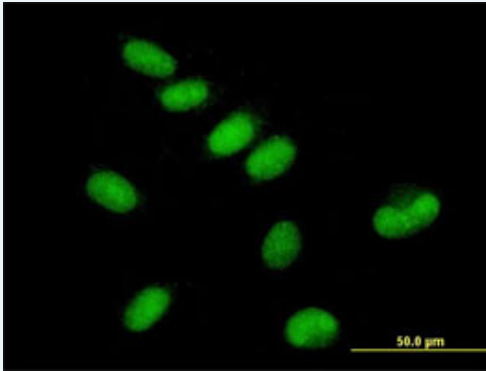


 [enlarge](#)

Lane 1: GTF2E1 transfected lysate(48.29 KDa).
Lane 2: Non-transfected lysate.

 [Protocol Download](#)

Immunofluorescence



 [enlarge this image](#)

Immunofluorescence of purified MaxPab antibody to GTF2E1 on HepG2 cell. [antibody concentration 10 ug/ml]

 [Protocol Download](#)

Gene Information

Entrez GeneID: [2960](#)

GeneBank [NM_005513.1](#)
Accession#:

Protein [NP_005504.2](#)
Accession#:

Gene Name: GTF2E1

Gene Alias: FE,TF2E1,TFIIE-A

Gene Description: general transcription factor IIE, polypeptide 1, alpha 56kDa

Omim ID: [189962](#)

Gene Ontology: [Hyperlink](#)

Other Designations: general transcription factor IIE, polypeptide 1 (alpha subunit, 56kD)

Gene Pathway

[Basal transcription factors](#)

Related Disease

Breast cancer [Breast Neoplasms](#) [Genetic Predisposition to Disease](#)