



SZABO SCANDIC

Part of Europa Biosite

Produktinformation



Forschungsprodukte & Biochemikalien



Zellkultur & Verbrauchsmaterial



Diagnostik & molekulare Diagnostik



Laborgeräte & Service

Weitere Information auf den folgenden Seiten!
See the following pages for more information!



Lieferung & Zahlungsart

siehe unsere [Liefer- und Versandbedingungen](#)

Zuschläge

- Mindermengenzuschlag
- Trockeneiszuschlag
- Gefahrgutzuschlag
- Expressversand

SZABO-SCANDIC HandelsgmbH

Quellenstraße 110, A-1100 Wien

T. +43(0)1 489 3961-0

F. +43(0)1 489 3961-7

mail@szabo-scandic.com

www.szabo-scandic.com

[linkedin.com/company/szaboscandic](https://www.linkedin.com/company/szaboscandic) 

GTF2E2 monoclonal antibody (M01), clone 2C3

Catalog # : H00002961-M01

規格 : [50 ug]

[List All](#)

Specification

Product Description: Mouse monoclonal antibody raised against a full length recombinant GTF2E2.

Immunogen: GTF2E2 (AAH30572, 1 a.a. ~ 291 a.a) full-length recombinant protein with GST tag. MW of the GST tag alone is 26 KDa.

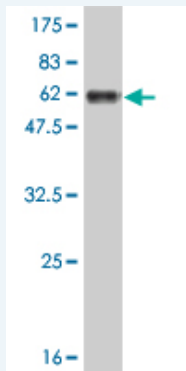
Sequence: MDPSLLRERELFKKRALSTPVVEKRSASSESSSSSSKSKKTKVEHGGSS
GSKQNSDHSNGSFNLKALSGSSGYKFGVLAKIVNYMKTRHQRGDTHPLT
LDEILDQTHLDIGLKQKQWLMTEALVNNPKIEVIDGKYAFKPKYNVRDCK
ALLRLLDQHDQRGLGGILLEDIEEALPNSQKAVKALGDQILFVNRPDKKKI
LFFNDKSCQFSVDEEFQKLWRSVTVDSMDEEKIEEYLKRQGISSMQESG
PKKVAPIQRRKKPASQKKRRFKTHNEHLAGVLKDYSITSSK

Host: Mouse

Reactivity: Human

Isotype: IgG1 Kappa

Quality Control Testing: Antibody Reactive Against Recombinant Protein.



Western Blot detection against Immunogen (57.75 KDa) .

Storage Buffer: In 1x PBS, pH 7.4

Storage Instruction: Store at -20°C or lower. Aliquot to avoid repeated freezing and thawing.

MSDS: [Download](#)

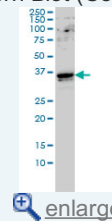
Datasheet: [Download](#)

Applications

Western Blot (Cell lysate)

Application Image

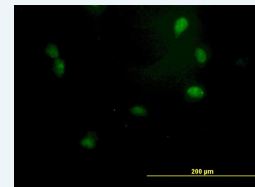
Western Blot (Cell lysate)



[enlarge](#)

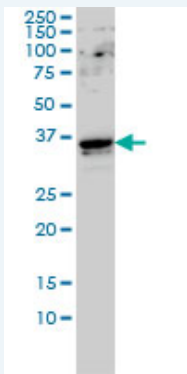
Western Blot (Recombinant protein)

Immunofluorescence



[enlarge](#)

ELISA



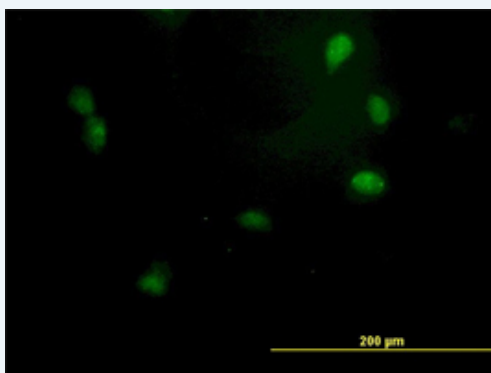
GTF2E2 monoclonal antibody (M01), clone 2C3 Western Blot analysis of GTF2E2 expression in HeLa S3 NE (Cat # L013V3).

[Protocol Download](#)

Western Blot (Recombinant protein)

[Protocol Download](#)

Immunofluorescence



[enlarge this image](#)

Immunofluorescence of monoclonal antibody to GTF2E2 on HeLa cell. [antibody concentration 40 ug/ml]

[Protocol Download](#)

ELISA

Gene Information

Entrez GeneID: [2961](#)

GeneBank [BC030572](#)
Accession#:

Protein [AAH30572](#)
Accession#:

Gene Name: GTF2E2

Gene Alias: FE,TF2E2,TFIIE-B

Gene Description: general transcription factor IIE, polypeptide 2, beta 34kDa

Omim ID: [189964](#)

Gene Ontology: [Hyperlink](#)

Other Designations: general transcription factor IIE, polypeptide 2 (beta subunit, 34kD)

Gene Pathway

[Basal transcription factors](#)

Related Disease

[Colitis, Ulcerative](#) [Genetic Predisposition to Disease](#)

[服務條款](#) | [隱私權政策](#) | [著作及商標](#) | [網站地圖](#)

©2016 亞諾法生技股份有限公司 Abnova Corporation. 版權所有.