



SZABO SCANDIC

Part of Europa Biosite

Produktinformation



Forschungsprodukte & Biochemikalien



Zellkultur & Verbrauchsmaterial



Diagnostik & molekulare Diagnostik



Laborgeräte & Service

Weitere Information auf den folgenden Seiten!
See the following pages for more information!



Lieferung & Zahlungsart

siehe unsere [Liefer- und Versandbedingungen](#)

Zuschläge

- Mindermengenzuschlag
- Trockeneiszuschlag
- Gefahrgutzuschlag
- Expressversand

SZABO-SCANDIC HandelsgmbH

Quellenstraße 110, A-1100 Wien

T. +43(0)1 489 3961-0

F. +43(0)1 489 3961-7

mail@szabo-scandic.com

www.szabo-scandic.com

[linkedin.com/company/szaboscandic](https://www.linkedin.com/company/szaboscandic) 

GTF2F1 purified MaxPab mouse polyclonal antibody (B01P) MaxPab®

Catalog # : H00002962-B01P

規格 : [50 ug]

[List All](#)

Specification

Product Description: Mouse polyclonal antibody raised against a full-length human GTF2F1 protein.

Immunogen: GTF2F1 (AAH00120.1, 1 a.a. ~ 517 a.a) full-length human protein.

Sequence:
 MAALGPSSQNVTEYVVRVPKNTTKKYNIMAFNAADKVN FATWNQARLER
 DLSNKKIYQEEEMPESGAGSEFNRLREEARRKKYGIVLKEFRPEDQPW
 LLRVNGKSGRKFKGIIKGGVTENTSYIF TQCPDGAFAFPVHNWYNFT
 PLARHRTLTAEEAEEEWERRNKVLNHF SIMQQRRLKDQDQDEDEEKE
 KRGRRKASELRIHDLEDDLEMSSDASDASGEEGGRVPAKAKKAPLAKG
 GRKKKKKKKGSDDAEFEDSDDGDFEGQEVDMSDGSSSSQEEPEKAK
 APQQEEGPKGVDEQSDSSESEEEEEKPEEDKEEEEEKAPT PQEKRR
 KDSSEESDSSEESDIDSEASSALFMAKKKTPPKRERKPSGGSSRGNSRP
 GTPSAEGGSTSSTLRAAASKLEQGKRVSEMPAAKRLRLDTGPQSLSGK
 STPQQPSGKTPNSGDVQVTEDAVRRYLTRKPMTTKDLLKKFQTKKTG
 LSSEQTVNVLAQILKRLNPERKMINDKMHFSLKE

Host: Mouse

Reactivity: Human

Quality Control Testing: Antibody reactive against mammalian transfected lysate.

Storage Buffer: In 1x PBS, pH 7.4

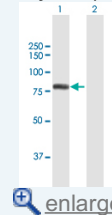
Storage Instruction: Store at -20°C or lower. Aliquot to avoid repeated freezing and thawing.

MSDS: [Download](#)

Datasheet: [Download](#)

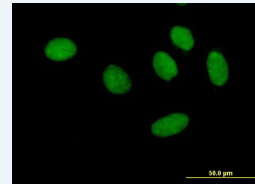
Application Image

Western Blot (Transfected lysate)



[enlarge](#)

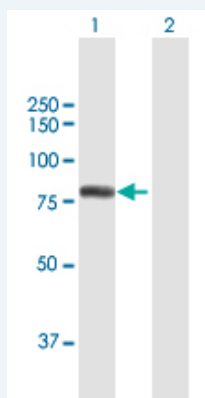
Immunofluorescence



[enlarge](#)

Applications

Western Blot (Transfected lysate)



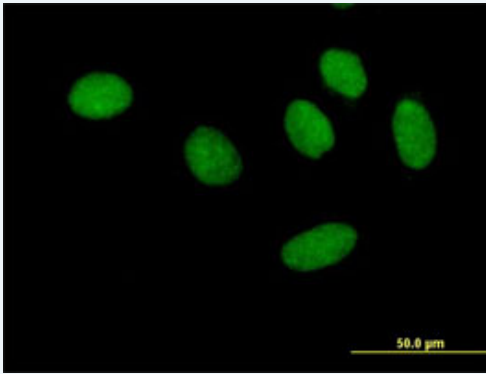
Western Blot analysis of GTF2F1 expression in transfected 293T cell line (H00002962-T01) by GTF2F1 MaxPab polyclonal antibody.

Lane1:GTF2F1 transfected lysate(56.87 KDa).

Lane2:Non-transfected lysate.

 [Protocol Download](#)

Immunofluorescence



 [enlarge this image](#)

Immunofluorescence of purified MaxPab antibody to GTF2F1 on HeLa cell. [antibody concentration 10 ug/ml]

 [Protocol Download](#)

Gene Information

Entrez GeneID: [2962](#)

GeneBank Accession#: [BC000120.1](#)

Protein Accession#: [AAH00120.1](#)

Gene Name: GTF2F1

Gene Alias: BTF4,RAP74,TF2F1,TFIIF

Gene Description: general transcription factor IIF, polypeptide 1, 74kDa

Omim ID: [189968](#)

Gene Ontology: [Hyperlink](#)

Other Designations: general transcription factor IIF, polypeptide 1 (74kD subunit)

Gene Pathway

[Basal transcription factors](#)

Related Disease

Breast cancer [Breast Neoplasms](#) [Genetic Predisposition to Disease](#)

[服務條款](#) | [隱私權政策](#) | [著作及商標](#) | [網站地圖](#)

©2016 亞諾法生技股份有限公司 Abnova Corporation. 版權所有.