



# SZABO SCANDIC

Part of Europa Biosite

## Produktinformation



Forschungsprodukte & Biochemikalien



Zellkultur & Verbrauchsmaterial



Diagnostik & molekulare Diagnostik



Laborgeräte & Service

Weitere Information auf den folgenden Seiten!  
See the following pages for more information!



### Lieferung & Zahlungsart

siehe unsere [Liefer- und Versandbedingungen](#)

### Zuschläge

- Mindermengenzuschlag
- Trockeneiszuschlag
- Gefahrgutzuschlag
- Expressversand

### SZABO-SCANDIC HandelsgmbH

Quellenstraße 110, A-1100 Wien

T. +43(0)1 489 3961-0

F. +43(0)1 489 3961-7

[mail@szabo-scandic.com](mailto:mail@szabo-scandic.com)

[www.szabo-scandic.com](http://www.szabo-scandic.com)

[linkedin.com/company/szaboscandic](https://www.linkedin.com/company/szaboscandic) 

## GTF2F2 purified MaxPab rabbit polyclonal antibody (D01P) MaxPab®

Catalog # : H00002963-D01P

規格 : [ 100 ug ]

[List All](#)

### Specification

**Product Description:** Rabbit polyclonal antibody raised against a full-length human GTF2F2 protein.

**Immunogen:** GTF2F2 (AAH01771.1, 1 a.a. ~ 249 a.a) full-length human protein.

**Sequence:**  
 MAERGELDLTGAKQNTGVWLKVPKYLSSQWAKASGRGEVGLRIAKT  
 QGRTEVSFTLNEDLANIHDIGGKSPASVSAPREHPFVLQSVGGQTLTVFTE  
 SSSDKLSLEGIVQRAECPAASENYMRLKRLQIESSKPVRLSQQLDKV  
 VTTNYPVANHQYNIERYERKKKEGGKRARADKQHVLDMLFSAFEKHQYY  
 NLKDLVDITKQPVVYLKEILKEIGVQNVKGIHKNTWELKPEYRHYQGEEKS  
 D

**Host:** Rabbit

**Reactivity:** Human

**Quality Control Testing:** Antibody reactive against mammalian transfected lysate.

**Storage Buffer:** In 1x PBS, pH 7.4

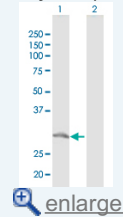
**Storage Instruction:** Store at -20°C or lower. Aliquot to avoid repeated freezing and thawing.


**MSDS:**  [Download](#)

**Datasheet:**  [Download](#)

### Application Image

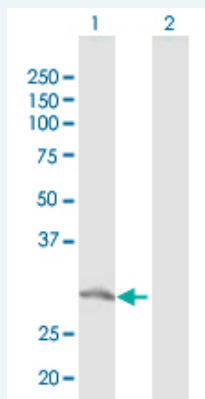
Western Blot (Transfected lysate)



 [enlarge](#)


### Applications

Western Blot (Transfected lysate)



Western Blot analysis of GTF2F2 expression in transfected 293T cell line ( ) by GTF2F2 MaxPab polyclonal antibody.

Lane 1: GTF2F2 transfected lysate(27.50 KDa).  
 Lane 2: Non-transfected lysate.

 [Protocol Download](#)

### Gene Information

Entrez GeneID: [2963](#)

GeneBank  
Accession#: [BC001771.1](#)

Protein  
Accession#: [AAH01771.1](#)

Gene Name: GTF2F2

Gene Alias: BTF4,RAP30,TF2F2,TFIIF

Gene  
Description: general transcription factor IIF, polypeptide 2, 30kDa

Omim ID: [189969](#)

Gene Ontology: [Hyperlink](#)

Other  
Designations: general transcription factor IIF, polypeptide 1 (74kD subunit),general  
transcription factor IIF, polypeptide 2 (30kD subunit)

#### Gene Pathway

[Basal transcription factors](#)

[服務條款](#) | [隱私權政策](#) | [著作及商標](#) | [網站地圖](#)

©2016 亞諾法生技股份有限公司 Abnova Corporation. 版權所有.