



SZABO SCANDIC

Part of Europa Biosite

Produktinformation



Forschungsprodukte & Biochemikalien



Zellkultur & Verbrauchsmaterial



Diagnostik & molekulare Diagnostik



Laborgeräte & Service

Weitere Information auf den folgenden Seiten!
See the following pages for more information!



Lieferung & Zahlungsart

siehe unsere [Liefer- und Versandbedingungen](#)

Zuschläge

- Mindermengenzuschlag
- Trockeneiszuschlag
- Gefahrgutzuschlag
- Expressversand

SZABO-SCANDIC HandelsgmbH

Quellenstraße 110, A-1100 Wien

T. +43(0)1 489 3961-0

F. +43(0)1 489 3961-7

mail@szabo-scandic.com

www.szabo-scandic.com

[linkedin.com/company/szaboscandic](https://www.linkedin.com/company/szaboscandic)

GTF2H1 polyclonal antibody (A01)

Catalog # : H00002965-A01

規格 : [50 uL]

List All

Specification

Product Description: Mouse polyclonal antibody raised against a partial recombinant GTF2H1.

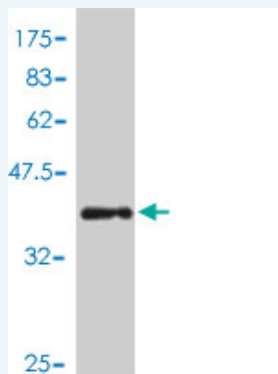
Immunogen: GTF2H1 (NP_005307, 449 a.a. ~ 548 a.a) partial recombinant protein with GST tag.

Sequence: INQMVPNDIQSELKHLVAVGELLRHFWSFCFPVNTPFLEEKVVKMKSNIERFQVTKLCPFQEKIRRQYLSTNLVSHIEEMLQTAYNKLHTWQSRRLMKKT

Host: Mouse

Reactivity: Human

Quality Control Testing: Antibody Reactive Against Recombinant Protein.



Western Blot detection against Immunogen (37.11 kDa) .

Storage Buffer: 50 % glycerol

Storage Instruction: Store at -20°C or lower. Aliquot to avoid repeated freezing and thawing.

MSDS: [Download](#)

Datasheet: [Download](#)

Applications

Western Blot (Recombinant protein)

[Protocol Download](#)

ELISA

Gene Information

Entrez GeneID: [2965](#)

GeneBank Accession#: [NM_005316](#)

Application Image

Western Blot (Recombinant protein)

ELISA

Protein Accession#: [NP_005307](#)

Gene Name: GTF2H1

Gene Alias: BTF2,TFB1,TFIIH

Gene Description: general transcription factor IIH, polypeptide 1, 62kDa

Omim ID: [189972](#)

Gene Ontology: [Hyperlink](#)

Other Designations: general transcription factor IIH, polypeptide 1 (62kD subunit)

Gene Pathway

[Basal transcription factors](#) [Nucleotide excision repair](#)

Related Disease

[Breast cancer](#) [Genetic Predisposition to Disease](#) [Kidney Failure, Chronic](#) [Lung Neoplasms](#) [Meningeal Neoplasms](#) [Meningioma](#) [Multiple Sclerosis](#) [Narcolepsy](#) [Werner syndrome](#)

[服務條款](#) | [隱私權政策](#) | [著作及商標](#) | [網站地圖](#)

©2016 亞諾法生技股份有限公司 Abnova Corporation. 版權所有.