



SZABO SCANDIC

Part of Europa Biosite

Produktinformation



Forschungsprodukte & Biochemikalien



Zellkultur & Verbrauchsmaterial



Diagnostik & molekulare Diagnostik



Laborgeräte & Service

Weitere Information auf den folgenden Seiten!
See the following pages for more information!



Lieferung & Zahlungsart

siehe unsere [Liefer- und Versandbedingungen](#)

Zuschläge

- Mindermengenzuschlag
- Trockeneiszuschlag
- Gefahrgutzuschlag
- Expressversand

SZABO-SCANDIC HandelsgmbH

Quellenstraße 110, A-1100 Wien

T. +43(0)1 489 3961-0

F. +43(0)1 489 3961-7

mail@szabo-scandic.com

www.szabo-scandic.com

[linkedin.com/company/szaboscandic](https://www.linkedin.com/company/szaboscandic) 

GTF2H1 monoclonal antibody (M01), clone 1F12-1B5

Catalog # : H00002965-M01

規格 : [100 ug]

List All

Specification

Product Description: Mouse monoclonal antibody raised against a full length recombinant GTF2H1.

Immunogen: GTF2H1 (AAH00365, 1 a.a. ~ 548 a.a) full-length recombinant protein with GST tag. MW of the GST tag alone is 26 KDa.

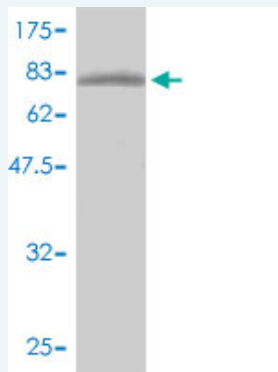
Sequence: MATSSEEVLLIVKKVRQKKQDGALYLMAERIAWAPEGKDRFTISHMYADIKCQKISPEGKAKIQLQLVLHAGDTTNFHF SNESTAVKERDAVKDLLQQLLPKFKRKANKLEEKNRMLQEDPVLFLYKDLVVSQVISAEWFANRLNVNATDSSSTSNHKQDVGISAFLADV RPQTDGCNGLRYNLTSDIIESIFRTYPAVKMKYAENVPHNMTEKEFWTRFFQSHYFHRDRLNTGSKDLFAECAKIDKGLKTMVSLGVKNPLLDLTALEDKPLDEGYGISSVPSASNSKSIKENSNAIIRKFNHHSAMVLAAGLRKQEAQNEQTSEPSNMDGNSGDADCFQPAVKRAKLQESIEYEDLGKNNVKTIALNLKKS DRYHGGPTPIQSLQYATSQDII NSFSIRQEMEAYTPKLTQVLS SSSAASSTITALSPGGALMQGGTQQAINQMVPNDIQSELKHLVAVGELLRHFWSFCFPVNTPFLEEKVVKMKS NLERFQVTKLCPFQEKIRRQYLSTNLVSHIEEMLQTAYNKLHTWQSRRLMKKT

Host: Mouse

Reactivity: Human

Isotype: IgG1 kappa

Quality Control Testing: Antibody Reactive Against Recombinant Protein.



Western Blot detection against Immunogen (86.02 KDa) .

Storage Buffer: In 1x PBS, pH 7.4

Storage Instruction: Store at -20°C or lower. Aliquot to avoid repeated freezing and thawing.

MSDS: [Download](#)

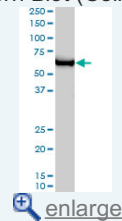
Datasheet: [Download](#)

Publication Reference

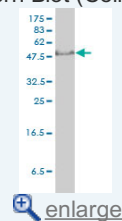
1. XPB induces C1D expression to counteract UV-induced apoptosis.
Li G, Liu J, Abu-Asab M, Masabumi S, Maru Y. Mol Cancer Res. 2010 Jun;8(6):885-95. Epub 2010 Jun 8.

Application Image

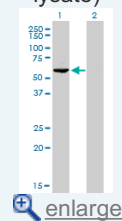
Western Blot (Cell lysate)



Western Blot (Cell lysate)

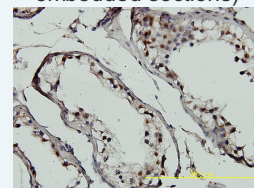


Western Blot (Transfected lysate)



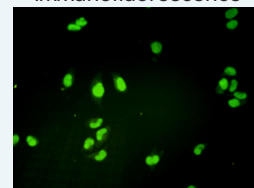
Western Blot (Recombinant protein)

Immunohistochemistry (Formalin/PFA-fixed paraffin-embedded sections)



[enlarge](#)

Immunofluorescence

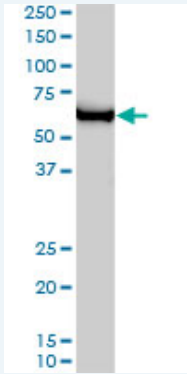


[enlarge](#)

Sandwich ELISA (Recombinant protein)

Applications

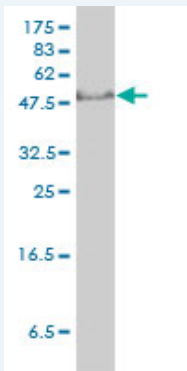
Western Blot (Cell lysate)



GTF2H1 monoclonal antibody (M01), clone 1F12-1B5. Western Blot analysis of GTF2H1 expression in HeLa S3 NE (Cat # L013V3).

 [Protocol Download](#)

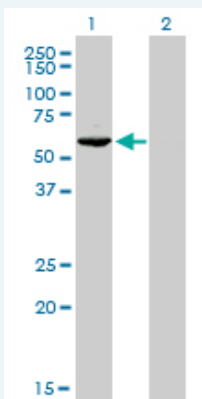
Western Blot (Cell lysate)



GTF2H1 monoclonal antibody (M01), clone 1F12-1B5 Western Blot analysis of GTF2H1 expression in Jurkat (Cat # L017V1).

 [Protocol Download](#)


Western Blot (Transfected lysate)



Western Blot analysis of GTF2H1 expression in transfected 293T cell line by GTF2H1 monoclonal antibody (M01), clone 1F12-1B5.

Lane 1: GTF2H1 transfected lysate(62 kDa).

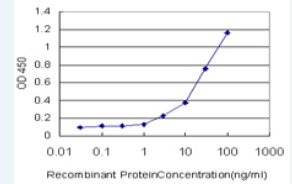
Lane 2: Non-transfected lysate.


 [Protocol Download](#)

Western Blot (Recombinant protein)

 [Protocol Download](#)

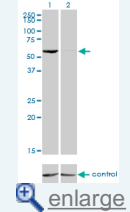
Immunohistochemistry (Formalin/PFA-fixed paraffin-embedded sections)




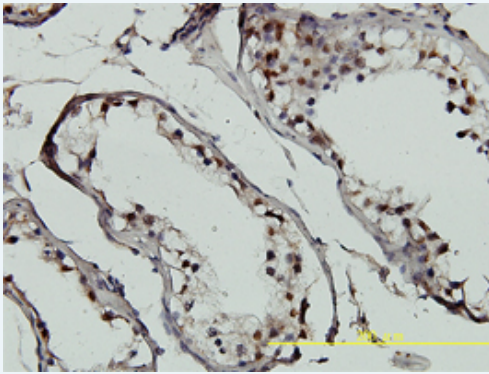
 [enlarge](#)

ELISA

RNAi Knockdown (Antibody validated)



 [enlarge](#)

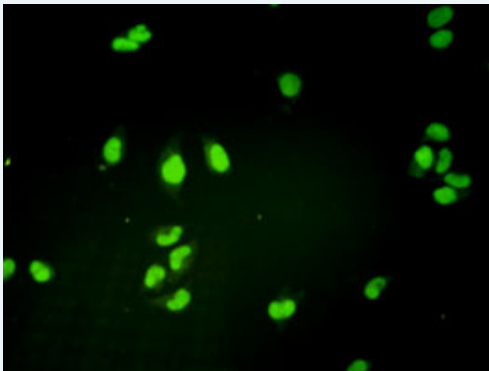


[enlarge this image](#)

Immunoperoxidase of monoclonal antibody to GTF2H1 on formalin-fixed paraffin-embedded human testis tissue.[antibody concentration 5 ug/ml]

[Protocol Download](#)

Immunofluorescence

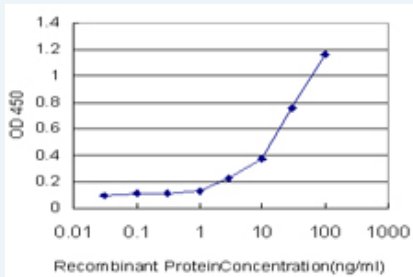


[enlarge this image](#)

Immunofluorescence of monoclonal antibody to GTF2H1 on HeLa cell. [antibody concentration 10 ug/ml]

[Protocol Download](#)

Sandwich ELISA (Recombinant protein)

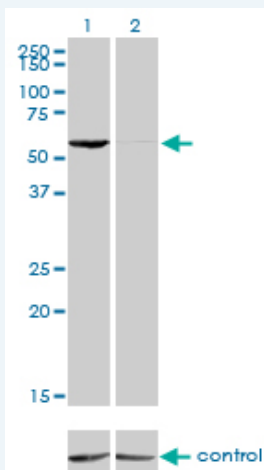


Detection limit for recombinant GST tagged GTF2H1 is approximately 1ng/ml as a capture antibody.

[Protocol Download](#)

ELISA

RNAi Knockdown (Antibody validated)



Western blot analysis of GTF2H1 over-expressed 293 cell line, cotransfected with GTF2H1 Validated Chimera RNAi (Cat # H00002965-R01V) (Lane 2) or non-transfected control (Lane 1). Blot probed with GTF2H1 monoclonal antibody (M01), clone 1F12-1B5 (Cat # H00002965-M01). GAPDH (36.1 kDa) used as specificity and loading control.

 [Protocol Download](#)

Gene Information

Entrez GeneID: [2965](#)

GeneBank Accession#: [BC000365](#)

Protein Accession#: [AAH00365](#)

Gene Name: GTF2H1

Gene Alias: BTF2,TFB1,TFIIH

Gene Description: general transcription factor IIH, polypeptide 1, 62kDa

Omim ID: [189972](#)

Gene Ontology: [Hyperlink](#)

Other Designations: general transcription factor IIH, polypeptide 1 (62kD subunit)

Gene Pathway

[Basal transcription factors](#) [Nucleotide excision repair](#)

Related Disease

[Breast cancer](#) [Genetic Predisposition to Disease](#) [Kidney Failure, Chronic](#) [Lung Neoplasms](#) [Meningeal Neoplasms](#) [Meningioma](#) [Multiple Sclerosis](#) [Narcolepsy](#) [Werner syndrome](#)