



SZABO SCANDIC

Part of Europa Biosite

Produktinformation



Forschungsprodukte & Biochemikalien



Zellkultur & Verbrauchsmaterial



Diagnostik & molekulare Diagnostik



Laborgeräte & Service

Weitere Information auf den folgenden Seiten!
See the following pages for more information!



Lieferung & Zahlungsart

siehe unsere [Liefer- und Versandbedingungen](#)

Zuschläge

- Mindermengenzuschlag
- Trockeneiszuschlag
- Gefahrgutzuschlag
- Expressversand

SZABO-SCANDIC HandelsgmbH

Quellenstraße 110, A-1100 Wien

T. +43(0)1 489 3961-0

F. +43(0)1 489 3961-7

mail@szabo-scandic.com

www.szabo-scandic.com

[linkedin.com/company/szaboscandic](https://www.linkedin.com/company/szaboscandic) 



GTF2H1 monoclonal antibody (M02), clone 4B9

Catalog # : H00002965-M02

規格 : [100 ug]

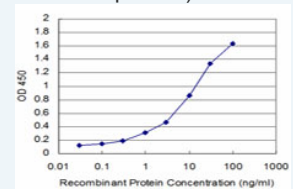
[List All](#)


Specification

Product Description:	Mouse monoclonal antibody raised against a partial recombinant GTF2H1.
Immunogen:	GTF2H1 (NP_005307, 449 a.a. ~ 548 a.a) partial recombinant protein with GST tag. MW of the GST tag alone is 26 KDa.
Sequence:	INQMVPNDIQSELKHLVAVGELLRHFWSFCFPVNTPFLEEKVVKMKSNIERFQVTKLCPFQEKIRRQYLSTNLVSHIEMLQTAYNKLHTWQSRRLMKKT
Host:	Mouse
Reactivity:	Human
Isotype:	IgG2a kappa
Quality Control Testing:	Antibody Reactive Against Recombinant Protein.
Storage Buffer:	In 1x PBS, pH 7.4
Storage Instruction:	Store at -20°C or lower. Aliquot to avoid repeated freezing and thawing.
MSDS:	 Download
Datasheet:	 Download

Application Image

Sandwich ELISA (Recombinant protein)

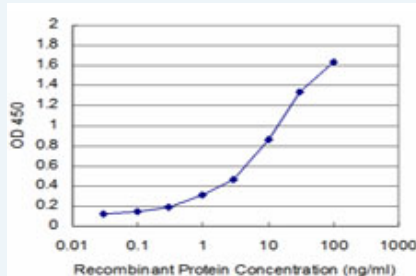


 [enlarge](#)


ELISA

Applications

Sandwich ELISA (Recombinant protein)



Detection limit for recombinant GST tagged GTF2H1 is approximately 0.1 ng/ml as a capture antibody.

 [Protocol Download](#)

ELISA

Gene Information

Entrez GeneID: [2965](#)

GeneBank [NM_005316](#)

Accession#:

Protein [NP_005307](#)

Accession#:

Gene Name: GTF2H1

Gene Alias: BTF2,TFB1,TFIIH

Gene Description: general transcription factor IIH, polypeptide 1, 62kDa

Omim ID: [189972](#)

Gene Ontology: [Hyperlink](#)

Other Designations: general transcription factor IIH, polypeptide 1 (62kD subunit)

Gene Pathway

[Basal transcription factors](#) [Nucleotide excision repair](#)

Related Disease

[Breast cancer](#) [Genetic Predisposition to Disease](#) [Kidney Failure](#) [Chronic Lung Neoplasms](#)
[Meningeal Neoplasms](#) [Meningioma](#) [Multiple Sclerosis](#) [Narcolepsy](#) [Werner syndrome](#)