



SZABO SCANDIC

Part of Europa Biosite

Produktinformation



Forschungsprodukte & Biochemikalien



Zellkultur & Verbrauchsmaterial



Diagnostik & molekulare Diagnostik



Laborgeräte & Service

Weitere Information auf den folgenden Seiten!
See the following pages for more information!



Lieferung & Zahlungsart

siehe unsere [Liefer- und Versandbedingungen](#)

Zuschläge

- Mindermengenzuschlag
- Trockeneiszuschlag
- Gefahrgutzuschlag
- Expressversand

SZABO-SCANDIC HandelsgmbH

Quellenstraße 110, A-1100 Wien

T. +43(0)1 489 3961-0

F. +43(0)1 489 3961-7

mail@szabo-scandic.com

www.szabo-scandic.com

[linkedin.com/company/szaboscandic](https://www.linkedin.com/company/szaboscandic) 

GTF2H2 MaxPab mouse polyclonal antibody (B01) MaxPab®

Catalog # : H00002966-B01

規格 : [50 uL]

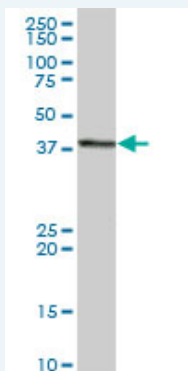
[List All](#)

Specification

Product Description:	Mouse polyclonal antibody raised against a full-length human GTF2H2 protein.
Immunogen:	GTF2H2 (NP_001506.1, 1 a.a. ~ 395 a.a) full-length human protein.
Sequence:	MDEEPERTKRWEGGYERTWEILKEDESGSLKATIEDILFKAKRKRVEHH GQVRLGMMRHLVWVDGSRMEDQDLKPNRLCTLKLLLEYFVEEYFDQ NPISQIGIIVTKSKRAEKLTELSGNPRKHITSLKKAVDMTCHGEPSTYNSLSI AMQTLKHMPGHTSREVLIIIFSSLTTCDPSNYYDLIKTLKAAKIRVSVIGLSAE VRVCTVLARETGGTYHVILDESHYKELLTHHVSPPPASSSECSLIRMGF PQHTIASLSDQDAKPSFSMAHLDGNTPEPLTLGGYFCPQCRAKYCELPEV ECKICGLTLVSAPHLARSYHHLFPLDAFQEIPLEEYNGERFCYGCQGELK DQHVVYCAVCQNVFCVDCDVFVHDSLHCCPGCIHKIPAPSGV
Host:	Mouse
Reactivity:	Human
Quality Control Testing:	Antibody reactive against mammalian transfected lysate.
Storage Buffer:	No additive
Storage Instruction:	Store at -20°C or lower. Aliquot to avoid repeated freezing and thawing.
Note:	For IHC and IF applications, antibody purification with Protein A will be needed prior to use.
MSDS:	Download
Datasheet:	Download

Applications

Western Blot (Tissue lysate)

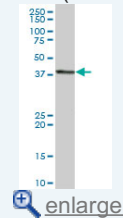


GTF2H2 MaxPab polyclonal antibody. Western Blot analysis of GTF2H2 expression in human pancreas.

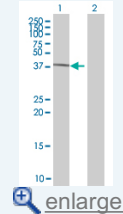
[Protocol Download](#)

Application Image

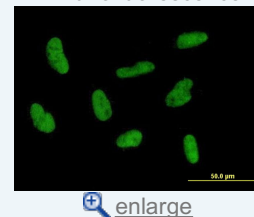
Western Blot (Tissue lysate)



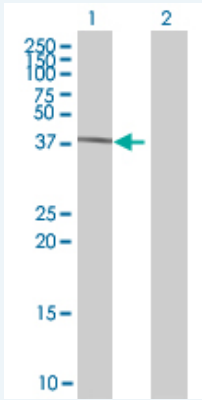
Western Blot (Transfected lysate)



Immunofluorescence



Western Blot (Transfected lysate)



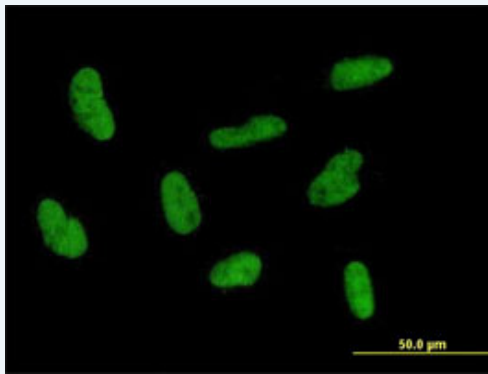
Western Blot analysis of GTF2H2 expression in transfected 293T cell line ([H00002966-T01](#)) by GTF2H2 MaxPab polyclonal antibody.

Lane 1: GTF2H2 transfected lysate(43.45 KDa).

Lane 2: Non-transfected lysate.

[Protocol Download](#)

Immunofluorescence



enlarge this image

Immunofluorescence of purified MaxPab antibody to GTF2H2 on HepG2 cell. [antibody concentration 10 ug/ml]

[Protocol Download](#)

Gene Information

Entrez GeneID: [2966](#)

GeneBank [NM_001515.2](#)

Accession#:

Protein [NP_001506.1](#)

Accession#:

Gene Name: GTF2H2

Gene Alias: BTF2,BTF2P44,MGC102806,T-BTF2P44,TFIIH

Gene Description: general transcription factor IIH, polypeptide 2, 44kDa

Description:

Omim ID: [601748](#)

Gene Ontology: [Hyperlink](#)

Gene Summary: This gene is part of a 500 kb inverted duplication on chromosome 5q13. This duplicated region contains at least four genes and repetitive elements which make it prone to rearrangements and deletions. The repetitiveness and complexity of the sequence have also caused difficulty in determining the organization of this genomic region. This gene is within the telomeric copy of the duplication. Deletion of this gene sometimes accompanies deletion of the neighboring SMN1 gene in

spinal muscular atrophy (SMA) patients but it is unclear if deletion of this gene contributes to the SMA phenotype. This gene encodes the 44 kDa subunit of RNA polymerase II transcription initiation factor IIH which is involved in basal transcription and nucleotide excision repair. Transcript variants for this gene have been described, but their full length nature has not been determined. A second copy of this gene within the centromeric copy of the duplication has been described in the literature. It is reported to be different by either two or four base pairs; however, no sequence data is currently available for the centromeric copy of the gene. [provided by RefSeq

Other Designations: general transcription factor IIH, polypeptide 2 (44kD subunit), general transcription factor IIH, polypeptide 2, 44kD subunit

Gene Pathway

[Basal transcription factors](#) [Nucleotide excision repair](#)

Related Disease

[Spinal Muscular Atrophies of Childhood](#) [Spinal muscular atrophy](#)

[服務條款](#) | [隱私權政策](#) | [著作及商標](#) | [網站地圖](#)

©2016 亞諾法生技股份有限公司 Abnova Corporation. 版權所有.