



# SZABO SCANDIC

Part of Europa Biosite

## Produktinformation



Forschungsprodukte & Biochemikalien



Zellkultur & Verbrauchsmaterial



Diagnostik & molekulare Diagnostik



Laborgeräte & Service

Weitere Information auf den folgenden Seiten!  
See the following pages for more information!



### Lieferung & Zahlungsart

siehe unsere [Liefer- und Versandbedingungen](#)

### Zuschläge

- Mindermengenzuschlag
- Trockeneiszuschlag
- Gefahrgutzuschlag
- Expressversand

### SZABO-SCANDIC HandelsgmbH

Quellenstraße 110, A-1100 Wien

T. +43(0)1 489 3961-0

F. +43(0)1 489 3961-7

[mail@szabo-scandic.com](mailto:mail@szabo-scandic.com)

[www.szabo-scandic.com](http://www.szabo-scandic.com)

[linkedin.com/company/szaboscandic](https://www.linkedin.com/company/szaboscandic) 

## GTF2H2 purified MaxPab mouse polyclonal antibody (B01P) MaxPab®

Catalog # : H00002966-B01P

規格 : [ 50 ug ]

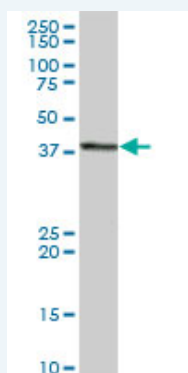
[List All](#)

### Specification

<b>Product Description:</b>	Mouse polyclonal antibody raised against a full-length human GTF2H2 protein.
<b>Immunogen:</b>	GTF2H2 (NP_001506.1, 1 a.a. ~ 395 a.a) full-length human protein.
<b>Sequence:</b>	MDEEPERTKRWEGGYERTWEILKEDESGSLKATIEDILFKAKRKRVEHH GQVRLGMMRHLVWVDGSRMEDQDLKPNRLCTLKLEYFVEEYFDQ NPISQIGIIVTKSKRAEKLTELSGNPRKHITSLKKAVDMTCHGEPSTLYNSLSI AMQTLKHMPGHTSREVLIIIFSSLTTCDPSNIYDLIKTLKAAKIRVSVIGLSAE VRVCTVLARETGGTYHVILDESHYKELLTHHVSPPPASSSSECSLIRMGF PQHTIASLSDQDAKPSFSMAHLDGNTEPGLTLGGYFCPCRAKYCELPV ECKICGLTLVSAPHLARSYHHLFPLDAFQEIPLEEYNGERFCYGCQGELK DQHVVYCAVCQNVFCVDCDVFVHDSLHCCPGCIHKIPAPSGV
<b>Host:</b>	Mouse
<b>Reactivity:</b>	Human
<b>Quality Control Testing:</b>	Antibody reactive against mammalian transfected lysate.
<b>Storage Buffer:</b>	In 1x PBS, pH 7.4
<b>Storage Instruction:</b>	Store at -20°C or lower. Aliquot to avoid repeated freezing and thawing.
<b>MSDS:</b>	<a href="#">Download</a>
<b>Datasheet:</b>	<a href="#">Download</a>

### Applications

#### Western Blot (Tissue lysate)



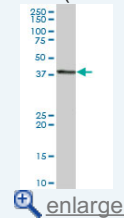
GTF2H2 MaxPab polyclonal antibody. Western Blot analysis of GTF2H2 expression in human pancreas.

[Protocol Download](#)

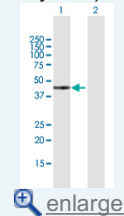
#### Western Blot (Transfected lysate)

### Application Image

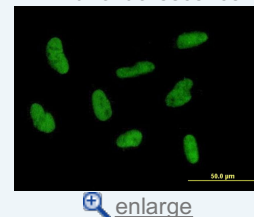
#### Western Blot (Tissue lysate)

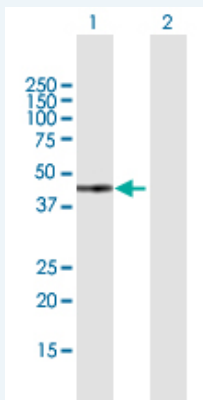


#### Western Blot (Transfected lysate)



#### Immunofluorescence



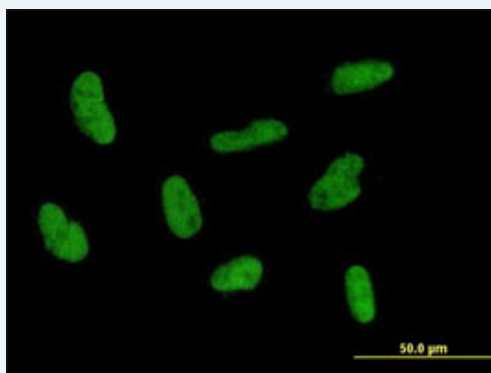


Western Blot analysis of GTF2H2 expression in transfected 293T cell line ([H00002966-T01](#)) by GTF2H2 MaxPab polyclonal antibody.

Lane 1: GTF2H2 transfected lysate(43.45 KDa).  
Lane 2: Non-transfected lysate.

[Protocol Download](#)

### Immunofluorescence



enlarge this image

Immunofluorescence of purified MaxPab antibody to GTF2H2 on HepG2 cell. [antibody concentration 10 ug/ml]

[Protocol Download](#)

### Gene Information

Entrez GeneID: [2966](#)

GeneBank [NM\\_001515.2](#)  
Accession#:

Protein [NP\\_001506.1](#)  
Accession#:

Gene Name: GTF2H2

Gene Alias: BTF2,BTF2P44,MGC102806,T-BTF2P44,TFIIH

Gene Description: general transcription factor IIH, polypeptide 2, 44kDa

Omim ID: [601748](#)

Gene Ontology: [Hyperlink](#)

**Gene Summary:** This gene is part of a 500 kb inverted duplication on chromosome 5q13. This duplicated region contains at least four genes and repetitive elements which make it prone to rearrangements and deletions. The repetitiveness and complexity of the sequence have also caused difficulty in determining the organization of this genomic region. This gene is within the telomeric copy of the duplication. Deletion of this gene sometimes accompanies deletion of the neighboring SMN1 gene in spinal muscular atrophy (SMA) patients but it is unclear if deletion of this

gene contributes to the SMA phenotype. This gene encodes the 44 kDa subunit of RNA polymerase II transcription initiation factor IIH which is involved in basal transcription and nucleotide excision repair. Transcript variants for this gene have been described, but their full length nature has not been determined. A second copy of this gene within the centromeric copy of the duplication has been described in the literature. It is reported to be different by either two or four base pairs; however, no sequence data is currently available for the centromeric copy of the gene. [provided by RefSeq

---

**Other Designations:** general transcription factor IIH, polypeptide 2 (44kD subunit), general transcription factor IIH, polypeptide 2, 44kD subunit

---

### Gene Pathway

---

[Basal transcription factors](#) [Nucleotide excision repair](#)

### Related Disease

---

[Spinal Muscular Atrophies of Childhood](#) [Spinal muscular atrophy](#)

---

[服務條款](#) | [隱私權政策](#) | [著作及商標](#) | [網站地圖](#)

©2016 亞諾法生技股份有限公司 Abnova Corporation. 版權所有.