



# SZABO SCANDIC

Part of Europa Biosite

## Produktinformation



Forschungsprodukte & Biochemikalien



Zellkultur & Verbrauchsmaterial



Diagnostik & molekulare Diagnostik



Laborgeräte & Service

Weitere Information auf den folgenden Seiten!  
See the following pages for more information!



### Lieferung & Zahlungsart

siehe unsere [Liefer- und Versandbedingungen](#)

### Zuschläge

- Mindermengenzuschlag
- Trockeneiszuschlag
- Gefahrgutzuschlag
- Expressversand

### SZABO-SCANDIC HandelsgmbH

Quellenstraße 110, A-1100 Wien

T. +43(0)1 489 3961-0

F. +43(0)1 489 3961-7

[mail@szabo-scandic.com](mailto:mail@szabo-scandic.com)

[www.szabo-scandic.com](http://www.szabo-scandic.com)

[linkedin.com/company/szaboscandic](https://www.linkedin.com/company/szaboscandic) 

## GTF2H4 MaxPab mouse polyclonal antibody (B02) MaxPab®

Catalog # : H00002968-B02

規格 : [ 50 uL ]

List All

### Specification

**Product Description:** Mouse polyclonal antibody raised against a full-length human GTF2H4 protein.

**Immunogen:** GTF2H4 (NP\_001508.1, 1 a.a. ~ 462 a.a) full-length human protein.

**Sequence:**  
 MESTPSRGLNRVHLQCRNLQEFLGGLSPGVLDRLYGHPATCLAVFREL  
 PSLAKNWWMRMLFLEQPLPQAAVALWVKKEFSKAQEESTGLLSGLRIW  
 HTQLPGGLQGLLNPIFRQNLRIALLGGKAWSDDTSQLGPDKHARDV  
 PSLDKYAEERWEVVLHFMVGSAAVSQDLAQLLSQAGLMKSTEPGEP  
 PCITSAAGFQFLLLDTPAQLWYFMLQYLQTAQSRGMDLVEILSFLQLSF  
 STLKGDYSVEGMSDSSLNFLQHLREFGLVFQRKRKSRYYPTRLAINLS  
 SGVSGAGGTVHQPGFIVVETNYRLYAYTESELQIALIFSEMLYRFPNM  
 VVAQVTRESVQQAIASGITAAQIIHFLRTRAHPVMLKQTPVLPPTITDQIRL  
 WELERDRLRFTEGVLYNQFLSQVDFELLAHARELGVLVFENSAKRLMV  
 VTPAGHSDVKRFWKRQKHSS

**Host:** Mouse

**Reactivity:** Human

**Quality Control Testing:** Antibody reactive against mammalian transfected lysate.

**Storage Buffer:** No additive

**Storage Instruction:** Store at -20°C or lower. Aliquot to avoid repeated freezing and thawing.

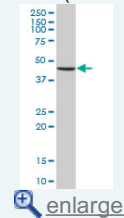
**Note:** For IHC and IF applications, antibody purification with Protein A will be needed prior to use.

**MSDS:**  [Download](#)

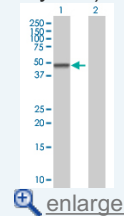
**Datasheet:**  [Download](#)

### Application Image

Western Blot (Tissue lysate)

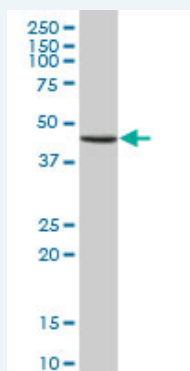


Western Blot (Transfected lysate)



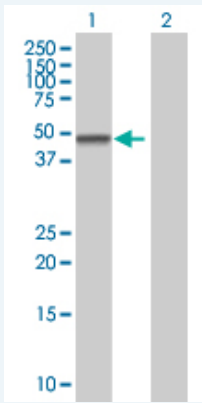
### Applications

Western Blot (Tissue lysate)



GTF2H4 MaxPab polyclonal antibody. Western Blot analysis of GTF2H4 expression in human pancreas.

### Western Blot (Transfected lysate)



Western Blot analysis of GTF2H4 expression in transfected 293T cell line ([H00002968-T02](#)) by GTF2H4 MaxPab polyclonal antibody.

Lane 1: GTF2H4 transfected lysate(50.82 KDa).

Lane 2: Non-transfected lysate.

### Gene Information

Entrez GeneID: [2968](#)

GeneBank [NM\\_001517.4](#)  
Accession#:

Protein [NP\\_001508.1](#)  
Accession#:

Gene Name: GTF2H4

Gene Alias: TFB2,TFIIH

Gene Description: general transcription factor IIH, polypeptide 4, 52kDa

Omim ID: [601760](#)

Gene Ontology: [Hyperlink](#)

Other Designations: OTTHUMP00000029049,OTTHUMP00000164874,TFIIH basal transcription factor complex p52 subunit,general transcription factor IIH, polypeptide 4 (52kD subunit)

### Gene Pathway

[Basal transcription factors](#) [Nucleotide excision repair](#)

### Related Disease

[Abortion](#), [Spontaneous Genetic Predisposition to Disease](#) [Lupus Erythematosus](#), [Systemic Multiple Sclerosis](#)