



SZABO SCANDIC

Part of Europa Biosite

Produktinformation



Forschungsprodukte & Biochemikalien



Zellkultur & Verbrauchsmaterial



Diagnostik & molekulare Diagnostik



Laborgeräte & Service

Weitere Information auf den folgenden Seiten!
See the following pages for more information!



Lieferung & Zahlungsart

siehe unsere [Liefer- und Versandbedingungen](#)

Zuschläge

- Mindermengenzuschlag
- Trockeneiszuschlag
- Gefahrgutzuschlag
- Expressversand

SZABO-SCANDIC HandelsgmbH

Quellenstraße 110, A-1100 Wien

T. +43(0)1 489 3961-0

F. +43(0)1 489 3961-7

mail@szabo-scandic.com

www.szabo-scandic.com

[linkedin.com/company/szaboscandic](https://www.linkedin.com/company/szaboscandic) 

GTF2I monoclonal antibody (M01), clone 3E2

Catalog # : H00002969-M01

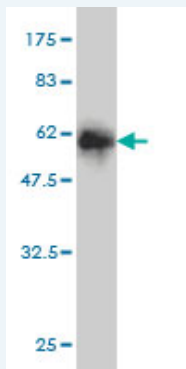
規格 : [100 ug]

[List All](#)

Specification

Product Description:	Mouse monoclonal antibody raised against a full length recombinant GTF2I.
Immunogen:	GTF2I (AAH04472.1, 36 a.a. ~ 274 a.a) full-length recombinant protein with GST tag. MW of the GST tag alone is 26 KDa.
Sequence:	ELAKSKAEVACIAVYETDVFVVGTERGRAFVNTRKDFQKDFVKYCVEEE EKAAEMHKMKSTTQANRMSVDAVEIETLRKTVEDYFCFCYGKALGKSTV VPVPYEKMLRDQSAVVVQGLPEGVAFKHPENYDLATLKWILENKAGISFII KRPFLPKKHVGGRMVMTDADRSILSPGGSCGPIKVKTEPTEDSGISLEM AAVTVKEESEDPDYYQYNIQGSJHSSEGNEGTEMEVPAEG
Host:	Mouse
Reactivity:	Human
Isotype:	IgG2a Kappa

Quality Control Testing: Antibody Reactive Against Recombinant Protein.



Western Blot detection against Immunogen (52.03 KDa) .

Storage Buffer: In 1x PBS, pH 7.4

Storage Instruction: Store at -20°C or lower. Aliquot to avoid repeated freezing and thawing.

MSDS: [Download](#)

Datasheet: [Download](#)

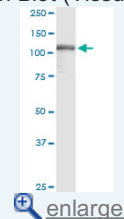
Publication Reference

1. [An SNP in an ultraconserved regulatory element affects Dlx5/Dlx6 regulation in the forebrain.](#)
Poitras L, Yu M, Lesage-Pelletier C, Macdonald RB, Gagne JP, Hatch G, Kelly I, Hamilton SP, Rubenstein JL, Poirier GG, Ekker M. *Development*. 2010 Sep;137(18):3089-97. Epub 2010 Aug 11.

Applications

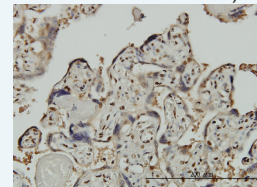
Application Image

Western Blot (Tissue lysate)



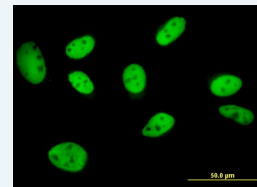
Western Blot (Recombinant protein)

Immunohistochemistry (Formalin/PFA-fixed paraffin-embedded sections)



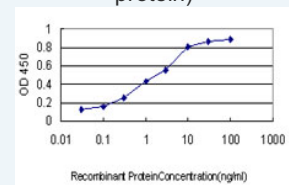
[enlarge](#)

Immunofluorescence



[enlarge](#)

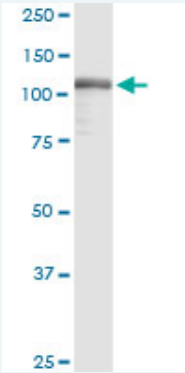
Sandwich ELISA (Recombinant protein)



[enlarge](#)

ELISA

Western Blot (Tissue lysate)



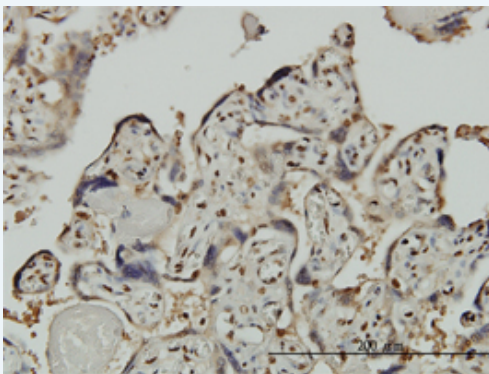
GTF2I monoclonal antibody (M01), clone 3E2. Western Blot analysis of GTF2I expression in human colon.

 [Protocol Download](#)

Western Blot (Recombinant protein)

 [Protocol Download](#)

Immunohistochemistry (Formalin/PFA-fixed paraffin-embedded sections)

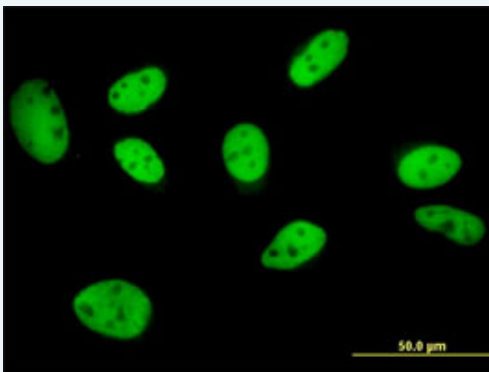


 [enlarge this image](#)

Immunoperoxidase of monoclonal antibody to GTF2I on formalin-fixed paraffin-embedded human placenta. [antibody concentration 3 ug/ml]


 [Protocol Download](#)

Immunofluorescence

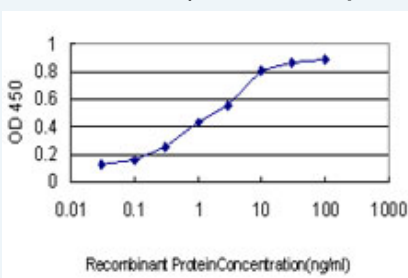


 [enlarge this image](#)

Immunofluorescence of monoclonal antibody to GTF2I on HeLa cell . [antibody concentration 10 ug/ml]

 [Protocol Download](#)

Sandwich ELISA (Recombinant protein)



Detection limit for recombinant GST tagged GTF2I is approximately 0.03ng/ml as a capture

antibody.

 Protocol Download

ELISA

Gene Information

Entrez GeneID: [2969](#)

**GeneBank
Accession#:** [BC004472](#)

**Protein
Accession#:** [AAH04472.1](#)

Gene Name: GTF2I

Gene Alias: BAP-135,BAP135,BTKAP1,DIWS,FLJ38776,FLJ56355,IB291,SPIN,TFII-I,WBS,WBSCR6

**Gene
Description:** general transcription factor II, i

Omim ID: [194050](#), [601679](#)

Gene Ontology: [Hyperlink](#)

Gene Summary: This gene encodes a multifunctional phosphoprotein with roles in transcription and signal transduction. It is deleted in Williams-Beuren syndrome, a multisystem developmental disorder caused by the deletion of contiguous genes at chromosome 7q11.23. Alternative splicing results in multiple transcript variants. Related pseudogenes have been identified on chromosomes 7, 13 and 21. [provided by RefSeq]

**Other
Designations:** BTK-associated protein, 135kD,Bruton tyrosine kinase-associated protein 135,Williams-Beuren syndrome chromosome region 6

Gene Pathway

[Basal transcription factors](#)

服務條款 | 隱私權政策 | 著作及商標 | 網站地圖

©2016 亞諾法生技股份有限公司 Abnova Corporation. 版權所有.