



SZABO SCANDIC

Part of Europa Biosite

Produktinformation



Forschungsprodukte & Biochemikalien



Zellkultur & Verbrauchsmaterial



Diagnostik & molekulare Diagnostik



Laborgeräte & Service

Weitere Information auf den folgenden Seiten!
See the following pages for more information!



Lieferung & Zahlungsart

siehe unsere [Liefer- und Versandbedingungen](#)

Zuschläge

- Mindermengenzuschlag
- Trockeneiszuschlag
- Gefahrgutzuschlag
- Expressversand

SZABO-SCANDIC HandelsgmbH

Quellenstraße 110, A-1100 Wien

T. +43(0)1 489 3961-0

F. +43(0)1 489 3961-7

mail@szabo-scandic.com

www.szabo-scandic.com

[linkedin.com/company/szaboscandic](https://www.linkedin.com/company/szaboscandic) 

BRF1 purified MaxPab mouse polyclonal antibody (B01P) MaxPab®

Catalog # : H00002972-B01P

規格 : [50 ug]

[List All](#)

Specification

Product Description: Mouse polyclonal antibody raised against a full-length human BRF1 protein.

Immunogen: BRF1 (NP_663718.1, 1 a.a. ~ 473 a.a) full-length human protein.

Sequence:
 MTALRLLQRMKRDWMHTGRRPSGLCGAALLVAARMHDFRRTVKEVISV
 VKVCESTLRKRLTEFEDTPTSQLTIDFMKIDLEEECDPPSYTAGQRKLR
 MKQLEQVL SKKLEEEVEGEISSYQDAIEIELENSRPKAKGGLASLAKDGGSTE
 DTASSLCGEEDTEDEELEAAASHLNKDLYRELLGGAPGSSEAAGSPEW
 GGRPPALGSLDPLPTAASLGISDSIRECISQSSDPKASGDGELDLSGI
 DDLEIDRYILNESEARVKAELWMRENAEYLREQREKEARIAKEKELGIYKE
 HKPKKCKRRREPIQASTAREAIEKMLEQKKISSKINYSVLRGLSSAGGGSP
 HREDAQPEHSASARKLSRRRTPASRSGADPVT SVGKRLRPLVSTQPAK
 KVATGEALLPSSPTLGAEPARPQAVLVESGPVSYHADEEADEEEPEDEED
 GEPCVSALQMMGSNDYGCDDGDEDDGY

Host: Mouse

Reactivity: Human

Quality Control Testing: Antibody reactive against mammalian transfected lysate.

Storage Buffer: In 1x PBS, pH 7.4

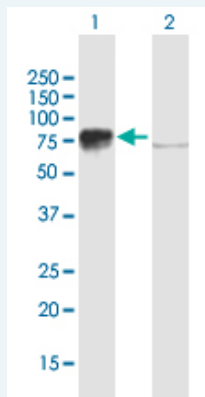
Storage Instruction: Store at -20°C or lower. Aliquot to avoid repeated freezing and thawing.

MSDS: [Download](#)

Datasheet: [Download](#)

Applications

Western Blot (Transfected lysate)

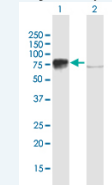


Western Blot analysis of BRF1 expression in transfected 293T cell line (H00002972-T01) by BRF1 MaxPab polyclonal antibody.

Lane 1: BRF1 transfected lysate(52.03 KDa).
 Lane 2: Non-transfected lysate.

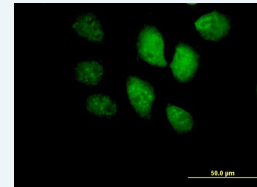
Application Image

Western Blot (Transfected lysate)



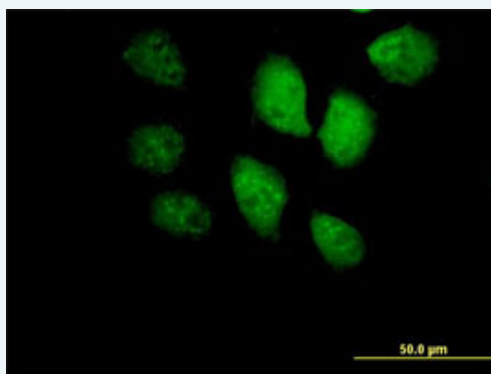
[enlarge](#)


Immunofluorescence



[enlarge](#)

Immunofluorescence



 enlarge this image

Immunofluorescence of purified MaxPab antibody to BRF1 on HeLa cell. [antibody concentration 10 ug/ml]

 Protocol Download

Gene Information

Entrez GeneID: [2972](#)

GeneBank [NM_145685.1](#)

Accession#:

Protein [NP_663718.1](#)

Accession#:

Gene Name: BRF1

Gene Alias: BRF,FLJ42674,FLJ43034,GTF3B,MGC105048,TAF3B2,TAF3C,TAFIII90,TF3B90,TFIIIB90,hBRF

Gene Description: BRF1 homolog, subunit of RNA polymerase III transcription initiation factor IIIB (*S. cerevisiae*)

Omim ID: [604902](#)

Gene Ontology: [Hyperlink](#)

Gene Summary: This gene encodes one of the three subunits of the RNA polymerase III transcription factor complex. This complex plays a central role in transcription initiation by RNA polymerase III on genes encoding tRNA, 5S rRNA, and other small structural RNAs. The gene product belongs to the TF2B family. Two alternatively spliced variants encoding different isoforms, that function at different promoters transcribed by RNA polymerase III, have been identified. Other transcript variants are possible, but their full-length natures have not been completely characterized. [provided by RefSeq]

Other Designations: B - related factor 1,TATA box binding protein (TBP)-associated factor 3C,TATA box binding protein (TBP)-associated factor, RNA polymerase III, GTF3B subunit 2,TATA box binding protein (TBP)-associated factor, RNA polymerase III, subunit 2,TBP - associated