



# SZABO SCANDIC

Part of Europa Biosite

## Produktinformation



Forschungsprodukte & Biochemikalien



Zellkultur & Verbrauchsmaterial



Diagnostik & molekulare Diagnostik



Laborgeräte & Service

Weitere Information auf den folgenden Seiten!  
See the following pages for more information!



### Lieferung & Zahlungsart

siehe unsere [Liefer- und Versandbedingungen](#)

### Zuschläge

- Mindermengenzuschlag
- Trockeneiszuschlag
- Gefahrgutzuschlag
- Expressversand

### SZABO-SCANDIC HandelsgmbH

Quellenstraße 110, A-1100 Wien

T. +43(0)1 489 3961-0

F. +43(0)1 489 3961-7

[mail@szabo-scandic.com](mailto:mail@szabo-scandic.com)

[www.szabo-scandic.com](http://www.szabo-scandic.com)

[linkedin.com/company/szaboscandic](https://www.linkedin.com/company/szaboscandic) 

## BRF1 purified MaxPab rabbit polyclonal antibody (D01P) MaxPab®

Catalog # : H00002972-D01P

規格 : [ 100 ug ]

[List All](#)

### Specification

**Product Description:** Rabbit polyclonal antibody raised against a full-length human BRF1 protein.

**Immunogen:** BRF1 (NP\_663718.1, 1 a.a. ~ 473 a.a) full-length human protein.

**Sequence:**  
 MTALRLLQRMKRDWMHTGRRPSGLCGAALLVAARMHDFRRTVKEVISV  
 VKVCESTLRKRLTEFEDTPTSQLTIDFMKIDLEEECDPPSYTAGQRKLR  
 MKQLEQVL SKKLEEEVEGEISSYQDAIEI ELEN SRPKAKGGLASLAKDGS  
 TE DTASSLCGEEDTEDEELEAAASHLNKDLYRELLGGAPGSSEAAGSPEW  
 GGRPPALGSLDPLPTAASLGISDSIRECISQSSDPKASGDGELDLSGI  
 DDLEIDRYILNESEARVKAELWMRENAEYLREQREKEARIAKEKELGIYKE  
 HKPKKCKRRREPIQASTAREAIEKMLEQKKISSKINYSVLRGLSSAGGGSP  
 HREDAQPEHSASARKLSRRRTPASRSGADPVT SVGKRLRPLVSTQPAK  
 KVATGEALLPSSPTLGAEPARPQAVLVESGPVSYHADEEADEEEPEDEED  
 GEPCVSALQMMGSNDYGCDDGDEDDGY

**Host:** Rabbit

**Reactivity:** Human

**Quality Control Testing:** Antibody reactive against mammalian transfected lysate.

**Storage Buffer:** In 1x PBS, pH 7.4

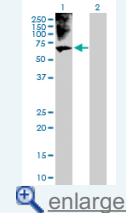
**Storage Instruction:** Store at -20°C or lower. Aliquot to avoid repeated freezing and thawing.

**MSDS:**  [Download](#)

**Datasheet:**  [Download](#)

### Application Image

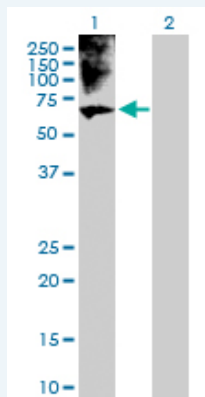
Western Blot (Transfected lysate)



 enlarge

### Applications

Western Blot (Transfected lysate)



Western Blot analysis of BRF1 expression in transfected 293T cell line (H00002972-T01) by BRF1 MaxPab polyclonal antibody.

Lane 1: BRF1 transfected lysate(51.80 KDa).  
 Lane 2: Non-transfected lysate.

## Gene Information

**Entrez GeneID:** [2972](#)

**GeneBank Accession#:** [NM\\_145685.1](#)

**Protein Accession#:** [NP\\_663718.1](#)

**Gene Name:** BRF1

**Gene Alias:** BRF,FLJ42674,FLJ43034,GTF3B,MGC105048,TAF3B2,TAF3C,TAFIII90,TF3B90,TFIIIB90,hBRF

**Gene Description:** BRF1 homolog, subunit of RNA polymerase III transcription initiation factor III B (*S. cerevisiae*)

**Omim ID:** [604902](#)

**Gene Ontology:** [Hyperlink](#)

**Gene Summary:** This gene encodes one of the three subunits of the RNA polymerase III transcription factor complex. This complex plays a central role in transcription initiation by RNA polymerase III on genes encoding tRNA, 5S rRNA, and other small structural RNAs. The gene product belongs to the TF2B family. Two alternatively spliced variants encoding different isoforms, that function at different promoters transcribed by RNA polymerase III, have been identified. Other transcript variants are possible, but their full-length natures have not been completely characterized. [provided by RefSeq]

**Other Designations:** B - related factor 1,TATA box binding protein (TBP)-associated factor 3C,TATA box binding protein (TBP)-associated factor, RNA polymerase III, GTF3B subunit 2,TATA box binding protein (TBP)-associated factor, RNA polymerase III, subunit 2,TBP - associated