



# SZABO SCANDIC

Part of Europa Biosite

## Produktinformation



Forschungsprodukte & Biochemikalien



Zellkultur & Verbrauchsmaterial



Diagnostik & molekulare Diagnostik



Laborgeräte & Service

Weitere Information auf den folgenden Seiten!  
See the following pages for more information!



### Lieferung & Zahlungsart

siehe unsere [Liefer- und Versandbedingungen](#)

### Zuschläge

- Mindermengenzuschlag
- Trockeneiszuschlag
- Gefahrgutzuschlag
- Expressversand

### SZABO-SCANDIC HandelsgmbH

Quellenstraße 110, A-1100 Wien

T. +43(0)1 489 3961-0

F. +43(0)1 489 3961-7

[mail@szabo-scandic.com](mailto:mail@szabo-scandic.com)

[www.szabo-scandic.com](http://www.szabo-scandic.com)

[linkedin.com/company/szaboscandic](https://www.linkedin.com/company/szaboscandic) 

## BRF1 monoclonal antibody (M01), clone 2E9

Catalog # : H00002972-M01

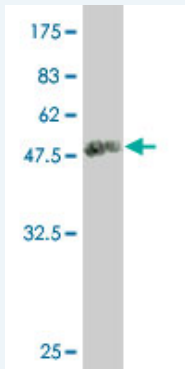
規格 : [ 50 ug ]

[List All](#)

### Specification

<b>Product Description:</b>	Mouse monoclonal antibody raised against a full length recombinant BRF1.
<b>Immunogen:</b>	BRF1 (AAH16743, 1 a.a. ~ 208 a.a) full-length recombinant protein with GST tag. MW of the GST tag alone is 26 KDa.
<b>Sequence:</b>	MTGRVCRGCGGTDIELDAARGDTVCTACGSVLEDNIIMSEVQFVSSG GGSSAVGQFVSLDGAGKPTLGGGFHVNLGKESRAQTLQNGRRHHHL GNQLQLNQHCLDTAFNFFKMAVSRHLTRGRKMAHMAACLYPVCRTEGT PHMLLDLSDLLQVDSL RPASFP TWGCDLGVVTRVVTGVYPRCLHASQW PVCAACPVRKFWSVG
<b>Host:</b>	Mouse
<b>Reactivity:</b>	Human
<b>Isotype:</b>	IgG1 Kappa

**Quality Control Testing:** Antibody Reactive Against Recombinant Protein.



Western Blot detection against Immunogen (48.62 KDa) .

**Storage Buffer:** In 1x PBS, pH 7.4

**Storage Instruction:** Store at -20°C or lower. Aliquot to avoid repeated freezing and thawing.

**MSDS:** [Download](#)

**Datasheet:** [Download](#)

### Applications

**Western Blot (Recombinant protein)**

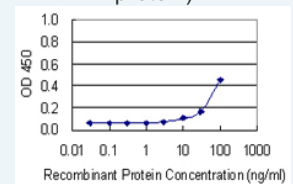
[Protocol Download](#)

**Sandwich ELISA (Recombinant protein)**

### Application Image

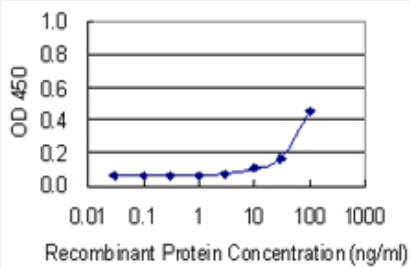
Western Blot (Recombinant protein)

Sandwich ELISA (Recombinant protein)



[enlarge](#)

ELISA



Detection limit for recombinant GST tagged BRF1 is 3 ng/ml as a capture antibody.

 [Protocol Download](#)

## ELISA

### Gene Information

Entrez GeneID: [2972](#)

GeneBank [BC016743](#)

Accession#:

Protein [AAH16743](#)

Accession#:

Gene Name: BRF1

Gene Alias: BRF,FLJ42674,FLJ43034,GTF3B,MGC105048,TAF3B2,TAF3C,TAFIII90,TF3B90,TFIIIB90,hBRF

Gene Description: BRF1 homolog, subunit of RNA polymerase III transcription initiation factor III B (*S. cerevisiae*)

Omim ID: [604902](#)

Gene Ontology: [Hyperlink](#)

**Gene Summary:** This gene encodes one of the three subunits of the RNA polymerase III transcription factor complex. This complex plays a central role in transcription initiation by RNA polymerase III on genes encoding tRNA, 5S rRNA, and other small structural RNAs. The gene product belongs to the TF2B family. Two alternatively spliced variants encoding different isoforms, that function at different promoters transcribed by RNA polymerase III, have been identified. Other transcript variants are possible, but their full-length natures have not been completely characterized. [provided by RefSeq]

**Other Designations:** B - related factor 1,TATA box binding protein (TBP)-associated factor 3C,TATA box binding protein (TBP)-associated factor, RNA polymerase III, GTF3B subunit 2,TATA box binding protein (TBP)-associated factor, RNA polymerase III, subunit 2,TBP - associated