



# SZABO SCANDIC

Part of Europa Biosite

## Produktinformation



Forschungsprodukte & Biochemikalien



Zellkultur & Verbrauchsmaterial



Diagnostik & molekulare Diagnostik



Laborgeräte & Service

Weitere Information auf den folgenden Seiten!  
See the following pages for more information!



### Lieferung & Zahlungsart

siehe unsere [Liefer- und Versandbedingungen](#)

### Zuschläge

- Mindermengenzuschlag
- Trockeneiszuschlag
- Gefahrgutzuschlag
- Expressversand

### SZABO-SCANDIC HandelsgmbH

Quellenstraße 110, A-1100 Wien

T. +43(0)1 489 3961-0

F. +43(0)1 489 3961-7

[mail@szabo-scandic.com](mailto:mail@szabo-scandic.com)

[www.szabo-scandic.com](http://www.szabo-scandic.com)

[linkedin.com/company/szaboscandic](https://www.linkedin.com/company/szaboscandic) 

## GUCY1A2 polyclonal antibody (A01)

Catalog # : H00002977-A01

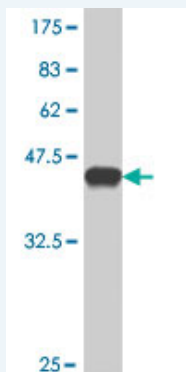
規格 : [ 50 uL ]

[List All](#)

### Specification

<b>Product Description:</b>	Mouse polyclonal antibody raised against a partial recombinant GUCY1A2.
<b>Immunogen:</b>	GUCY1A2 (NP_000846, 296 a.a. ~ 401 a.a) partial recombinant protein with GST tag.
<b>Sequence:</b>	CENTNIMKNLPQGT SQVPADLRISINTFCRAFPFHLMFDPMSVLQLGEG LRKQLRCDTHKVLKFEDCFEIVSPKVNATFERVLLRLSTPFVIRTKPEASG SENKD
<b>Host:</b>	Mouse
<b>Reactivity:</b>	Human

**Quality Control Testing:** Antibody Reactive Against Recombinant Protein.



Western Blot detection against Immunogen (37.77 kDa) .

**Storage Buffer:** 50 % glycerol

**Storage Instruction:** Store at -20°C or lower. Aliquot to avoid repeated freezing and thawing.

**MSDS:** [Download](#)

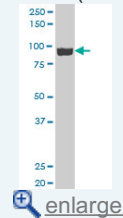
**Datasheet:** [Download](#)

### Applications

Western Blot (Cell lysate)

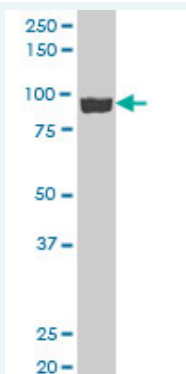
### Application Image

Western Blot (Cell lysate)



Western Blot (Recombinant protein)

ELISA



GUCY1A2 polyclonal antibody (A01), Lot # 050920JC01 Western Blot analysis of GUCY1A2 expression in HeLa ( Cat # L013V1 ).

 [Protocol Download](#)

#### Western Blot (Recombinant protein)

 [Protocol Download](#)

#### ELISA

#### Gene Information

**Entrez GeneID:** [2977](#)

**GeneBank Accession#:** [NM\\_000855](#)

**Protein Accession#:** [NP\\_000846](#)

**Gene Name:** GUCY1A2

**Gene Alias:** GC-SA2,GUC1A2

**Gene Description:** guanylate cyclase 1, soluble, alpha 2

**Omim ID:** [601244](#)

**Gene Ontology:** [Hyperlink](#)

**Gene Summary:** Soluble guanylyl (or guanylate) cyclases are heterodimeric enzymes consisting of an alpha subunit, such as alpha-2 (GUCY1A2), and a beta subunit, typically beta-1 (GUCY1B3; MIM 139397), which are activated by nitric oxide (NO) and which catalyze conversion of GTP to 3-prime, 5-prime-cyclic GMP and pyrophosphate (Harteneck et al., 1991 [PubMed 1683630]).[supplied by OMIM]

**Other Designations:** -

#### Gene Pathway

[Gap junction](#) [Long-term depression](#) [Purine metabolism](#)  
[Vascular smooth muscle contraction](#)

#### Related Disease

[Celiac Disease](#) [Genetic Predisposition to Disease](#) [Tobacco Use Disorder](#)

