



# SZABO SCANDIC

Part of Europa Biosite

## Produktinformation



Forschungsprodukte & Biochemikalien



Zellkultur & Verbrauchsmaterial



Diagnostik & molekulare Diagnostik



Laborgeräte & Service

Weitere Information auf den folgenden Seiten!  
See the following pages for more information!



### Lieferung & Zahlungsart

siehe unsere [Liefer- und Versandbedingungen](#)

### Zuschläge

- Mindermengenzuschlag
- Trockeneiszuschlag
- Gefahrgutzuschlag
- Expressversand

### SZABO-SCANDIC HandelsgmbH

Quellenstraße 110, A-1100 Wien

T. +43(0)1 489 3961-0

F. +43(0)1 489 3961-7

[mail@szabo-scandic.com](mailto:mail@szabo-scandic.com)

[www.szabo-scandic.com](http://www.szabo-scandic.com)

[linkedin.com/company/szaboscandic](https://www.linkedin.com/company/szaboscandic) 

## GUCA1A polyclonal antibody (A01)

Catalog # : H00002978-A01

規格 : [ 50 uL ]

List All

### Specification

**Product Description:** Mouse polyclonal antibody raised against a partial recombinant GUCA1A.

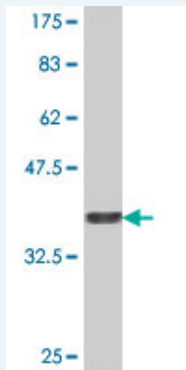
**Immunogen:** GUCA1A (NP\_000400, 1 a.a. ~ 93 a.a) partial recombinant protein with GST tag.

**Sequence:** MGNVMEGKSVEELSSTECHQWYKFMTECPGQLTYEFRQFFGLKN LSPSASQYVEQMFETFDNFKDGYIDFMEYVAALSLVLKGGKVEQKLR

**Host:** Mouse

**Reactivity:** Human

**Quality Control Testing:** Antibody Reactive Against Recombinant Protein.



Western Blot detection against Immunogen (36.34 KDa) .

**Storage Buffer:** 50 % glycerol

**Storage Instruction:** Store at -20°C or lower. Aliquot to avoid repeated freezing and thawing.

**MSDS:** [Download](#)

**Datasheet:** [Download](#)

### Applications

**Western Blot (Recombinant protein)**

[Protocol Download](#)

**ELISA**

### Gene Information

**Entrez GeneID:** [2978](#)

**GeneBank Accession#:** [NM\\_000409](#)

### Application Image

Western Blot (Recombinant protein)

ELISA

**Protein** [NP\\_000400](#)

**Accession#:**

**Gene Name:** [GUCA1A](#)

**Gene Alias:** [COD3](#), [GCAP](#), [GCAP1](#), [GUCA](#), [GUCA1](#)

**Gene Description:** [guanylate cyclase activator 1A \(retina\)](#)

**Omim ID:** [600364](#), [602093](#)

**Gene Ontology:** [Hyperlink](#)

**Gene Summary:** This gene plays a role in the recovery of retinal photoreceptors from photobleaching. In the recovery phase, the phototransduction messenger cGMP is replenished by retinal guanylyl cyclase-1 (GC1). GC1 is activated by decreasing Ca(2+) concentrations following photobleaching. The protein encoded by this gene, guanylyl cyclase activating protein 1 (GCAP1), mediates the sensitivity of GC1 to Ca(2+) concentrations. GCAP1 promotes activity of GC1 at low Ca(2+) concentrations and inhibits GC1 activity at high Ca(2+) concentrations. Mutations in this gene cause autosomal dominant cone dystrophy (COD3); a disease characterized by reduced visual acuity associated with progressive loss of color vision. Mutations in this gene prohibit the inactivation of RetGC1 at high Ca(2+) concentrations; causing the constitutive activation of RetGC1 and, presumably, increased cell death. This gene is expressed in retina and spermatagonia. [provided by RefSeq]

**Other Designations:** [OTTHUMP00000016397](#), [OTTHUMP000000196466](#)

#### Gene Pathway

[Olfactory transduction](#)

#### Related Disease

[Retinal Degeneration](#) [Retinal Diseases](#)