



# SZABO SCANDIC

Part of Europa Biosite

## Produktinformation



Forschungsprodukte & Biochemikalien



Zellkultur & Verbrauchsmaterial



Diagnostik & molekulare Diagnostik



Laborgeräte & Service

Weitere Information auf den folgenden Seiten!  
See the following pages for more information!



### Lieferung & Zahlungsart

siehe unsere [Liefer- und Versandbedingungen](#)

### Zuschläge

- Mindermengenzuschlag
- Trockeneiszuschlag
- Gefahrgutzuschlag
- Expressversand

### SZABO-SCANDIC HandelsgmbH

Quellenstraße 110, A-1100 Wien

T. +43(0)1 489 3961-0

F. +43(0)1 489 3961-7

[mail@szabo-scandic.com](mailto:mail@szabo-scandic.com)

[www.szabo-scandic.com](http://www.szabo-scandic.com)

[linkedin.com/company/szaboscandic](https://www.linkedin.com/company/szaboscandic) 

## GUCA1A monoclonal antibody (M04), clone 2F7

Catalog # : H00002978-M04

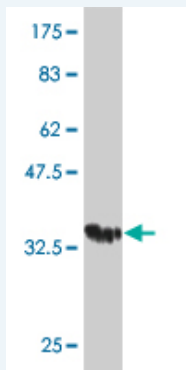
規格 : [ 100 ug ]

[List All](#)

### Specification

<b>Product Description:</b>	Mouse monoclonal antibody raised against a partial recombinant GUCA1A.
<b>Immunogen:</b>	GUCA1A (NP_000400, 1 a.a. ~ 93 a.a) partial recombinant protein with GST tag. MW of the GST tag alone is 26 KDa.
<b>Sequence:</b>	MGNVMEGKSVEELSSTECHQWYKKFMTECPGQLTLYEFRQFFGLKN LSPSASQYVEQMFETFDNFKDGYIDFMEYVAALSLVLKGGKVEQKLR
<b>Host:</b>	Mouse
<b>Reactivity:</b>	Human
<b>Isotype:</b>	IgG2b Kappa

**Quality Control Testing:** Antibody Reactive Against Recombinant Protein.



Western Blot detection against Immunogen (35.97 KDa) .

**Storage Buffer:** In 1x PBS, pH 7.4

**Storage Instruction:** Store at -20°C or lower. Aliquot to avoid repeated freezing and thawing.

**MSDS:** [Download](#)

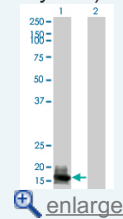
**Datasheet:** [Download](#)

### Applications

**Western Blot (Transfected lysate)**

### Application Image

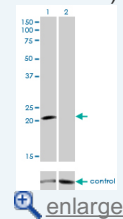
Western Blot (Transfected lysate)

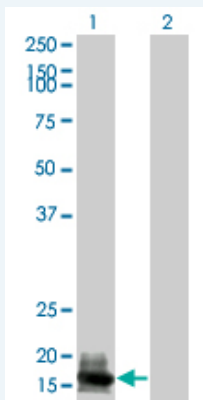


Western Blot (Recombinant protein)

ELISA

RNAi Knockdown (Antibody validated)





Western Blot analysis of GUCA1A expression in transfected 293T cell line by GUCA1A monoclonal antibody (M04), clone 2F7.

Lane 1: GUCA1A transfected lysate(22.9 KDa).  
Lane 2: Non-transfected lysate.

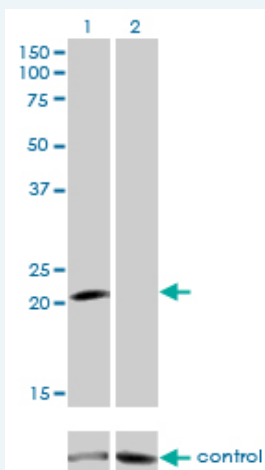
[Protocol Download](#)

### Western Blot (Recombinant protein)

[Protocol Download](#)

### ELISA

### RNAi Knockdown (Antibody validated)



Western blot analysis of GUCA1A over-expressed 293 cell line, cotransfected with GUCA1A Validated Chimera RNAi ( Cat # H00002978-R01V ) (Lane 2) or non-transfected control (Lane 1). Blot probed with GUCA1A monoclonal antibody (M04), clone 2F7 (Cat # H00002978-M04 ). GAPDH ( 36.1 kDa ) used as specificity and loading control.

[Protocol Download](#)

### Gene Information

Entrez GeneID: [2978](#)

GeneBank [NM\\_000409](#)  
Accession#:

Protein [NP\\_000400](#)  
Accession#:

Gene Name: GUCA1A

Gene Alias: COD3,GCAP,GCAP1,GUCA,GUCA1

Gene Description: guanylate cyclase activator 1A (retina)

Omim ID: [600364](#), [602093](#)

**Gene Ontology:** [Hyperlink](#)

**Gene Summary:** This gene plays a role in the recovery of retinal photoreceptors from photobleaching. In the recovery phase, the phototransduction messenger cGMP is replenished by retinal guanylyl cyclase-1 (GC1). GC1 is activated by decreasing Ca(2+) concentrations following photobleaching. The protein encoded by this gene, guanylyl cyclase activating protein 1 (GCAP1), mediates the sensitivity of GC1 to Ca(2+) concentrations and inhibits GC1 activity at high Ca(2+) concentrations. GCAP1 promotes activity of GC1 at low Ca(2+) concentrations and inhibits GC1 activity at high Ca(2+) concentrations. Mutations in this gene cause autosomal dominant cone dystrophy (COD3); a disease characterized by reduced visual acuity associated with progressive loss of color vision. Mutations in this gene prohibit the inactivation of RetGC1 at high Ca(2+) concentrations; causing the constitutive activation of RetGC1 and, presumably, increased cell death. This gene is expressed in retina and spermatagonia. [provided by RefSeq]

**Other Designations:** OTTHUMP00000016397,OTTHUMP000000196466

### Gene Pathway

[Olfactory transduction](#)

### Related Disease

[Retinal Degeneration](#) [Retinal Diseases](#)

[服務條款](#) | [隱私權政策](#) | [著作及商標](#) | [網站地圖](#)

©2016 亞諾法生技股份有限公司 Abnova Corporation. 版權所有.