



SZABO SCANDIC

Part of Europa Biosite

Produktinformation



Forschungsprodukte & Biochemikalien



Zellkultur & Verbrauchsmaterial



Diagnostik & molekulare Diagnostik



Laborgeräte & Service

Weitere Information auf den folgenden Seiten!
See the following pages for more information!



Lieferung & Zahlungsart

siehe unsere [Liefer- und Versandbedingungen](#)

Zuschläge

- Mindermengenzuschlag
- Trockeneiszuschlag
- Gefahrgutzuschlag
- Expressversand

SZABO-SCANDIC HandelsgmbH

Quellenstraße 110, A-1100 Wien

T. +43(0)1 489 3961-0

F. +43(0)1 489 3961-7

mail@szabo-scandic.com

www.szabo-scandic.com

[linkedin.com/company/szaboscandic](https://www.linkedin.com/company/szaboscandic) 

GUCY1A3 purified MaxPab rabbit polyclonal antibody (D01P) MaxPab®

Catalog # : H00002982-D01P

規格 : [100 ug]

List All

Specification

Product Description: Rabbit polyclonal antibody raised against a full-length human GUCY1A3 protein.

Immunogen: GUCY1A3 (AAH28384.1, 1 a.a. ~ 690 a.a) full-length human protein.

Sequence:
 MFCTKLKDLKITGECPFLLAPGQVPNESSEEAAGSSESCKATMPICQDI
 PEKNIQESLPQRKTSRVRVYLHTLAESICKLIFPEFERLNVALQRTLAKHKI
 KESRKSLEDREDFEKTIAEQAVAAGVPVEVIKESLGEEVFKICYEEDENILGV
 VGGTLKDFLNSFSTLLKQSSHQAEAGKRGRLEDASILCLDKEDDFLHVY
 YFFPKRTTSLILPGIKAHMLYETEVEVSLMPPCFHNDCESEFVNQPYLLY
 SVHMKSTKPSLSPSKPQSSLVIPISLFCFTFFHFMFDKDMTILQFGNGI
 RRLMNRDFQGKPNFEEYFEILTPKINQTFSGIMTMLNMQFVVRVRRWD
 NSVKKSSRVMDLKGQMIYVESSAILFLGSPCVDRLEDFTGRGLYLSDIPIH
 NALRDVVLIGEQAQAQDGLKKRLGKLGKATLEQAHQALEEEKKKTVDLLC
 SIFPCEVAQQLWQGGVQAKKFSNMTMLFSDIVGFTAICSQCSPQVITM
 LNALYTRFDQQCGELDVYKQVETIGDAYCVAGGLHKESEDTHAVQIALMAV
 KMMELSDDEVMSPHGEPKMRIGLHSGSVFAGVGVKMPRYCLFGNNVTL
 ANKFESCSVPRKINVSPTTYRLLKDCPGFVFTPRSREELPPNFPSEIPGIC
 HFLDAYQQGTNSKPCFQKKDVEDGNANFLGKASGID

Host: Rabbit

Reactivity: Human

Quality Control Testing: Antibody reactive against mammalian transfected lysate.

Storage Buffer: In 1x PBS, pH 7.4

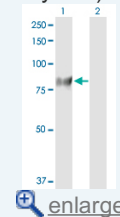
Storage Instruction: Store at -20°C or lower. Aliquot to avoid repeated freezing and thawing.

MSDS:  [Download](#)

Datasheet:  [Download](#)

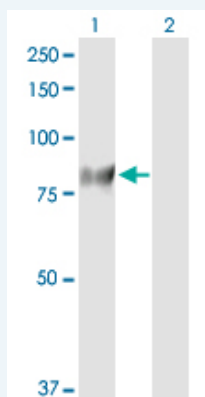
Application Image

Western Blot (Transfected lysate)



Applications

Western Blot (Transfected lysate)



Western Blot analysis of GUCY1A3 expression in transfected 293T cell line (H00002982-

T01) by GUCY1A3 MaxPab polyclonal antibody.

Lane 1: GUCY1A3 transfected lysate(77.50 KDa).

Lane 2: Non-transfected lysate.

 [Protocol Download](#)

Gene Information

Entrez GeneID: [2982](#)

**GeneBank
Accession#:** [BC028384](#)

**Protein
Accession#:** [AAH28384.1](#)

Gene Name: GUCY1A3

Gene Alias: GC-SA3,GUC1A3,GUCA3,GUCSA3,GUCY1A1

**Gene
Description:** guanylate cyclase 1, soluble, alpha 3

Omim ID: [139396](#)

Gene Ontology: [Hyperlink](#)

Gene Summary: Soluble guanylate cyclase (sGC), a heterodimeric protein consisting of an alpha subunit, such as alpha-1 (GUCY1A3), and a beta subunit, typically beta-1 (GUCY1B3; MIM 139397), catalyzes conversion of GTP to the second messenger cGMP and functions as the main receptor for nitric oxide and nitrovasodilator drugs (Zabel et al., 1998 [PubMed 9742212]).[supplied by OMIM]

**Other
Designations:** GC-S-alpha-1,soluble guanylate cyclase large subunit

Gene Pathway

[Gap junction](#) [Long-term depression](#) [Purine metabolism](#)
[Vascular smooth muscle contraction](#)

[服務條款](#) | [隱私權政策](#) | [著作及商標](#) | [網站地圖](#)

©2016 亞諾法生技股份有限公司 Abnova Corporation. 版權所有.