



# SZABO SCANDIC

Part of Europa Biosite

## Produktinformation



Forschungsprodukte & Biochemikalien



Zellkultur & Verbrauchsmaterial



Diagnostik & molekulare Diagnostik



Laborgeräte & Service

Weitere Information auf den folgenden Seiten!  
See the following pages for more information!



### Lieferung & Zahlungsart

siehe unsere [Liefer- und Versandbedingungen](#)

### Zuschläge

- Mindermengenzuschlag
- Trockeneiszuschlag
- Gefahrgutzuschlag
- Expressversand

### SZABO-SCANDIC HandelsgmbH

Quellenstraße 110, A-1100 Wien

T. +43(0)1 489 3961-0

F. +43(0)1 489 3961-7

[mail@szabo-scandic.com](mailto:mail@szabo-scandic.com)

[www.szabo-scandic.com](http://www.szabo-scandic.com)

[linkedin.com/company/szaboscandic](https://www.linkedin.com/company/szaboscandic) 

## GUCY1A3 monoclonal antibody (M01), clone 2H1

Catalog # : H00002982-M01

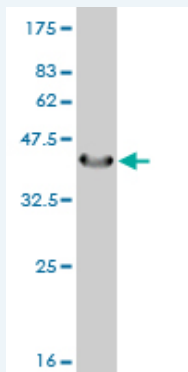
規格 : [ 100 ug ]

[List All](#)

### Specification

<b>Product Description:</b>	Mouse monoclonal antibody raised against a partial recombinant GUCY1A3.
<b>Immunogen:</b>	GUCY1A3 (AAH28384, 41 a.a. ~ 140 a.a) partial recombinant protein with GST tag. MW of the GST tag alone is 26 KDa.
<b>Sequence:</b>	KATMPICQDIPEKNIQESLPQRKTSRSRVYLHTLAESICKLIFPEFERLNVALQRTLAKHKIKESRKSLEREDFEKTLAEQAVAAGVPVEVIKESLGEEV
<b>Host:</b>	Mouse
<b>Reactivity:</b>	Human
<b>Isotype:</b>	IgG2b Kappa

**Quality Control Testing:** Antibody Reactive Against Recombinant Protein.



Western Blot detection against Immunogen (36.74 KDa) .

**Storage Buffer:** In 1x PBS, pH 7.4

**Storage Instruction:** Store at -20°C or lower. Aliquot to avoid repeated freezing and thawing.

**MSDS:** [Download](#)

**Datasheet:** [Download](#)

### Applications

**Western Blot (Recombinant protein)**

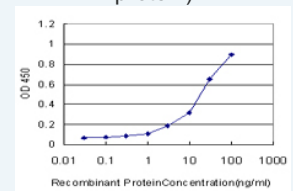
[Protocol Download](#)

**Sandwich ELISA (Recombinant protein)**

### Application Image

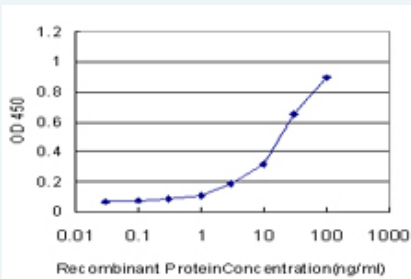
Western Blot (Recombinant protein)

Sandwich ELISA (Recombinant protein)



[enlarge](#)

ELISA



Detection limit for recombinant GST tagged GUCY1A3 is approximately 1ng/ml as a capture antibody.

 [Protocol Download](#)

## ELISA

### Gene Information

Entrez GeneID: [2982](#)

GeneBank [BC028384](#)

Accession#:

Protein [AAH28384](#)

Accession#:

Gene Name: GUCY1A3

Gene Alias: GC-SA3,GUC1A3,GUCA3,GUCSA3,GUCY1A1

Gene Description: guanylate cyclase 1, soluble, alpha 3

Omim ID: [139396](#)

Gene Ontology: [Hyperlink](#)

**Gene Summary:** Soluble guanylate cyclase (sGC), a heterodimeric protein consisting of an alpha subunit, such as alpha-1 (GUCY1A3), and a beta subunit, typically beta-1 (GUCY1B3; MIM 139397), catalyzes conversion of GTP to the second messenger cGMP and functions as the main receptor for nitric oxide and nitrovasodilator drugs (Zabel et al., 1998 [PubMed 9742212]).[supplied by OMIM

Other Designations: GC-S-alpha-1,soluble guanylate cyclase large subunit

### Gene Pathway

[Gap junction](#) [Long-term depression](#) [Purine metabolism](#)  
[Vascular smooth muscle contraction](#)