



# SZABO SCANDIC

Part of Europa Biosite

## Produktinformation



Forschungsprodukte & Biochemikalien



Zellkultur & Verbrauchsmaterial



Diagnostik & molekulare Diagnostik



Laborgeräte & Service

Weitere Information auf den folgenden Seiten!  
See the following pages for more information!



### Lieferung & Zahlungsart

siehe unsere [Liefer- und Versandbedingungen](#)

### Zuschläge

- Mindermengenzuschlag
- Trockeneiszuschlag
- Gefahrgutzuschlag
- Expressversand

### SZABO-SCANDIC HandelsgmbH

Quellenstraße 110, A-1100 Wien

T. +43(0)1 489 3961-0

F. +43(0)1 489 3961-7

[mail@szabo-scandic.com](mailto:mail@szabo-scandic.com)

[www.szabo-scandic.com](http://www.szabo-scandic.com)

[linkedin.com/company/szaboscandic](https://www.linkedin.com/company/szaboscandic) 

## GYG1 monoclonal antibody (M07), clone 3B5

Catalog # : H00002992-M07

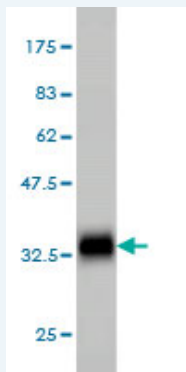
規格 : [ 100 ug ]

[List All](#)

### Specification

<b>Product Description:</b>	Mouse monoclonal antibody raised against a partial recombinant GYG1.
<b>Immunogen:</b>	GYG1 (NP_004121, 1 a.a. ~ 73 a.a) partial recombinant protein with GST tag. MW of the GST tag alone is 26 KDa.
<b>Sequence:</b>	MTDQAFVTLTTNDAYAKGALVLGSSSLKQHRTRRLVVLATPQVSDSMR KVLETVFDEVIMVDVLDGDSAHLT
<b>Host:</b>	Mouse
<b>Reactivity:</b>	Human, Rat
<b>Isotype:</b>	IgG2a Kappa

**Quality Control Testing:** Antibody Reactive Against Recombinant Protein.



Western Blot detection against Immunogen (33.77 KDa) .

**Storage Buffer:** In 1x PBS, pH 7.4

**Storage Instruction:** Store at -20°C or lower. Aliquot to avoid repeated freezing and thawing.

**MSDS:** [Download](#)

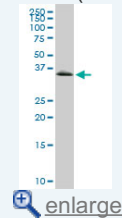
**Datasheet:** [Download](#)

### Publication Reference

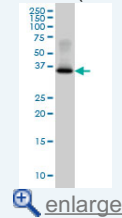
- [A new muscle glycogen storage disease associated with Glycogenin-1 deficiency.](#) Malfatti E, Nilsson J, Hedberg-Oldfors C, Hernandez-Lain A, Michel F, Dominguez-Gonzalez C, Viennet G, Akman HO, Kornblum C, Van den Bergh P, Romero NB, Engel AG, DiMauro S, Oldfors A. *Ann Neurol.* 2014 Dec;76(6):891-8. doi: 10.1002/ana.24284. Epub 2014 Oct 31.
- [LC-MS/MS characterization of combined glycogenin-1 and glycogenin-2 enzymatic activities reveals their self-glycosylation preferences.](#) Nilsson J, Halim A, Larsson E, Moslemi AR, Oldfors A, Larson G, Nilsson J. *Biochim Biophys Acta.* 2013 Nov 14;1844(2):398-405. doi: 10.1016/j.bbapap.2013.11.002.
- [Dysregulation of multiple facets of glycogen metabolism in a murine model of pompe](#)

### Application Image

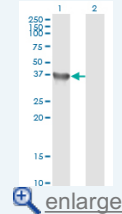
Western Blot (Cell lysate)



Western Blot (Cell lysate)

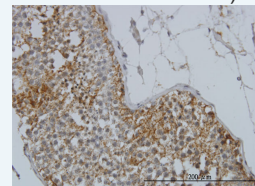


Western Blot (Transfected lysate)

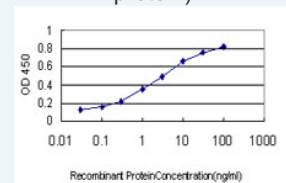


Western Blot (Recombinant protein)

Immunohistochemistry (Formalin/PFA-fixed paraffin-embedded sections)



Sandwich ELISA (Recombinant protein)



ELISA

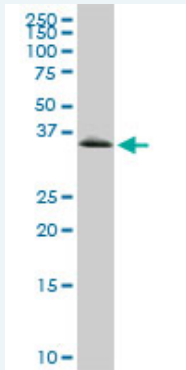
disease.

Taylor KM, Meyers E, Phipps M, Kishnani PS, Cheng SH, Scheule RK, Moreland RJPLoS One. 2013;8(2):e56181. doi: 10.1371/journal.pone.0056181. Epub 2013 Feb 14.

4. Molecular pathogenesis of a new glycogenosis caused by a glycogenin-1 mutation.  
Nilsson J, Halim A, Moslemi AR, Pedersen A, Nilsson J, Larson G, Oldfors A. Biochim Biophys Acta. 2011 Dec 9.

## Applications

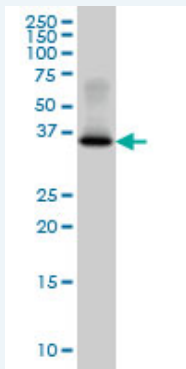
### Western Blot (Cell lysate)



GYG1 monoclonal antibody (M07), clone 3B5. Western Blot analysis of GYG1 expression in PC-12 ( Cat # L012V1 ).

 [Protocol Download](#)

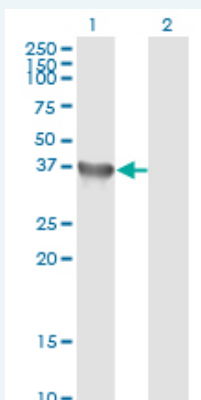
### Western Blot (Cell lysate)



GYG1 monoclonal antibody (M07), clone 3B5 Western Blot analysis of GYG1 expression in HepG2 ( Cat # L019V1 ).

 [Protocol Download](#)

### Western Blot (Transfected lysate)



Western Blot analysis of GYG1 expression in transfected 293T cell line by GYG1 monoclonal antibody (M07), clone 3B5.

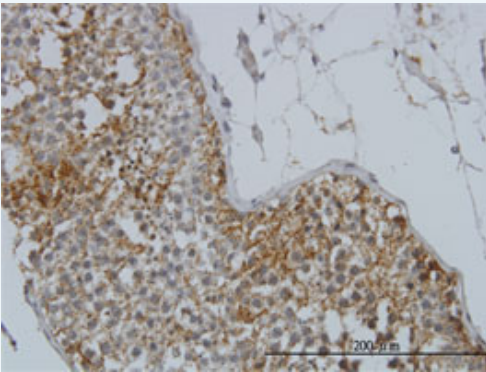
Lane 1: GYG1 transfected lysate(37.5 KDa).

Lane 2: Non-transfected lysate.

 [Protocol Download](#)

### Western Blot (Recombinant protein)

### Immunohistochemistry (Formalin/PFA-fixed paraffin-embedded sections)

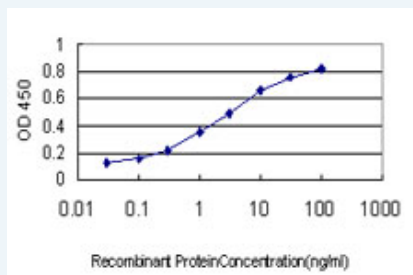


 enlarge this image

Immunoperoxidase of monoclonal antibody to GYG1 on formalin-fixed paraffin-embedded human testis. [antibody concentration 3 ug/ml]

 Protocol Download

### Sandwich ELISA (Recombinant protein)



Detection limit for recombinant GST tagged GYG1 is approximately 0.03ng/ml as a capture antibody.

 Protocol Download

### ELISA

#### Gene Information

Entrez GeneID: [2992](#)

GeneBank Accession#: [NM\\_004130](#)

Protein Accession#: [NP\\_004121](#)

Gene Name: GYG1

Gene Alias: GYG

Gene Description: glycogenin 1

Omim ID: [603942](#)

Gene Ontology: [Hyperlink](#)

Other Designations: glycogenin