



SZABO SCANDIC

Part of Europa Biosite

Produktinformation



Forschungsprodukte & Biochemikalien



Zellkultur & Verbrauchsmaterial



Diagnostik & molekulare Diagnostik



Laborgeräte & Service

Weitere Information auf den folgenden Seiten!
See the following pages for more information!



Lieferung & Zahlungsart

siehe unsere [Liefer- und Versandbedingungen](#)

Zuschläge

- Mindermengenzuschlag
- Trockeneiszuschlag
- Gefahrgutzuschlag
- Expressversand

SZABO-SCANDIC HandelsgmbH

Quellenstraße 110, A-1100 Wien

T. +43(0)1 489 3961-0

F. +43(0)1 489 3961-7

mail@szabo-scandic.com

www.szabo-scandic.com

[linkedin.com/company/szaboscandic](https://www.linkedin.com/company/szaboscandic) 

GYPC 293T Cell Transient Overexpression Lysate(Denatured)

Catalog # : H00002995-T01

規格 : [100 uL]

List All

Specification

Transfected Cell Line: 293T

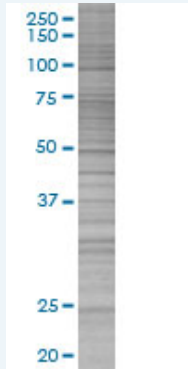
Plasmid: pCMV-GYPC full-length

Host: Human

Theoretical MW (kDa): 14.19

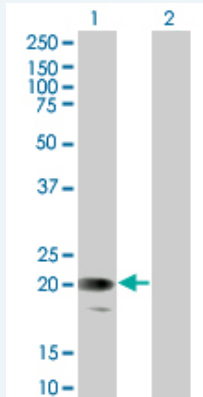
Quality Control Testing: Transient overexpression cell lysate was tested with Anti-GYPC antibody (H00002995-B01) by Western Blots.

SDS-PAGE Gel



GYPC transfected lysate.

Western Blot



Lane 1: GYPC transfected lysate (14.19 KDa)

Lane 2: Non-transfected lysate.

Storage Buffer: 1X Sample Buffer (50 mM Tris-HCl, 2% SDS, 10% glycerol, 300 mM 2-mercaptoethanol, 0.01% Bromophenol blue)

Storage Instruction: Store at -80°C. Aliquot to avoid repeated freezing and thawing.

MSDS:  [Download](#)

Applications

Western Blot

Gene Information

Entrez GeneID: [2995](#)

GeneBank Accession#: [NM_002101.3](#)

Protein Accession#: =

Gene Name: GYPC

Gene Alias: CD236,CD236R,GE,GPC,GYPD,MGC117309,MGC126191,MGC126192

Gene Description: glycophorin C (Gerbich blood group)

Omim ID: [110750](#), [611162](#)

Gene Ontology: [Hyperlink](#)

Gene Summary: Glycophorin C (GYPC) is an integral membrane glycoprotein. It is a minor species carried by human erythrocytes, but plays an important role in regulating the mechanical stability of red cells. A number of glycophorin C mutations have been described. The Gerbich and Yus phenotypes are due to deletion of exon 3 and 2, respectively. The Webb and Duch antigens, also known as glycophorin D, result from single point mutations of the glycophorin C gene. The glycophorin C protein has very little homology with glycophorins A and B. [provided by RefSeq]

Other Designations: glycophorin C