



SZABO SCANDIC

Part of Europa Biosite

Produktinformation



Forschungsprodukte & Biochemikalien



Zellkultur & Verbrauchsmaterial



Diagnostik & molekulare Diagnostik



Laborgeräte & Service

Weitere Information auf den folgenden Seiten!
See the following pages for more information!



Lieferung & Zahlungsart

siehe unsere [Liefer- und Versandbedingungen](#)

Zuschläge

- Mindermengenzuschlag
- Trockeneiszuschlag
- Gefahrgutzuschlag
- Expressversand

SZABO-SCANDIC HandelsgmbH

Quellenstraße 110, A-1100 Wien

T. +43(0)1 489 3961-0

F. +43(0)1 489 3961-7

mail@szabo-scandic.com

www.szabo-scandic.com

[linkedin.com/company/szaboscandic](https://www.linkedin.com/company/szaboscandic) 

GYS2 monoclonal antibody (M06), clone 8H3

Catalog # : H00002998-M06

規格 : [100 ug]

List All

Specification

Product Description: Mouse monoclonal antibody raised against a partial recombinant GYS2.

Immunogen: GYS2 (NP_068776.1, 1 a.a. ~ 100 a.a) partial recombinant protein with GST tag. MW of the GST tag alone is 26 KDa.

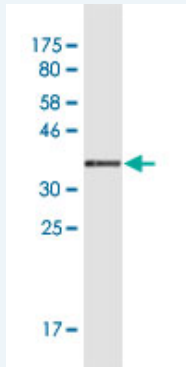
Sequence: MLRGRSLSVTSLGGLPQWEVEELPVEELLLFEVAWEVTNKVGGIYTVIQ
TKAKTTADEWGENYFLIGPYFEHNMKTQVEQCEPVNDAVRRRAVDAMNK
HGC

Host: Mouse

Reactivity: Human

Isotype: IgG2a Kappa

Quality Control Testing: Antibody Reactive Against Recombinant Protein.



Western Blot detection against Immunogen (36.74 KDa) .

Storage Buffer: In 1x PBS, pH 7.4

Storage Instruction: Store at -20°C or lower. Aliquot to avoid repeated freezing and thawing.

MSDS: [Download](#)

Datasheet: [Download](#)

Applications

Western Blot (Recombinant protein)

[Protocol Download](#)

ELISA

Gene Information

Entrez GeneID: [2998](#)

Application Image

Western Blot (Recombinant protein)

ELISA

**GeneBank
Accession#:** [NM_021957](#)

**Protein
Accession#:** [NP_068776.1](#)

Gene Name: GYS2

Gene Alias: -

**Gene
Description:** glycogen synthase 2 (liver)

Omim ID: [138571](#), [240600](#)

Gene Ontology: [Hyperlink](#)

**Other
Designations:** -

Gene Pathway

[Insulin signaling pathway](#) [Starch and sucrose metabolism](#)

Related Disease

[Diabetes Mellitus, Type 2](#) [Drug Toxicity](#) [Edema](#) [Genetic Predisposition to Disease](#)
[Hepatitis, Toxic](#) [Hypercholesterolemia](#) [Psychiatric Status Rating Scales](#) [Schizophrenia](#)
[Tobacco Use Disorder](#)