



SZABO SCANDIC

Part of Europa Biosite

Produktinformation



Forschungsprodukte & Biochemikalien



Zellkultur & Verbrauchsmaterial



Diagnostik & molekulare Diagnostik



Laborgeräte & Service

Weitere Information auf den folgenden Seiten!
See the following pages for more information!



Lieferung & Zahlungsart

siehe unsere [Liefer- und Versandbedingungen](#)

Zuschläge

- Mindermengenzuschlag
- Trockeneiszuschlag
- Gefahrgutzuschlag
- Expressversand

SZABO-SCANDIC HandelsgmbH

Quellenstraße 110, A-1100 Wien

T. +43(0)1 489 3961-0

F. +43(0)1 489 3961-7

mail@szabo-scandic.com

www.szabo-scandic.com

[linkedin.com/company/szaboscandic](https://www.linkedin.com/company/szaboscandic) 

GZMH MaxPab mouse polyclonal antibody (B02) MaxPab®

Catalog # : H00002999-B02

規格 : [50 uL]

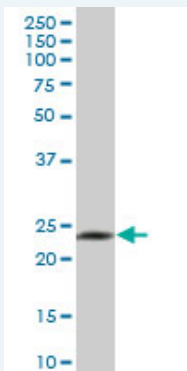
[List All](#)

Specification

Product Description:	Mouse polyclonal antibody raised against a full-length human GZMH protein.
Immunogen:	GZMH (NP_219491, 1 a.a. ~ 246 a.a) full-length human protein.
Sequence:	MQPFLLLAFLLTPGAGTEEIIGGHEAKPHSRPYMAFVQFLQEKSRRKRC GGILVRKDFVLTAAHCQGSSINVTLGAHNIKEQERTQQFIPVKRPIHPAY NPKNFSNDIMLLQLERKAKWTTAVRPLRLPSSKAQVKPGQLCSVAGWG YVSMSTLATTLQEVLLTVQKDCQERLFHGNYSRATEICVGDPKKTQTG FKGDSGGPLVCKDVAQGILSYGNKKGTPPGVYIKVSHFLPWIKRTMKRL
Host:	Mouse
Reactivity:	Human
Quality Control Testing:	Antibody reactive against mammalian transfected lysate.
Storage Buffer:	No additive
Storage Instruction:	Store at -20°C or lower. Aliquot to avoid repeated freezing and thawing.
Note:	For IHC and IF applications, antibody purification with Protein A will be needed prior to use.
MSDS:	Download
Datasheet:	Download

Applications

Western Blot (Tissue lysate)



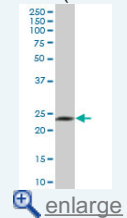
GZMH MaxPab polyclonal antibody. Western Blot analysis of GZMH expression in human spleen.

[Protocol Download](#)

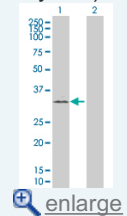
Western Blot (Transfected lysate)

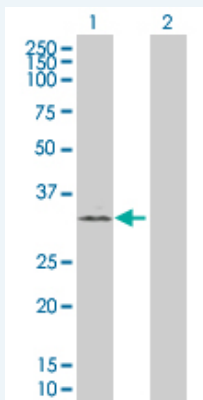
Application Image

Western Blot (Tissue lysate)




Western Blot (Transfected lysate)





Western Blot analysis of GZMH expression in transfected 293T cell line ([H00002999-T02](#)) by GZMH MaxPab polyclonal antibody.

Lane 1: GZMH transfected lysate(27.06 KDa).
Lane 2: Non-transfected lysate.

 [Protocol Download](#)

Gene Information

Entrez GeneID: [2999](#)

GeneBank Accession#: [NM_033423](#)

Protein Accession#: [NP_219491](#)

Gene Name: GZMH

Gene Alias: CCP-X,CGL-2,CSP-C,CTLA1,CTSGL2

Gene Description: granzyme H (cathepsin G-like 2, protein h-CCPX)

Omim ID: [116831](#)

Gene Ontology: [Hyperlink](#)

Other Designations: cytotoxic T-lymphocyte-associated serine esterase 1,cytotoxin serine protease-C,granzyme H

Related Disease

[Cardiovascular Diseases](#) [Diabetes Mellitus, Type 2](#) [Edema](#)