



SZABO SCANDIC

Part of Europa Biosite

Produktinformation



Forschungsprodukte & Biochemikalien



Zellkultur & Verbrauchsmaterial



Diagnostik & molekulare Diagnostik



Laborgeräte & Service

Weitere Information auf den folgenden Seiten!
See the following pages for more information!



Lieferung & Zahlungsart

siehe unsere [Liefer- und Versandbedingungen](#)

Zuschläge

- Mindermengenzuschlag
- Trockeneiszuschlag
- Gefahrgutzuschlag
- Expressversand

SZABO-SCANDIC HandelsgmbH

Quellenstraße 110, A-1100 Wien

T. +43(0)1 489 3961-0

F. +43(0)1 489 3961-7

mail@szabo-scandic.com

www.szabo-scandic.com

[linkedin.com/company/szaboscandic](https://www.linkedin.com/company/szaboscandic) 

GUCY2D monoclonal antibody (M01), clone 4E12

Catalog # : H00003000-M01

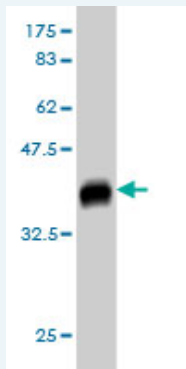
規格 : [100 ug]

[List All](#)

Specification

Product Description:	Mouse monoclonal antibody raised against a partial recombinant GUCY2D.
Immunogen:	GUCY2D (NP_000171, 521 a.a. ~ 630 a.a) partial recombinant protein with GST tag. MW of the GST tag alone is 26 KDa.
Sequence:	RKVAQGSRSSLGARSMSDIRSGPSQHLDSPNIGVYEGDRVWLKFPGD QHAIARPATKTAFSKLQELRHENVALYLGLFLARGAEGPAALWEGNLAVV SEHCTRGLSLQDL
Host:	Mouse
Reactivity:	Human
Isotype:	IgG1 Kappa

Quality Control Testing: Antibody Reactive Against Recombinant Protein.



Western Blot detection against Immunogen (37.73 KDa) .

Storage Buffer: In 1x PBS, pH 7.4

Storage Instruction: Store at -20°C or lower. Aliquot to avoid repeated freezing and thawing.

MSDS: [Download](#)

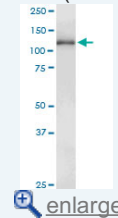
Datasheet: [Download](#)

Applications

Western Blot (Tissue lysate)

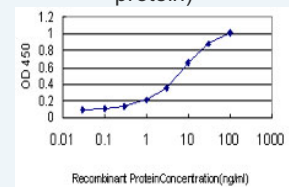
Application Image

Western Blot (Tissue lysate)

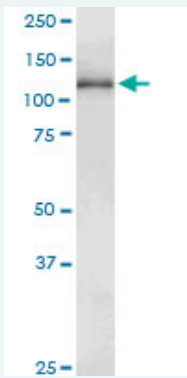


Western Blot (Recombinant protein)

Sandwich ELISA (Recombinant protein)



ELISA



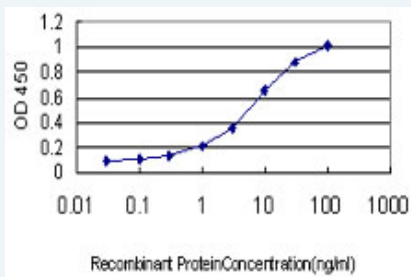
GUCY2D monoclonal antibody (M01), clone 4E12. Western Blot analysis of GUCY2D expression in human spleen.

[Protocol Download](#)

Western Blot (Recombinant protein)

[Protocol Download](#)

Sandwich ELISA (Recombinant protein)



Detection limit for recombinant GST tagged GUCY2D is approximately 0.1ng/ml as a capture antibody.

[Protocol Download](#)

ELISA

Gene Information

Entrez GeneID: [3000](#)

GeneBank Accession#: [NM_000180](#)

Protein Accession#: [NP_000171](#)

Gene Name: GUCY2D

Gene Alias: CORD5, CORD6, CYGD, GUC1A4, GUC2D, LCA, LCA1, RETGC-1, ROS-GC1, retGC

Gene Description: guanylate cyclase 2D, membrane (retina-specific)

Omim ID: [204000](#), [600179](#), [600977](#), [601777](#)

Gene Ontology: [Hyperlink](#)

Gene Summary: This gene encodes a retina-specific guanylate cyclase, which is a member of the membrane guanylyl cyclase family. Like other membrane guanylyl cyclases, this enzyme has a hydrophobic amino-terminal signal sequence followed by a large extracellular domain, a single membrane spanning domain, a kinase homology domain, and a guanylyl cyclase catalytic domain. In contrast to other membrane guanylyl cyclases, this enzyme is not activated by natriuretic peptides. Mutations in this gene result in Leber congenital amaurosis and cone-rod dystrophy-6

diseases. [provided by RefSeq]

Other -
Designations:

Gene Pathway

[Olfactory transduction](#) [Purine metabolism](#)

Related Disease

[Adenocarcinoma](#) [Blindness](#) [Esophageal Neoplasms](#) [Optic Atrophy, Hereditary](#), [Leber](#)
[Retinal Degeneration](#) [Retinal Diseases](#)

[服務條款](#) | [隱私權政策](#) | [著作及商標](#) | [網站地圖](#)

©2016 亞諾法生技股份有限公司 Abnova Corporation. 版權所有.