



SZABO SCANDIC

Part of Europa Biosite

Produktinformation



Forschungsprodukte & Biochemikalien



Zellkultur & Verbrauchsmaterial



Diagnostik & molekulare Diagnostik



Laborgeräte & Service

Weitere Information auf den folgenden Seiten!
See the following pages for more information!



Lieferung & Zahlungsart

siehe unsere [Liefer- und Versandbedingungen](#)

Zuschläge

- Mindermengenzuschlag
- Trockeneiszuschlag
- Gefahrgutzuschlag
- Expressversand

SZABO-SCANDIC HandelsgmbH

Quellenstraße 110, A-1100 Wien

T. +43(0)1 489 3961-0

F. +43(0)1 489 3961-7

mail@szabo-scandic.com

www.szabo-scandic.com

[linkedin.com/company/szaboscandic](https://www.linkedin.com/company/szaboscandic) 

GUCY2D monoclonal antibody (M08), clone 1F12

Catalog # : H00003000-M08

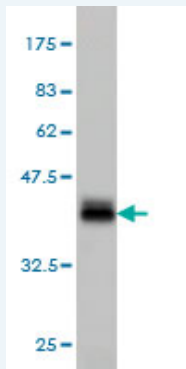
規格 : [100 ug]

[List All](#)

Specification

Product Description:	Mouse monoclonal antibody raised against a partial recombinant GUCY2D.
Immunogen:	GUCY2D (NP_000171, 521 a.a. ~ 630 a.a) partial recombinant protein with GST tag. MW of the GST tag alone is 26 KDa.
Sequence:	RKVAQGSRSSLGARSMSDIRSGPSQHLDSPNIGVYEGDRVWLKKFPGD QHIAIRPATKTAFSKLQELRHENVALYLGLFLARGAEGPAALWEGNLAVV SEHCTRGLSLQDL
Host:	Mouse
Reactivity:	Human
Isotype:	IgG

Quality Control Testing: Antibody Reactive Against Recombinant Protein.



Western Blot detection against Immunogen (37.73 KDa) .

Storage Buffer: In 1x PBS, pH 7.4

Storage Instruction: Store at -20°C or lower. Aliquot to avoid repeated freezing and thawing.

MSDS: [Download](#)

Datasheet: [Download](#)

Applications

Western Blot (Recombinant protein)

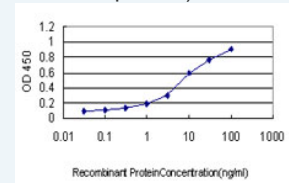
[Protocol Download](#)

Sandwich ELISA (Recombinant protein)

Application Image

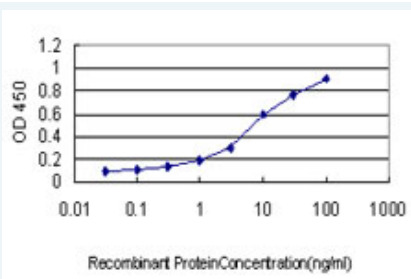
Western Blot (Recombinant protein)

Sandwich ELISA (Recombinant protein)



[enlarge](#)

ELISA



Detection limit for recombinant GST tagged GUCY2D is approximately 0.1ng/ml as a capture antibody.

 [Protocol Download](#)

ELISA

Gene Information

Entrez GeneID: [3000](#)

GeneBank [NM_000180](#)

Accession#:

Protein [NP_000171](#)

Accession#:

Gene Name: GUCY2D

Gene Alias: [CORD5](#), [CORD6](#), [CYGD](#), [GUC1A4](#), [GUC2D](#), [LCA](#), [LCA1](#), [RETGC-1](#), [ROS-GC1](#), [retGC](#)

Gene Description: guanylate cyclase 2D, membrane (retina-specific)

Description:

Omim ID: [204000](#), [600179](#), [600977](#), [601777](#)

Gene Ontology: [Hyperlink](#)

Gene Summary: This gene encodes a retina-specific guanylate cyclase, which is a member of the membrane guanylyl cyclase family. Like other membrane guanylyl cyclases, this enzyme has a hydrophobic amino-terminal signal sequence followed by a large extracellular domain, a single membrane spanning domain, a kinase homology domain, and a guanylyl cyclase catalytic domain. In contrast to other membrane guanylyl cyclases, this enzyme is not activated by natriuretic peptides. Mutations in this gene result in Leber congenital amaurosis and cone-rod dystrophy-6 diseases. [provided by RefSeq]

Other Designations: -

Gene Pathway

[Olfactory transduction](#) [Purine metabolism](#)

Related Disease

[Adenocarcinoma](#) [Blindness](#) [Esophageal Neoplasms](#) [Optic Atrophy](#), [Hereditary](#), [Leber Retinal Degeneration](#) [Retinal Diseases](#)