



# SZABO SCANDIC

Part of Europa Biosite

## Produktinformation



Forschungsprodukte & Biochemikalien



Zellkultur & Verbrauchsmaterial



Diagnostik & molekulare Diagnostik



Laborgeräte & Service

Weitere Information auf den folgenden Seiten!  
See the following pages for more information!



### Lieferung & Zahlungsart

siehe unsere [Liefer- und Versandbedingungen](#)

### Zuschläge

- Mindermengenzuschlag
- Trockeneiszuschlag
- Gefahrgutzuschlag
- Expressversand

### SZABO-SCANDIC HandelsgmbH

Quellenstraße 110, A-1100 Wien

T. +43(0)1 489 3961-0

F. +43(0)1 489 3961-7

[mail@szabo-scandic.com](mailto:mail@szabo-scandic.com)

[www.szabo-scandic.com](http://www.szabo-scandic.com)

[linkedin.com/company/szaboscandic](https://www.linkedin.com/company/szaboscandic) 

## GZMA monoclonal antibody (M01), clone 4C6

Catalog # : H00003001-M01

規格 : [ 100 ug ]

[List All](#)

### Specification

**Product Description:** Mouse monoclonal antibody raised against a partial recombinant GZMA.

**Immunogen:** GZMA (NP\_006135.1, 41 a.a. ~ 141 a.a) partial recombinant protein with GST tag. MW of the GST tag alone is 26 KDa.

**Sequence:** PYMVLVSLDRKTCAGALIAKDWLTAHCNLNKRSQVILGAHSITREPT  
KQIMLVKKEFPYPCYDPATREGDLKLLQLTEKAKINKYVTILHLPKKGDD

**Host:** Mouse

**Reactivity:** Human

**Isotype:** IgG2a Kappa

**Quality Control Testing:** Antibody Reactive Against Recombinant Protein.

**Storage Buffer:** In 1x PBS, pH 7.4

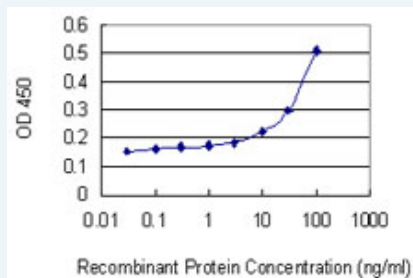
**Storage Instruction:** Store at -20°C or lower. Aliquot to avoid repeated freezing and thawing.

**MSDS:**  [Download](#)

**Datasheet:**  [Download](#)

### Applications

#### Sandwich ELISA (Recombinant protein)



Detection limit for recombinant GST tagged GZMA is 3 ng/ml as a capture antibody.

 [Protocol Download](#)

ELISA

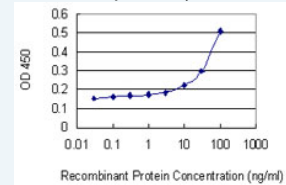
### Gene Information


**Entrez GeneID:** [3001](#)

**GeneBank Accession#:** [NM\\_006144](#)

### Application Image

Sandwich ELISA (Recombinant protein)



 [enlarge](#)

ELISA

**Protein** [NP\\_006135.1](#)

**Accession#:**

**Gene Name:** GZMA

**Gene Alias:** CTLA3,HFSP

**Gene Description:** granzyme A (granzyme 1, cytotoxic T-lymphocyte-associated serine esterase 3)

**Omim ID:** [140050](#)

**Gene Ontology:** [Hyperlink](#)

**Gene Summary:** Cytolytic T lymphocytes (CTL) and natural killer (NK) cells share the remarkable ability to recognize, bind, and lyse specific target cells. They are thought to protect their host by lysing cells bearing on their surface 'nonself' antigens, usually peptides or proteins resulting from infection by intracellular pathogens. The protein described here is a T cell- and natural killer cell-specific serine protease that may function as a common component necessary for lysis of target cells by cytotoxic T lymphocytes and natural killer cells. [provided by RefSeq]

**Other Designations:** CTL tryptase,Granzyme A (Cytotoxic T-lymphocyte-associated serine esterase-3; Hanukah factor serine protease),granzyme A

#### **Gene Pathway**

[Neuroactive ligand-receptor interaction](#)

#### **Related Disease**

[Asthma](#) [Asthma](#) [Bronchiolitis](#), [Viral Genetic Predisposition to Disease](#)  
[Infant, Premature, Diseases](#) [Respiratory Syncytial Virus Infections](#)