



# SZABO SCANDIC

Part of Europa Biosite

## Produktinformation



Forschungsprodukte & Biochemikalien



Zellkultur & Verbrauchsmaterial



Diagnostik & molekulare Diagnostik



Laborgeräte & Service

Weitere Information auf den folgenden Seiten!  
See the following pages for more information!



### Lieferung & Zahlungsart

siehe unsere [Liefer- und Versandbedingungen](#)

### Zuschläge

- Mindermengenzuschlag
- Trockeneiszuschlag
- Gefahrgutzuschlag
- Expressversand

### SZABO-SCANDIC HandelsgmbH

Quellenstraße 110, A-1100 Wien

T. +43(0)1 489 3961-0

F. +43(0)1 489 3961-7

[mail@szabo-scandic.com](mailto:mail@szabo-scandic.com)

[www.szabo-scandic.com](http://www.szabo-scandic.com)

[linkedin.com/company/szaboscandic](https://www.linkedin.com/company/szaboscandic) 



## GZMB purified MaxPab mouse polyclonal antibody (B03P) MaxPab®

Catalog # : H00003002-B03P

規格 : [ 50 ug ]

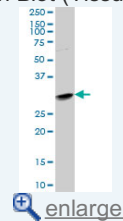
[List All](#)

### Specification

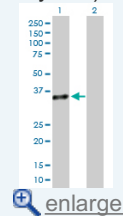
<b>Product Description:</b>	Mouse polyclonal antibody raised against a full-length human GZMB protein.
<b>Immunogen:</b>	GZMB (AAH30195.1, 1 a.a. ~ 247 a.a) full-length human protein.
<b>Sequence:</b>	MQPILLLLAFLLLPADAGEIIGGHEAKPHSRPYMAYLMWWDQKSLKRCG GFLIQDDFVLTAHCWGSSINVTLAGAHNIKEQEPTQQFIPVKRPIHPAYN PKNFSNDIMLLQLERKAKRTRAVQPLRLPSNKAQVKPGQTCSVAGWGQ TAPLGKHSHTLQEVKMTVQEDRKCESDLRHYDSTIELCVGDPEIKKTSF KGDSSGGLVNCNKAQGVSYGRNNGMPRACTKVSSVFHWIKKTMKRH
<b>Host:</b>	Mouse
<b>Reactivity:</b>	Human
<b>Quality Control Testing:</b>	Antibody reactive against mammalian transfected lysate.
<b>Storage Buffer:</b>	In 1x PBS, pH 7.4
<b>Storage Instruction:</b>	Store at -20°C or lower. Aliquot to avoid repeated freezing and thawing.
<b>MSDS:</b>	 <a href="#">Download</a>
<b>Datasheet:</b>	 <a href="#">Download</a>

### Application Image

Western Blot (Tissue lysate)

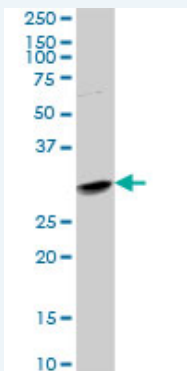


Western Blot (Transfected lysate)



### Applications

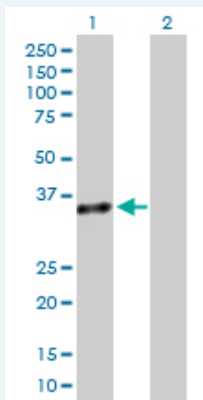
Western Blot (Tissue lysate)



GZMB MaxPab polyclonal antibody. Western Blot analysis of GZMB expression in human spleen.

 [Protocol Download](#)


Western Blot (Transfected lysate)



Western Blot analysis of GZMB expression in transfected 293T cell line ([H00003002-T02](#)) by GZMB MaxPab polyclonal antibody.

Lane 1: GZMB transfected lysate(27.17 KDa).

Lane 2: Non-transfected lysate.

 [Protocol Download](#)

## Gene Information

**Entrez GeneID:** [3002](#)

**GeneBank** [BC030195.1](#)

**Accession#:**

**Protein** [AAH30195.1](#)

**Accession#:**

**Gene Name:** GZMB

**Gene Alias:** CCPI,CGL-1,CGL1,CSP-B,CSPB,CTLA1,CTSG1,HLP,SECT

**Gene Description:** granzyme B (granzyme 2, cytotoxic T-lymphocyte-associated serine esterase 1)

**Omim ID:** [123910](#)

**Gene Ontology:** [Hyperlink](#)

**Gene Summary:** Cytolytic T lymphocytes (CTL) and natural killer (NK) cells share the remarkable ability to recognize, bind, and lyse specific target cells. They are thought to protect their host by lysing cells bearing on their surface 'nonself' antigens, usually peptides or proteins resulting from infection by intracellular pathogens. The protein encoded by this gene is crucial for the rapid induction of target cell apoptosis by CTL in cell-mediated immune response. [provided by RefSeq]

**Other Designations:** T-cell serine protease 1-3E,cathepsin G-like 1,cytotoxic serine protease B,fragmentin 2,granzyme B

## Gene Pathway

[Allograft rejection](#) [Autoimmune thyroid disease](#) [Graft-versus-host disease](#)  
[Natural killer cell mediated cytotoxicity](#) [Type I diabetes mellitus](#)

## Related Disease

[Arthritis, Juvenile Rheumatoid](#) [Asthma](#) [Asthma](#) [Autoimmune Diseases](#) [Behcet Syndrome](#)  
[Breast cancer](#) [Breast Neoplasms](#) [Bronchiolitis, Viral](#) [Genetic Predisposition to Disease](#)  
[Infant, Premature, Diseases](#) [Leukemia, chronic myeloid](#)  
[Leukemia, Myelogenous, Chronic, BCR-ABL Positive](#)  
[Lymphohistiocytosis, Hemophagocytic](#) [Melanoma](#) [Neovascularization, Pathologic](#)  
[Respiratory Syncytial Virus Infections](#) [Vitiligo](#)

