



SZABO SCANDIC

Part of Europa Biosite

Produktinformation



Forschungsprodukte & Biochemikalien



Zellkultur & Verbrauchsmaterial



Diagnostik & molekulare Diagnostik



Laborgeräte & Service

Weitere Information auf den folgenden Seiten!
See the following pages for more information!



Lieferung & Zahlungsart

siehe unsere [Liefer- und Versandbedingungen](#)

Zuschläge

- Mindermengenzuschlag
- Trockeneiszuschlag
- Gefahrgutzuschlag
- Expressversand

SZABO-SCANDIC HandelsgmbH

Quellenstraße 110, A-1100 Wien

T. +43(0)1 489 3961-0

F. +43(0)1 489 3961-7

mail@szabo-scandic.com

www.szabo-scandic.com

[linkedin.com/company/szaboscandic](https://www.linkedin.com/company/szaboscandic) 



GZMB purified MaxPab rabbit polyclonal antibody (D01P) MaxPab®

Catalog # : H00003002-D01P

規格 : [100 ug]

List All

Specification

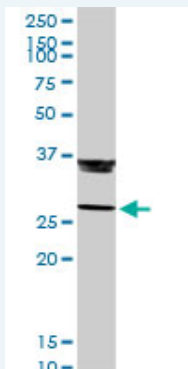
Product Description:	Rabbit polyclonal antibody raised against a full-length human GZMB protein.
Immunogen:	GZMB (AAH30195.1, 1 a.a. ~ 247 a.a) full-length human protein.
Sequence:	MQPILLLLAFLLLPRADAGEIIGGHEAKPHSRPYMAYLMWWDQKSLKRCG GFLIQDDFVLTAAHCWGSSINVTLAGAHNIKEQEPTQQFIPVKRPIHPAYN PKNFSNDIMLLQLERKAKRTRAVQPLRLPSNKAQVKPGQTCVAGWGQ TAPLGKHSHTLQEVKMTVQEDRKCESDLRHYDSTIELCVGDPEIKKTSF KGDGSGPLVCNKVAQGIVSYGRNNGMPRACTKVSSFVHWIKKTMKRH
Host:	Rabbit
Reactivity:	Human, Mouse
Quality Control Testing:	Antibody reactive against mammalian transfected lysate.
Storage Buffer:	In 1x PBS, pH 7.4
Storage Instruction:	Store at -20°C or lower. Aliquot to avoid repeated freezing and thawing.
MSDS:	 Download
Datasheet:	 Download

Publication Reference


1. [Granzyme B is a novel interleukin-18 converting enzyme.](#)
Omoto Y, Yamanaka K, Tokime K, Kitano S, Kakeda M, Akeda T, Kurokawa I, Gabazza EC, Tsutsui H, Katayama N, Yamanishi K, Nakanishi K, Mizutani H.J Dermatol Sci. 2010 Jun 17. [Epub ahead of print]

Applications

Western Blot (Tissue lysate)

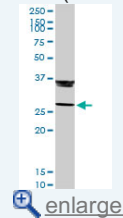


GZMB MaxPab rabbit polyclonal antibody. Western Blot analysis of GZMB expression in human liver.

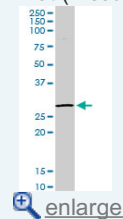
 [Protocol Download](#)

Application Image

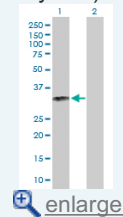
Western Blot (Tissue lysate)



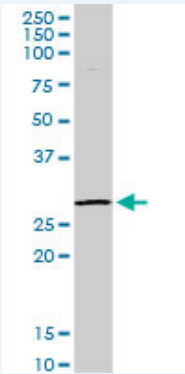
Western Blot (Tissue lysate)



Western Blot (Transfected lysate)



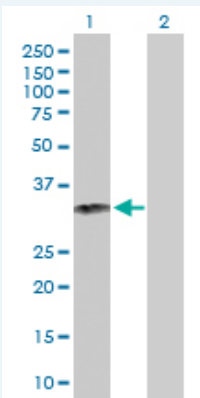
Western Blot (Tissue lysate)



GZMB MaxPab rabbit polyclonal antibody. Western Blot analysis of GZMB expression in mouse kidney.

 [Protocol Download](#)

Western Blot (Transfected lysate)



Western Blot analysis of GZMB expression in transfected 293T cell line ([H00003002-T03](#)) by GZMB MaxPab polyclonal antibody.

Lane 1: GZMB transfected lysate(27.70 KDa).

Lane 2: Non-transfected lysate.

 [Protocol Download](#)

Gene Information

Entrez GeneID: [3002](#)

GeneBank [BC030195](#)

Accession#:

Protein [AAH30195.1](#)

Accession#:

Gene Name: GZMB

Gene Alias: CCPI,CGL-1,CGL1,CSP-B,CSPB,CTLA1,CTSG1,HLP,SECT

Gene Description: granzyme B (granzyme 2, cytotoxic T-lymphocyte-associated serine esterase 1)

Omim ID: [123910](#)

Gene Ontology: [Hyperlink](#)

Gene Summary: Cytolytic T lymphocytes (CTL) and natural killer (NK) cells share the remarkable ability to recognize, bind, and lyse specific target cells. They are thought to protect their host by lysing cells bearing on their surface 'nonself' antigens, usually peptides or proteins resulting from infection by intracellular pathogens. The protein encoded by this gene is crucial for the rapid induction of target cell apoptosis by CTL in cell-mediated

immune response. [provided by RefSeq]

Other T-cell serine protease 1-3E,cathepsin G-like 1,cytotoxic serine protease
Designations: B,fragmentin 2,granzyme B

Gene Pathway

[Allograft rejection](#) [Autoimmune thyroid disease](#) [Graft-versus-host disease](#)
[Natural killer cell mediated cytotoxicity](#) [Type I diabetes mellitus](#)

Related Disease

[Arthritis, Juvenile Rheumatoid](#) [Asthma](#) [Asthma](#) [Autoimmune Diseases](#) [Behcet Syndrome](#)
[Breast cancer](#) [Breast Neoplasms](#) [Bronchiolitis, Viral](#) [Genetic Predisposition to Disease](#)
[Infant, Premature, Diseases](#) [Leukemia, chronic myeloid](#)
[Leukemia, Myelogenous, Chronic, BCR-ABL Positive](#)
[Lymphohistiocytosis, Hemophagocytic](#) [Melanoma](#) [Neovascularization, Pathologic](#)
[Respiratory Syncytial Virus Infections](#) [Vitiligo](#)

[服務條款](#) | [隱私權政策](#) | [著作及商標](#) | [網站地圖](#)

©2016 亞諾法生技股份有限公司 Abnova Corporation. 版權所有.