



# SZABO SCANDIC

Part of Europa Biosite

## Produktinformation



Forschungsprodukte & Biochemikalien



Zellkultur & Verbrauchsmaterial



Diagnostik & molekulare Diagnostik



Laborgeräte & Service

Weitere Information auf den folgenden Seiten!  
See the following pages for more information!



### Lieferung & Zahlungsart

siehe unsere [Liefer- und Versandbedingungen](#)

### Zuschläge

- Mindermengenzuschlag
- Trockeneiszuschlag
- Gefahrgutzuschlag
- Expressversand

### SZABO-SCANDIC HandelsgmbH

Quellenstraße 110, A-1100 Wien

T. +43(0)1 489 3961-0

F. +43(0)1 489 3961-7

[mail@szabo-scandic.com](mailto:mail@szabo-scandic.com)

[www.szabo-scandic.com](http://www.szabo-scandic.com)

[linkedin.com/company/szaboscandic](https://www.linkedin.com/company/szaboscandic) 

## GZMB (Human) IP-WB Antibody Pair

Catalog # : H00003002-PW2

規格 : [ 1 Set ]

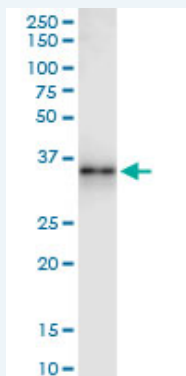
[List All](#)

### Specification

**Product Description:** This IP-WB antibody pair set comes with one antibody for immunoprecipitation and another to detect the precipitated protein in western blot.

**Reactivity:** Human

**Quality Control Testing:** Immunoprecipitation-Western Blot (IP-WB)



Immunoprecipitation of GZMB transfected lysate using rabbit polyclonal anti-GZMB and Protein A Magnetic Bead ([U0007](#)), and immunoblotted with mouse polyclonal anti-GZMB.

**Supplied Product:** Antibody pair set content:  
1. Antibody pair for IP: rabbit polyclonal anti-GZMB (300 ul)  
2. Antibody pair for WB: mouse polyclonal anti-GZMB (50 ul)

**Storage Instruction:** Store reagents of the antibody pair set at -20°C or lower. Please aliquot to avoid repeated freeze thaw cycle. Reagents should be returned to -20°C storage immediately after use.

**MSDS:**  [Download](#)

### Applications

**Immunoprecipitation-Western Blot**

 [Protocol Download](#)

### Gene Information

**Entrez GeneID:** [3002](#)

**Gene Name:** GZMB

**Gene Alias:** CCPI,CGL-1,CGL1,CSP-B,CSPB,CTLA1,CTSG1,HLP,SECT

**Gene Description:** granzyme B (granzyme 2, cytotoxic T-lymphocyte-associated serine esterase 1)

**Omim ID:** [123910](#)

**Gene Ontology:** [Hyperlink](#)

### Application Image

Immunoprecipitation-Western Blot

---

**Gene Summary:** Cytolytic T lymphocytes (CTL) and natural killer (NK) cells share the remarkable ability to recognize, bind, and lyse specific target cells. They are thought to protect their host by lysing cells bearing on their surface 'nonself' antigens, usually peptides or proteins resulting from infection by intracellular pathogens. The protein encoded by this gene is crucial for the rapid induction of target cell apoptosis by CTL in cell-mediated immune response. [provided by RefSeq]

---

**Other Designations:** T-cell serine protease 1-3E, cathepsin G-like 1, cytotoxic serine protease B, fragmentin 2, granzyme B

---

### Gene Pathway

---

[Allograft rejection](#) [Autoimmune thyroid disease](#) [Graft-versus-host disease](#)  
[Natural killer cell mediated cytotoxicity](#) [Type I diabetes mellitus](#)

### Related Disease

---

[Arthritis, Juvenile Rheumatoid](#) [Asthma](#) [Asthma](#) [Autoimmune Diseases](#) [Behcet Syndrome](#)  
[Breast cancer](#) [Breast Neoplasms](#) [Bronchiolitis, Viral](#) [Genetic Predisposition to Disease](#)  
[Infant, Premature, Diseases](#) [Leukemia, chronic myeloid](#)  
[Leukemia, Myelogenous, Chronic, BCR-ABL Positive](#)  
[Lymphohistiocytosis, Hemophagocytic](#) [Melanoma](#) [Neovascularization, Pathologic](#)  
[Respiratory Syncytial Virus Infections](#) [Vitiligo](#)

---

[服務條款](#) | [隱私權政策](#) | [著作及商標](#) | [網站地圖](#)

©2016 亞諾法生技股份有限公司 Abnova Corporation. 版權所有.