



# SZABO SCANDIC

Part of Europa Biosite

## Produktinformation



Forschungsprodukte & Biochemikalien



Zellkultur & Verbrauchsmaterial



Diagnostik & molekulare Diagnostik



Laborgeräte & Service

Weitere Information auf den folgenden Seiten!  
See the following pages for more information!



### Lieferung & Zahlungsart

siehe unsere [Liefer- und Versandbedingungen](#)

### Zuschläge

- Mindermengenzuschlag
- Trockeneiszuschlag
- Gefahrgutzuschlag
- Expressversand

### SZABO-SCANDIC HandelsgmbH

Quellenstraße 110, A-1100 Wien

T. +43(0)1 489 3961-0

F. +43(0)1 489 3961-7

[mail@szabo-scandic.com](mailto:mail@szabo-scandic.com)

[www.szabo-scandic.com](http://www.szabo-scandic.com)

[linkedin.com/company/szaboscandic](https://www.linkedin.com/company/szaboscandic) 

## GZMB 293T Cell Transient Overexpression Lysate(Denatured)

Catalog # : H00003002-T02

規格 : [ 100 uL ]

List All

### Specification

**Transfected Cell Line:** 293T

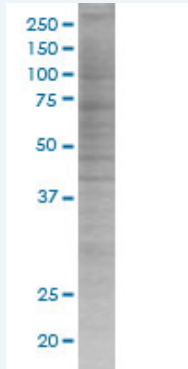
**Plasmid:** pCMV-GZMB full-length

**Host:** Human

**Theoretical MW (kDa):** 27.28

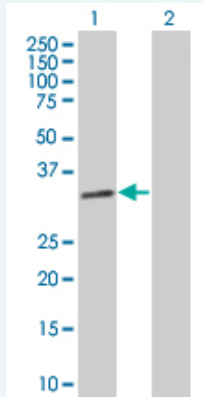
**Quality Control Testing:** Transient overexpression cell lysate was tested with Anti-GZMB antibody ([H00003002-B02](#)) by Western Blots.

#### SDS-PAGE Gel



GZMB transfected lysate.

#### Western Blot



Lane 1: GZMB transfected lysate ( 27.28 KDa)

Lane 2: Non-transfected lysate.

**Storage Buffer:** 1X Sample Buffer (50 mM Tris-HCl, 2% SDS, 10% glycerol, 300 mM 2-mercaptoethanol, 0.01% Bromophenol blue)

**Storage Instruction:** Store at -80°C. Aliquot to avoid repeated freezing and thawing.

**MSDS:**  [Download](#)

### Applications

### Application Image

Western Blot

## Western Blot

### Gene Information

Entrez GeneID: [3002](#)

GeneBank [BC030195](#)  
Accession#:

Protein [AAH30195](#)  
Accession#:

Gene Name: GZMB

Gene Alias: CCPI,CGL-1,CGL1,CSP-B,CSPB,CTLA1,CTSG1,HLP,SECT

Gene Description: granzyme B (granzyme 2, cytotoxic T-lymphocyte-associated serine esterase 1)

Omim ID: [123910](#)

Gene Ontology: [Hyperlink](#)

**Gene Summary:** Cytolytic T lymphocytes (CTL) and natural killer (NK) cells share the remarkable ability to recognize, bind, and lyse specific target cells. They are thought to protect their host by lysing cells bearing on their surface 'nonself' antigens, usually peptides or proteins resulting from infection by intracellular pathogens. The protein encoded by this gene is crucial for the rapid induction of target cell apoptosis by CTL in cell-mediated immune response. [provided by RefSeq]

**Other Designations:** T-cell serine protease 1-3E,cathepsin G-like 1,cytotoxic serine protease B,fragmentin 2,granzyme B

### Gene Pathway

[Allograft rejection](#) [Autoimmune thyroid disease](#) [Graft-versus-host disease](#)  
[Natural killer cell mediated cytotoxicity](#) [Type I diabetes mellitus](#)

### Related Disease

[Arthritis, Juvenile Rheumatoid](#) [Asthma](#) [Asthma](#) [Autoimmune Diseases](#) [Behcet Syndrome](#)  
[Breast cancer](#) [Breast Neoplasms](#) [Bronchiolitis, Viral](#) [Genetic Predisposition to Disease](#)  
[Infant, Premature, Diseases](#) [Leukemia, chronic myeloid](#)  
[Leukemia, Myelogenous, Chronic, BCR-ABL Positive](#)  
[Lymphohistiocytosis, Hemophagocytic](#) [Melanoma](#) [Neovascularization, Pathologic](#)  
[Respiratory Syncytial Virus Infections](#) [Vitiligo](#)

[服務條款](#) | [隱私權政策](#) | [著作及商標](#) | [網站地圖](#)

©2016 亞諾法生技股份有限公司 Abnova Corporation. 版權所有.