



SZABO SCANDIC

Part of Europa Biosite

Produktinformation



Forschungsprodukte & Biochemikalien



Zellkultur & Verbrauchsmaterial



Diagnostik & molekulare Diagnostik



Laborgeräte & Service

Weitere Information auf den folgenden Seiten!
See the following pages for more information!



Lieferung & Zahlungsart

siehe unsere [Liefer- und Versandbedingungen](#)

Zuschläge

- Mindermengenzuschlag
- Trockeneiszuschlag
- Gefahrgutzuschlag
- Expressversand

SZABO-SCANDIC HandelsgmbH

Quellenstraße 110, A-1100 Wien

T. +43(0)1 489 3961-0

F. +43(0)1 489 3961-7

mail@szabo-scandic.com

www.szabo-scandic.com

[linkedin.com/company/szaboscandic](https://www.linkedin.com/company/szaboscandic) 

HBA1 polyclonal antibody (A01)

Catalog # : H00003039-A01

規格 : [50 uL]

List All

Specification

Product Description: Mouse polyclonal antibody raised against a partial recombinant HBA1.

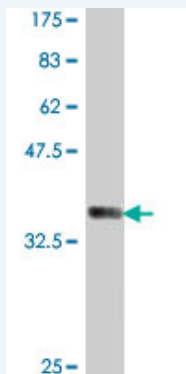
Immunogen: HBA1 (NP_000549, 33 a.a. ~ 142 a.a) partial recombinant protein with GST tag.

Sequence: MFLSFPTTKTYFPHFDLSHGSAQVKGHGKKVADALTNAVAHVDDMPNAL
SALSDLHAHKL RVD PVNFKLLSHCLLVTLAAHLPAEFTPAVHASLDKFLAS
VSTVLTSKYR

Host: Mouse

Reactivity: Human

Quality Control Testing: Antibody Reactive Against Recombinant Protein.



Western Blot detection against Immunogen (38.21 KDa) .

Storage Buffer: 50 % glycerol

Storage Instruction: Store at -20°C or lower. Aliquot to avoid repeated freezing and thawing.

MSDS: [Download](#)

Datasheet: [Download](#)

Applications

Western Blot (Recombinant protein)

[Protocol Download](#)

ELISA

Gene Information

Entrez GeneID: [3039](#)

GeneBank Accession#: [NM_000558](#)

Application Image

Western Blot (Recombinant protein)

ELISA

Protein Accession#: [NP_000549](#)

Gene Name: HBA1

Gene Alias: HBH,HBA-T3

Gene Description: hemoglobin, alpha 1

Omim ID: [141800](#)

Gene Ontology: [Hyperlink](#)

Gene Summary: The human alpha globin gene cluster located on chromosome 16 spans about 30 kb and includes seven loci: 5'- zeta - pseudozeta - mu - pseudoalpha-1 - alpha-2 - alpha-1 - theta - 3'. The alpha-2 (HBA2) and alpha-1 (HBA1) coding sequences are identical. These genes differ slightly over the 5' untranslated regions and the introns, but they differ significantly over the 3' untranslated regions. Two alpha chains plus two beta chains constitute HbA, which in normal adult life comprises about 97% of the total hemoglobin; alpha chains combine with delta chains to constitute HbA-2, which with HbF (fetal hemoglobin) makes up the remaining 3% of adult hemoglobin. Alpha thalassemias result from deletions of each of the alpha genes as well as deletions of both HBA2 and HBA1; some nondeletion alpha thalassemias have also been reported. [provided by RefSeq]

Other Designations: alpha 1 globin,alpha one globin,alpha-1 globin,alpha-1-globin,hemoglobin alpha 1 globin chain,hemoglobin alpha-1 chain

Related Disease

[Abortion](#), [Spontaneous Albuminuria](#) [alpha-Thalassemia](#) [Anemia](#) [Anemia](#), [Aplastic Anemia](#), [Hypochromic Anemia](#), [Sickle Cell Anemia](#), [sickle cell beta-Thalassemia](#) [Dyslipidemias](#) [Fetal Diseases](#) [Genetic Predisposition to Disease](#) [Glucosephosphate Dehydrogenase Deficiency](#) [Hemolysis](#) [Hypertension](#), [Pulmonary Iron Overload](#) [Malaria](#) [Malaria](#), [Cerebral Malaria](#), [Falciparum](#)

... see more