



# SZABO SCANDIC

Part of Europa Biosite

## Produktinformation



Forschungsprodukte & Biochemikalien



Zellkultur & Verbrauchsmaterial



Diagnostik & molekulare Diagnostik



Laborgeräte & Service

Weitere Information auf den folgenden Seiten!  
See the following pages for more information!



### Lieferung & Zahlungsart

siehe unsere [Liefer- und Versandbedingungen](#)

### Zuschläge

- Mindermengenzuschlag
- Trockeneiszuschlag
- Gefahrgutzuschlag
- Expressversand

### SZABO-SCANDIC HandelsgmbH

Quellenstraße 110, A-1100 Wien

T. +43(0)1 489 3961-0

F. +43(0)1 489 3961-7

[mail@szabo-scandic.com](mailto:mail@szabo-scandic.com)

[www.szabo-scandic.com](http://www.szabo-scandic.com)

[linkedin.com/company/szaboscandic](https://www.linkedin.com/company/szaboscandic) 

## HBB monoclonal antibody (M01), clone 2H3

Catalog # : H00003043-M01

規格 : [ 100 ug ]

[List All](#)

### Specification

**Product Description:** Mouse monoclonal antibody raised against a partial recombinant HBB.

**Immunogen:** HBB (AAH07075, 38 a.a. ~ 147 a.a) partial recombinant protein with GST tag. MW of the GST tag alone is 26 KDa.

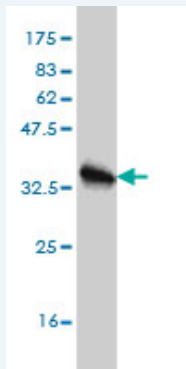
**Sequence:** WTQRRFESFGDLSTPDAVMGNPKVKAHGKKVLGAFSDGLAHLAHLNPKGT  
FATLSELHCDKLVDPENFRLLGNLVLCVLAHFGKEFTPPVQAAAYQKV  
VAGVANALPHKYH

**Host:** Mouse

**Reactivity:** Human

**Isotype:** IgG3 Kappa

**Quality Control Testing:** Antibody Reactive Against Recombinant Protein.



Western Blot detection against Immunogen (37.84 KDa) .

**Storage Buffer:** In 1x PBS, pH 7.4

**Storage Instruction:** Store at -20°C or lower. Aliquot to avoid repeated freezing and thawing.

**MSDS:** [Download](#)

**Datasheet:** [Download](#)

### Publication Reference

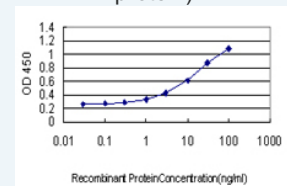
1. [A novel transgenic mouse model produced from lentiviral germline integration for the study of beta-thalassemia gene therapy.](#)  
Li W, Xie S, Guo X, Gong X, Wang S, Lin D, Zhang J, Ren Z, Huang S, Zeng F, Zeng Y. *Haematologica*. 2008 Mar;93(3):356-62. Epub 2008 Feb 11.
2. [Restoration of the balanced {alpha}/{beta}-globin gene expression in {beta}654-thalassemia mice using combined RNAi and antisense RNA approach.](#)  
Xie SY, Ren ZR, Zhang JZ, Guo XB, Wang QX, Wang S, Lin D, Gong XL, Li W, Huang SZ, Zeng F, Zeng YT. *Hum Mol Genet*. 2007 Nov 1;16(21):2616-25. Epub 2007 Aug 22.

### Applications

### Application Image

Western Blot (Recombinant protein)

Sandwich ELISA (Recombinant protein)



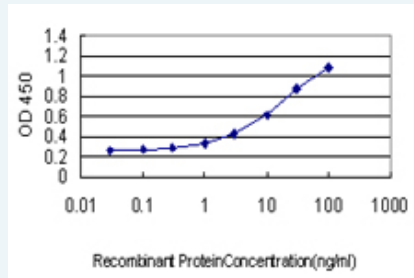
[enlarge](#)

ELISA

## Western Blot (Recombinant protein)

 [Protocol Download](#)

## Sandwich ELISA (Recombinant protein)



Detection limit for recombinant GST tagged HBB is approximately 0.3ng/ml as a capture antibody.

 [Protocol Download](#)

## ELISA

### Gene Information

Entrez GeneID: [3043](#)

GeneBank [BC007075](#)  
Accession#:

Protein [AAH07075](#)  
Accession#:

Gene Name: HBB

Gene Alias: CD113t-C

Gene Description: hemoglobin, beta

Omim ID: [141900](#), [603902](#)

Gene Ontology: [Hyperlink](#)

**Gene Summary:** The alpha (HBA) and beta (HBB) loci determine the structure of the 2 types of polypeptide chains in adult hemoglobin, Hb A. The normal adult hemoglobin tetramer consists of two alpha chains and two beta chains. Mutant beta globin causes sickle cell anemia. Absence of beta chain causes beta-zero-thalassemia. Reduced amounts of detectable beta globin causes beta-plus-thalassemia. The order of the genes in the beta-globin cluster is 5'-epsilon -- gamma-G -- gamma-A -- delta -- beta-3'. [provided by RefSeq]

Other Designations: beta globin,beta globin chain,hemoglobin beta chain

### Related Disease

[AIDS-Related Opportunistic Infections](#) [Albuminuria](#) [alpha-Thalassemia](#) [Anemia](#) [Anemia, Hypochromic](#) [Anemia, Iron-Deficiency](#) [Anemia, Sickle Cell](#) [sickle cell](#) [Atherosclerosis](#) [beta-Thalassemia](#) [Cardiovascular Diseases](#) [Chest Pain](#) [Cholelithiasis](#) [Coronary Artery Disease](#) [Coronary Disease](#) [Decision Making](#) [Diabetes Mellitus, Type 1](#) [Diabetes Mellitus, Type 2](#) [Disease Progression](#)

... see more

