



SZABO SCANDIC

Part of Europa Biosite

Produktinformation



Forschungsprodukte & Biochemikalien



Zellkultur & Verbrauchsmaterial



Diagnostik & molekulare Diagnostik



Laborgeräte & Service

Weitere Information auf den folgenden Seiten!
See the following pages for more information!



Lieferung & Zahlungsart

siehe unsere [Liefer- und Versandbedingungen](#)

Zuschläge

- Mindermengenzuschlag
- Trockeneiszuschlag
- Gefahrgutzuschlag
- Expressversand

SZABO-SCANDIC HandelsgmbH

Quellenstraße 110, A-1100 Wien

T. +43(0)1 489 3961-0

F. +43(0)1 489 3961-7

mail@szabo-scandic.com

www.szabo-scandic.com

[linkedin.com/company/szaboscandic](https://www.linkedin.com/company/szaboscandic) 

HBB monoclonal antibody (M12), clone 7B24

Catalog # : H00003043-M12

規格 : [100 ug]

List All

Specification

Product Description: Mouse monoclonal antibody raised against a partial recombinant HBB.

Immunogen: HBB (AAH07075, 38 a.a. ~ 147 a.a) partial recombinant protein with GST tag. MW of the GST tag alone is 26 KDa.

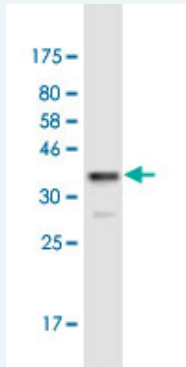
Sequence: WTQRRFESFGDLSTPDAVMGNPKVKAHGKKVLGAFSDGLAHLNLIKGT
FATLSELHCDKLHVDPENFRLLGNLVCLAHHFGKEFTPPVQAAYQKV
VAGVANALPHKYH

Host: Mouse

Reactivity: Human

Isotype: IgG1 Kappa

Quality Control Testing: Antibody Reactive Against Recombinant Protein.



Western Blot detection against Immunogen (37.84 KDa) .

Storage Buffer: In 1x PBS, pH 7.4

Storage Instruction: Store at -20°C or lower. Aliquot to avoid repeated freezing and thawing.

Datasheet: [Download](#)

Applications

Western Blot (Recombinant protein)

[Protocol Download](#)

ELISA

Gene Information

Entrez GeneID: [3043](#)

GeneBank Accession#: [BC007075](#)

Application Image

Western Blot (Recombinant protein)

ELISA

Protein Accession#: [AAH07075](#)

Gene Name: HBB

Gene Alias: CD113t-C

Gene Description: hemoglobin, beta

Omim ID: [141900](#), [603902](#)

Gene Ontology: [Hyperlink](#)

Gene Summary: The alpha (HBA) and beta (HBB) loci determine the structure of the 2 types of polypeptide chains in adult hemoglobin, Hb A. The normal adult hemoglobin tetramer consists of two alpha chains and two beta chains. Mutant beta globin causes sickle cell anemia. Absence of beta chain causes beta-zero-thalassemia. Reduced amounts of detectable beta globin causes beta-plus-thalassemia. The order of the genes in the beta-globin cluster is 5'-epsilon -- gamma-G -- gamma-A -- delta -- beta-3'. [provided by RefSeq]

Other Designations: beta globin,beta globin chain,hemoglobin beta chain

Related Disease

[AIDS-Related Opportunistic Infections](#) [Albuminuria](#) [alpha-Thalassemia](#) [Anemia](#) [Anemia, Hypochromic](#) [Anemia, Iron-Deficiency](#) [Anemia, Sickle Cell](#) [Anemia, sickle cell](#) [Atherosclerosis](#) [beta-Thalassemia](#) [Cardiovascular Diseases](#) [Chest Pain](#) [Cholelithiasis](#) [Coronary Artery Disease](#) [Coronary Disease](#) [Decision Making](#) [Diabetes Mellitus, Type 1](#) [Diabetes Mellitus, Type 2](#) [Disease Progression](#)

... see more