



SZABO SCANDIC

Part of Europa Biosite

Produktinformation



Forschungsprodukte & Biochemikalien



Zellkultur & Verbrauchsmaterial



Diagnostik & molekulare Diagnostik



Laborgeräte & Service

Weitere Information auf den folgenden Seiten!
See the following pages for more information!



Lieferung & Zahlungsart

siehe unsere [Liefer- und Versandbedingungen](#)

Zuschläge

- Mindermengenzuschlag
- Trockeneiszuschlag
- Gefahrgutzuschlag
- Expressversand

SZABO-SCANDIC HandelsgmbH

Quellenstraße 110, A-1100 Wien

T. +43(0)1 489 3961-0

F. +43(0)1 489 3961-7

mail@szabo-scandic.com

www.szabo-scandic.com

[linkedin.com/company/szaboscandic](https://www.linkedin.com/company/szaboscandic) 

HBG1 polyclonal antibody (A02)

Catalog # : H00003047-A02

規格 : [50 uL]

List All

Specification

Product Description: Mouse polyclonal antibody raised against a partial recombinant HBG1.

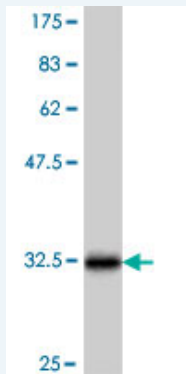
Immunogen: HBG1 (NP_000550, 44 a.a. ~ 106 a.a) partial recombinant protein with GST tag.

Sequence: DSFGNLSASAIMGNPKVKAHGKKVLTSLGDATKHLDDLKGTFAQLSEL
HCDKLHVDPENFKL

Host: Mouse

Reactivity: Human

Quality Control Testing: Antibody Reactive Against Recombinant Protein.



Western Blot detection against Immunogen (33.04 KDa) .

Storage Buffer: 50 % glycerol

Storage Instruction: Store at -20°C or lower. Aliquot to avoid repeated freezing and thawing.

MSDS: [Download](#)

Datasheet: [Download](#)

Publication Reference

1. A Synthetic Model of Human Beta-Thalassemia Erythropoiesis Using CD34+ Cells from Healthy Adult Donors.
Lee YT, Kim KS, Byrnes C, de Vasconcellos JF, Noh SJ, Rabel A, Meier ER, Miller JL
PLoS One. 2013 Jul 8;8(7):e68307. doi: 10.1371/journal.pone.0068307. Print 2013.

Applications

Western Blot (Recombinant protein)

[Protocol Download](#)

ELISA

Application Image

Western Blot (Recombinant protein)

ELISA

Gene Information

Entrez GeneID: [3047](#)

**GeneBank
Accession#:** [NM_000559](#)

**Protein
Accession#:** [NP_000550](#)

Gene Name: HBG1

Gene Alias: HBGA,HBGR,HSGGL1,PRO2979

**Gene
Description:** hemoglobin, gamma A

Omim ID: [142200](#)

Gene Ontology: [Hyperlink](#)

Gene Summary: The gamma globin genes (HBG1 and HBG2) are normally expressed in the fetal liver, spleen and bone marrow. Two gamma chains together with two alpha chains constitute fetal hemoglobin (HbF) which is normally replaced by adult hemoglobin (HbA) at birth. In some beta-thalassemias and related conditions, gamma chain production continues into adulthood. The two types of gamma chains differ at residue 136 where glycine is found in the G-gamma product (HBG2) and alanine is found in the A-gamma product (HBG1). The former is predominant at birth. The order of the genes in the beta-globin cluster is: 5'-epsilon -- gamma-G -- gamma-A -- delta -- beta--3'. [provided by RefSeq]

**Other
Designations:** A-gamma globin,gamma A hemoglobin,gamma globin,hemoglobin gamma-a chain,hemoglobin, gamma, regulator of

Related Disease

[beta-Thalassemia](#)