



SZABO SCANDIC

Part of Europa Biosite

Produktinformation



Forschungsprodukte & Biochemikalien



Zellkultur & Verbrauchsmaterial



Diagnostik & molekulare Diagnostik



Laborgeräte & Service

Weitere Information auf den folgenden Seiten!
See the following pages for more information!



Lieferung & Zahlungsart

siehe unsere [Liefer- und Versandbedingungen](#)

Zuschläge

- Mindermengenzuschlag
- Trockeneiszuschlag
- Gefahrgutzuschlag
- Expressversand

SZABO-SCANDIC HandelsgmbH

Quellenstraße 110, A-1100 Wien

T. +43(0)1 489 3961-0

F. +43(0)1 489 3961-7

mail@szabo-scandic.com

www.szabo-scandic.com

[linkedin.com/company/szaboscandic](https://www.linkedin.com/company/szaboscandic) 

HCCS 293T Cell Transient Overexpression Lysate(Denatured)

Catalog # : H00003052-T01

規格 : [100 uL]

[List All](#)

Specification

Transfected Cell Line: 293T

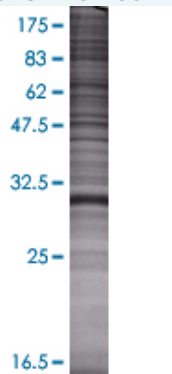
Plasmid: pCMV-HCCS full-length

Host: Human

Theoretical MW (kDa): 29.59

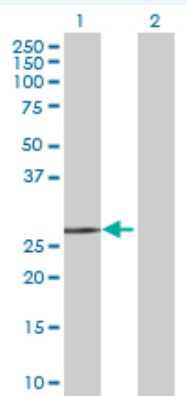
Quality Control Testing: Transient overexpression cell lysate was tested with Anti-HCCS antibody ([H00003052-B01](#)) by Western Blots.

SDS-PAGE Gel



HCCS transfected lysate.

Western Blot



Lane 1: HCCS transfected lysate (29.59 KDa)

Lane 2: Non-transfected lysate.

Storage Buffer: 1X Sample Buffer (50 mM Tris-HCl, 2% SDS, 10% glycerol, 300 mM 2-mercaptoethanol, 0.01% Bromophenol blue)

Storage Instruction: Store at -80°C. Aliquot to avoid repeated freezing and thawing.

MSDS:  [Download](#)

Applications

Western Blot

Gene Information

Entrez GeneID: [3052](#)

GeneBank Accession#: [BC001691.2](#)

Protein Accession#: [AAH01691.1](#)

Gene Name: HCCS

Gene Alias: CCHL,DKFZp77911858,MCOPS7

Gene Description: holocytochrome c synthase (cytochrome c heme-lyase)

Omim ID: [300056](#), [309801](#)

Gene Ontology: [Hyperlink](#)

Other Designations: OTTHUMP00000022903,OTTHUMP00000022904,OTTHUMP00000022905

Gene Pathway

[Porphyrin and chlorophyll metabolism](#)

[服務條款](#) | [隱私權政策](#) | [著作及商標](#) | [網站地圖](#)

©2016 亞諾法生技股份有限公司 Abnova Corporation. 版權所有.