



SZABO SCANDIC

Part of Europa Biosite

Produktinformation



Forschungsprodukte & Biochemikalien



Zellkultur & Verbrauchsmaterial



Diagnostik & molekulare Diagnostik



Laborgeräte & Service

Weitere Information auf den folgenden Seiten!
See the following pages for more information!



Lieferung & Zahlungsart

siehe unsere [Liefer- und Versandbedingungen](#)

Zuschläge

- Mindermengenzuschlag
- Trockeneiszuschlag
- Gefahrgutzuschlag
- Expressversand

SZABO-SCANDIC HandelsgmbH

Quellenstraße 110, A-1100 Wien

T. +43(0)1 489 3961-0

F. +43(0)1 489 3961-7

mail@szabo-scandic.com

www.szabo-scandic.com

[linkedin.com/company/szaboscandic](https://www.linkedin.com/company/szaboscandic) 

SERPIND1 purified MaxPab mouse polyclonal antibody (B01P) MaxPab®

Catalog # : H00003053-B01P

規格 : [50 ug]

[List All](#)

Specification

Product Description: Mouse polyclonal antibody raised against a full-length human SERPIND1 protein.

Immunogen: SERPIND1 (AAH35028.1, 1 a.a. ~ 499 a.a) full-length human protein.

Sequence:
 MKHSLNALLIFLIITSAWGGGSKGPLDQLEKGGETAQSADPQWEQLNNKN
 LSMPLLPADFKENTVTNDWIPEGEEDDDYLDLEKIFSEDDDYIDIVDSL
 VSPTDSDVSAGNILQLFHGKSRIQLNIVNAKFAFNLYRVLKQVNTFDNI
 FIAPVGISTAMGMISLGLKGETHEQVHSILHFKDFVNASSKYEITTIHNLFRK
 LTHRLFRRNFGYTLRSVNDLYIQKQFPILLDFKTKVREYF AEAQIADFSD
 PAFISKTNHIMKLTGKLIKDALENIDPATQMMILNCYFKGSWVWVNFVEM
 THNHNFRLNEREVVKVSMQTKGNFLAANDQELDCDILQLEYVGGISMLI
 VPHKMSGMKTLEAQLTPGWERWQKSMNRTREVLLPKFKLEKNYNL
 VESLKLGMIRMLFDKNGNMAGISDQRIADLFKHQGTITVNEEGTQATTVT
 TVGFMPSTQVRFTVDRPFLFLIYEHRTSCLLFMGRVANPSRS

Host: Mouse

Reactivity: Human

Quality Control Testing: Antibody reactive against mammalian transfected lysate.

Storage Buffer: In 1x PBS, pH 7.4

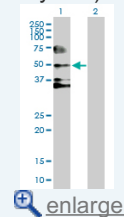
Storage Instruction: Store at -20°C or lower. Aliquot to avoid repeated freezing and thawing.


MSDS:  [Download](#)

Datasheet:  [Download](#)

Application Image

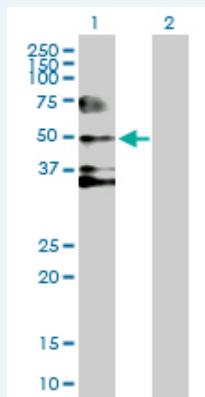
Western Blot (Transfected lysate)



 [enlarge](#)

Applications

Western Blot (Transfected lysate)



Western Blot analysis of SERPIND1 expression in transfected 293T cell line (H00003053-T01) by SERPIND1 MaxPab polyclonal antibody.

Lane 1: SERPIND1 transfected lysate(54.89 KDa).
 Lane 2: Non-transfected lysate.

Gene Information

Entrez GeneID: [3053](#)

**GeneBank
Accession#:** [BC035028.2](#)

**Protein
Accession#:** [AAH35028.1](#)

Gene Name: SERPIND1

Gene Alias: D22S673,HC2,HCF2,HCII,HLS2,LS2

**Gene
Description:** serpin peptidase inhibitor, clade D (heparin cofactor), member 1

Omim ID: [142360](#)

Gene Ontology: [Hyperlink](#)

Gene Summary: The product encoded by this gene is a serine proteinase inhibitor which rapidly inhibits thrombin in the presence of dermatan sulfate or heparin. The gene contains five exons and four introns. This protein shares homology with antithrombin III and other members of the alpha 1-antitrypsin superfamily. Mutations in this gene are associated with heparin cofactor II deficiency. [provided by RefSeq]

**Other
Designations:** heparin cofactor II,leuserpin 2,serine (or cysteine) proteinase inhibitor, clade D (heparin cofactor), member 1

Gene Pathway

[Complement and coagulation cascades](#)

Related Disease

[Cardiovascular Diseases](#) [Diabetes Mellitus, Type 2](#) [Edema](#)