



SZABO SCANDIC

Part of Europa Biosite

Produktinformation



Forschungsprodukte & Biochemikalien



Zellkultur & Verbrauchsmaterial



Diagnostik & molekulare Diagnostik



Laborgeräte & Service

Weitere Information auf den folgenden Seiten!
See the following pages for more information!



Lieferung & Zahlungsart

siehe unsere [Liefer- und Versandbedingungen](#)

Zuschläge

- Mindermengenzuschlag
- Trockeneiszuschlag
- Gefahrgutzuschlag
- Expressversand

SZABO-SCANDIC HandelsgmbH

Quellenstraße 110, A-1100 Wien

T. +43(0)1 489 3961-0

F. +43(0)1 489 3961-7

mail@szabo-scandic.com

www.szabo-scandic.com

[linkedin.com/company/szaboscandic](https://www.linkedin.com/company/szaboscandic) 

SERPIND1 293T Cell Transient Overexpression Lysate(Denatured)

Catalog # : H00003053-T01

規格 : [100 uL]

List All

Specification

Transfected Cell Line: 293T

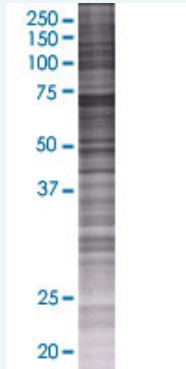
Plasmid: pCMV-SERPIND1 full-length

Host: Human

Theoretical MW (kDa): 55

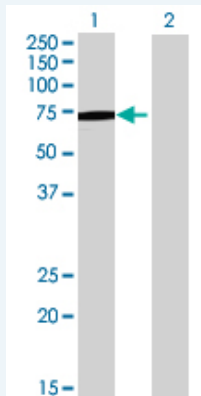
Quality Control Testing: Transient overexpression cell lysate was tested with Anti-SERPIND1 antibody (H00003053-B01) by Western Blots.

SDS-PAGE Gel



SERPIND1 transfected lysate.

Western Blot



Lane 1: SERPIND1 transfected lysate (55 KDa)

Lane 2: Non-transfected lysate.

Storage Buffer: 1X Sample Buffer (50 mM Tris-HCl, 2% SDS, 10% glycerol, 300 mM 2-mercaptoethanol, 0.01% Bromophenol blue)

Storage Instruction: Store at -80°C. Aliquot to avoid repeated freezing and thawing.

MSDS:  [Download](#)

Applications

Western Blot

Gene Information

Entrez GeneID: [3053](#)

**GeneBank
Accession#:** [BC035028.2](#)

**Protein
Accession#:** [AAH35028.1](#)

Gene Name: SERPIND1

Gene Alias: D22S673,HC2,HCF2,HCII,HLS2,LS2

**Gene
Description:** serpin peptidase inhibitor, clade D (heparin cofactor), member 1

Omim ID: [142360](#)

Gene Ontology: [Hyperlink](#)

Gene Summary: The product encoded by this gene is a serine proteinase inhibitor which rapidly inhibits thrombin in the presence of dermatan sulfate or heparin. The gene contains five exons and four introns. This protein shares homology with antithrombin III and other members of the alpha 1-antitrypsin superfamily. Mutations in this gene are associated with heparin cofactor II deficiency. [provided by RefSeq]

**Other
Designations:** heparin cofactor II,leuserpin 2,serine (or cysteine) proteinase inhibitor, clade D (heparin cofactor), member 1

Gene Pathway

[Complement and coagulation cascades](#)

Related Disease

[Cardiovascular Diseases](#) [Diabetes Mellitus, Type 2](#) [Edema](#)