



SZABO SCANDIC

Part of Europa Biosite

Produktinformation



Forschungsprodukte & Biochemikalien



Zellkultur & Verbrauchsmaterial



Diagnostik & molekulare Diagnostik



Laborgeräte & Service

Weitere Information auf den folgenden Seiten!
See the following pages for more information!



Lieferung & Zahlungsart

siehe unsere [Liefer- und Versandbedingungen](#)

Zuschläge

- Mindermengenzuschlag
- Trockeneiszuschlag
- Gefahrgutzuschlag
- Expressversand

SZABO-SCANDIC HandelsgmbH

Quellenstraße 110, A-1100 Wien

T. +43(0)1 489 3961-0

F. +43(0)1 489 3961-7

mail@szabo-scandic.com

www.szabo-scandic.com

[linkedin.com/company/szaboscandic](https://www.linkedin.com/company/szaboscandic) 



HCK purified MaxPab rabbit polyclonal antibody (D01P) MaxPab®

Catalog # : H00003055-D01P

規格 : [100 ug]

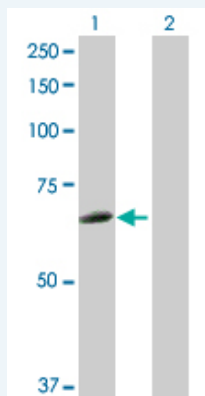
[List All](#)

Specification

Product Description:	Rabbit polyclonal antibody raised against a full-length human HCK protein.
Immunogen:	HCK (ENSP00000365012, 1 a.a. ~ 505 a.a) full-length human protein.
Sequence:	MGCMKSKFLQVGGNTFSKTETSASPHCPVYVPDPTSTIKPGPNSHNSNT PGIREAGSEDIIVVALYDYEAIHHEDLSFQKGDQMVVLEESGEWWWKARSL ATRKEGYIPSNYVARVDSLETEEWFFKGISRKAERQLLAPGNMLGSFMI RDSETTKGSYLSVRDYDPRQGDVVKHYKIRTLDNGGFYISPRSTFSTL QELVDHYKKGNDGLCQKLSVPCMSKPKPWEKDAWEIPRESLKLEKK LGAGQFGEVWMATYNKHTKVAVKTMKPGSMSVEAFLAEANVMKTLQHD KLVKLVAVVTKEPIYITFEKAGSLLDFLKSDEGSKQPLPKLIDFSAQIAE GMAFIEQRNYIHRDLRAANILVSASLVCKIADFGLARVIEDNEYTAREGAKF PIKWTAPEAINFGSFTIKSDVWSFGILLMEIVTYGRIPYPGMSNPEVIRALE RGYRMPRPENCPPEELYNIMMRCWKNRPEERPTFEYIQSVLDDFYTATES QYQQQP
Host:	Rabbit
Reactivity:	Human
Quality Control Testing:	Antibody reactive against mammalian transfected lysate.
Storage Buffer:	In 1x PBS, pH 7.4
Storage Instruction:	Store at -20°C or lower. Aliquot to avoid repeated freezing and thawing.
MSDS:	 Download
Datasheet:	 Download

Applications

Western Blot (Transfected lysate)

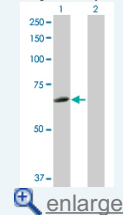


Western Blot analysis of HCK expression in transfected 293T cell line (H00003055-T02) by HCK MaxPab polyclonal antibody.

Lane 1: HCK transfected lysate(57.30 kDa).

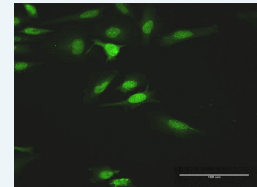
Application Image


Western Blot (Transfected lysate)



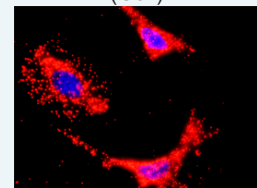
 [enlarge](#)

Immunofluorescence



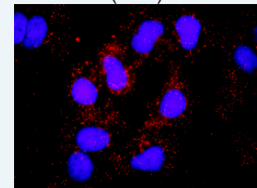
 [enlarge](#)

In situ Proximity Ligation Assay (Cell)



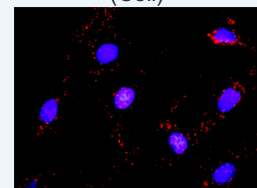
 [enlarge](#)

In situ Proximity Ligation Assay (Cell)



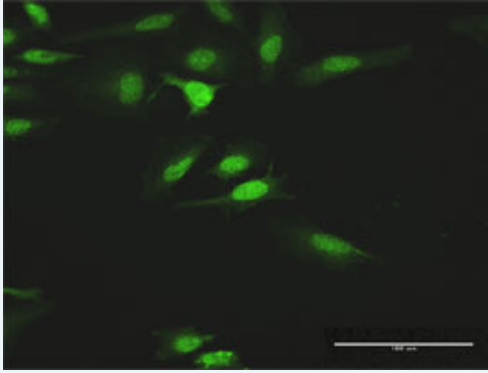
 [enlarge](#)


In situ Proximity Ligation Assay (Cell)



 [enlarge](#)

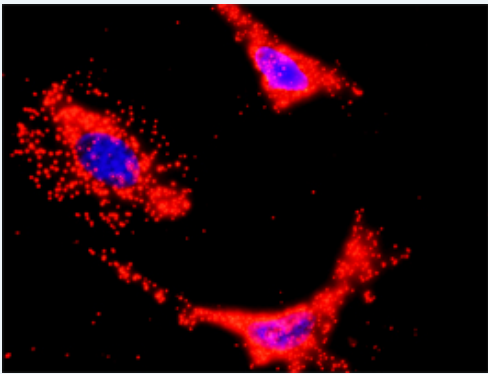
Immunofluorescence



 enlarge this image

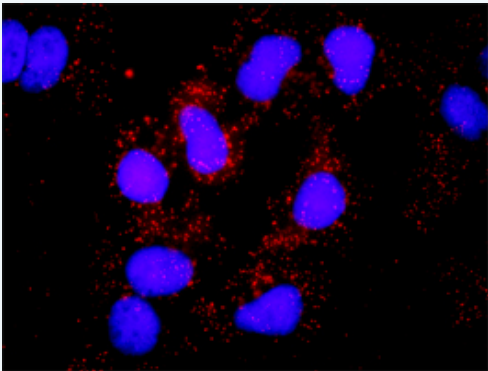
Immunofluorescence of purified MaxPab antibody to HCK on HeLa cell. [antibody concentration 10 ug/ml]

In situ Proximity Ligation Assay (Cell)



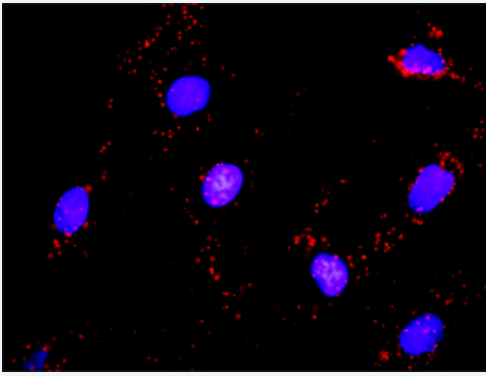
Proximity Ligation Analysis of protein-protein interactions between HCK and PIK3CB. HeLa cells were stained with anti-HCK rabbit purified polyclonal 1:1200 and anti-PIK3CB mouse monoclonal antibody 1:50. Each red dot represents the detection of protein-protein interaction complex, and nuclei were counterstained with DAPI (blue).

In situ Proximity Ligation Assay (Cell)



Proximity Ligation Analysis of protein-protein interactions between HCK and SOS1. Huh7 cells were stained with anti-HCK rabbit purified polyclonal 1:1200 and anti-SOS1 mouse monoclonal antibody 1:50. Each red dot represents the detection of protein-protein interaction complex, and nuclei were counterstained with DAPI (blue).

In situ Proximity Ligation Assay (Cell)



Proximity Ligation Analysis of protein-protein interactions between HCK and CRKL. Mahlavu cells were stained with anti-HCK rabbit purified polyclonal 1:1200 and anti-CRKL mouse monoclonal antibody 1:50. Each red dot represents the detection of protein-protein interaction complex, and nuclei were counterstained with DAPI (blue).

Gene Information

Entrez GeneID: [3055](#)

GeneBank Accession#: [ENST00000375852](#)

Protein Accession#: [ENSP00000365012](#)

Gene Name: HCK

Gene Alias: JTK9

Gene Description: hemopoietic cell kinase

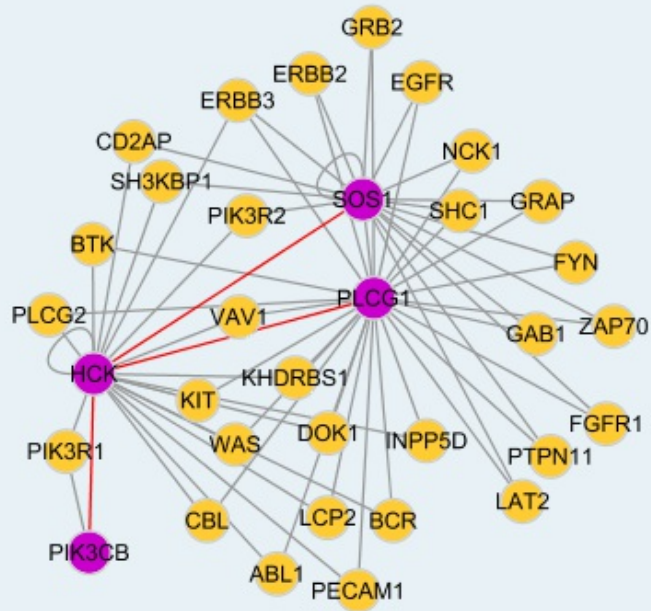
Omim ID: [142370](#)

Gene Ontology: [Hyperlink](#)

Gene Summary: The protein encoded by this gene is a protein-tyrosine kinase that is predominantly expressed in hemopoietic cell types. The encoded protein may help couple the Fc receptor to the activation of the respiratory burst. In addition, it may play a role in neutrophil migration and in the degranulation of neutrophils. Alternate translation initiation site usage, including a non-AUG (CUG) codon, results in the production of two different isoforms, that have different subcellular localization. [provided by RefSeq]

Other Designations: tyrosine protein kinase HCK

Interactome



Gene Pathway

Chemokine signaling pathway Fc gamma R-mediated phagocytosis

Related Disease

HIV Infections Pulmonary Disease, Chronic Obstructive