



SZABO SCANDIC

Part of Europa Biosite

Produktinformation



Forschungsprodukte & Biochemikalien



Zellkultur & Verbrauchsmaterial



Diagnostik & molekulare Diagnostik



Laborgeräte & Service

Weitere Information auf den folgenden Seiten!
See the following pages for more information!



Lieferung & Zahlungsart

siehe unsere [Liefer- und Versandbedingungen](#)

Zuschläge

- Mindermengenzuschlag
- Trockeneiszuschlag
- Gefahrgutzuschlag
- Expressversand

SZABO-SCANDIC HandelsgmbH

Quellenstraße 110, A-1100 Wien

T. +43(0)1 489 3961-0

F. +43(0)1 489 3961-7

mail@szabo-scandic.com

www.szabo-scandic.com

[linkedin.com/company/szaboscandic](https://www.linkedin.com/company/szaboscandic) 

HCLS1 MaxPab mouse polyclonal antibody (B01) MaxPab®

Catalog # : H00003059-B01

規格 : [50 uL]

[List All](#)

Specification

Product Description: Mouse polyclonal antibody raised against a full-length human HCLS1 protein.

Immunogen: HCLS1 (NP_005326.1, 1 a.a. ~ 486 a.a) full-length human protein.

Sequence:
 MWKSVVGHVSVSVETQGDDWDTDPDFVNDISEKEQRWGAKTIEGSG
 RTEHINIHLRNKVSEEHVLRKKEMESGPKASHGYGGRFGVERDRMDK
 SAVGHEYVAEVEKHSSQTDAAKGFGGKYGVERDRADKSAVGFDYKGEV
 EKHTSQKDYSRGGFGRYGVKDKWKAALGYDYKGETEKHESQRDYA
 KGGFQYGIQKDRVDKSAVGFNEMEAPTTAYKKTPIEAASSGARGLKA
 KFESMAEEKRKRKEEKAQQVARRQQRKAVTKRSPEAPQPVIAMEEP
 AVPAPLPKKISSEAWPPVGTTPPSESEPVRTSREHPVLLPIRQTLPEDN
 EEPALPPRTLLEGLQVEEPPVYEAPEPEPEPEPEPENDYEDVEEMDRH
 EQEDEPEGDYEEVLEPEDSSFSSALAGSSGCPAGAGAGAVLGISAVL
 YDYQGEQSDELSPDDVITDIEMVDEGWWRGRCHGHFGLFPANYVKL
 LE

Host: Mouse

Reactivity: Human

Quality Control Testing: Antibody reactive against mammalian transfected lysate.

Storage Buffer: No additive

Storage Instruction: Store at -20°C or lower. Aliquot to avoid repeated freezing and thawing.

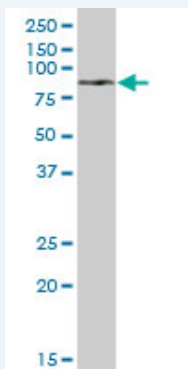
Note: For IHC and IF applications, antibody purification with Protein A will be needed prior to use.

MSDS: [Download](#)

Datasheet: [Download](#)

Applications

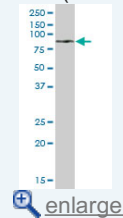
Western Blot (Tissue lysate)



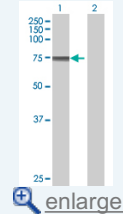
HCLS1 MaxPab polyclonal antibody. Western Blot analysis of HCLS1 expression in human liver.

Application Image

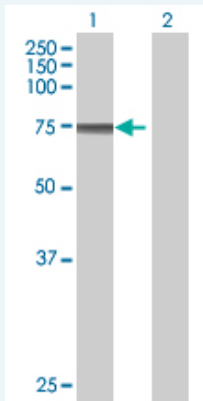
Western Blot (Tissue lysate)



Western Blot (Transfected lysate)



Western Blot (Transfected lysate)



Western Blot analysis of HCLS1 expression in transfected 293T cell line ([H00003059-T01](#)) by HCLS1 MaxPab polyclonal antibody.

Lane 1: HCLS1 transfected lysate(53.46 KDa).

Lane 2: Non-transfected lysate.

Gene Information

Entrez GeneID: [3059](#)

GeneBank [NM_005335.3](#)
Accession#:

Protein [NP_005326.1](#)
Accession#:

Gene Name: HCLS1

Gene Alias: CTTNL,HS1

Gene [hematopoietic cell-specific Lyn substrate 1](#)
Description:

Omim ID: [601306](#)

Gene Ontology: [Hyperlink](#)

Other [cortactin-like](#)
Designations:

Gene Pathway

[Pathogenic Escherichia coli infection - EHEC Tight junction](#)

Related Disease

[Kidney Failure, Chronic Lupus Erythematosus, Systemic](#)