



# SZABO SCANDIC

Part of Europa Biosite

## Produktinformation



Forschungsprodukte & Biochemikalien



Zellkultur & Verbrauchsmaterial



Diagnostik & molekulare Diagnostik



Laborgeräte & Service

Weitere Information auf den folgenden Seiten!  
See the following pages for more information!



### Lieferung & Zahlungsart

siehe unsere [Liefer- und Versandbedingungen](#)

### Zuschläge

- Mindermengenzuschlag
- Trockeneiszuschlag
- Gefahrgutzuschlag
- Expressversand

### SZABO-SCANDIC HandelsgmbH

Quellenstraße 110, A-1100 Wien

T. +43(0)1 489 3961-0

F. +43(0)1 489 3961-7

[mail@szabo-scandic.com](mailto:mail@szabo-scandic.com)

[www.szabo-scandic.com](http://www.szabo-scandic.com)

[linkedin.com/company/szaboscandic](https://www.linkedin.com/company/szaboscandic) 

## HCLS1 monoclonal antibody (M02), clone 1A8

Catalog # : H00003059-M02

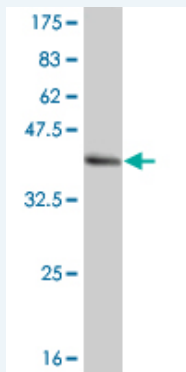
規格 : [ 100 ug ]

[List All](#)

### Specification

<b>Product Description:</b>	Mouse monoclonal antibody raised against a partial recombinant HCLS1.
<b>Immunogen:</b>	HCLS1 (AAH16758, 266 a.a. ~ 355 a.a) partial recombinant protein with GST tag. MW of the GST tag alone is 26 KDa.
<b>Sequence:</b>	QERKAVTKRSPEAPQPVIAMEEPAVPAPLPKKISSEAWPPVGTPPSSESE PVRTSREHPVPLLPIRQTLPEDNEEPPALPPRTLLEGLQVE
<b>Host:</b>	Mouse
<b>Reactivity:</b>	Human
<b>Isotype:</b>	IgG1 Kappa

**Quality Control Testing:** Antibody Reactive Against Recombinant Protein.



Western Blot detection against Immunogen (35.64 KDa) .

**Storage Buffer:** In 1x PBS, pH 7.4

**Storage Instruction:** Store at -20°C or lower. Aliquot to avoid repeated freezing and thawing.

**MSDS:** [Download](#)

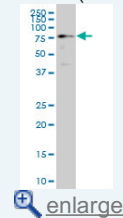
**Datasheet:** [Download](#)

### Applications

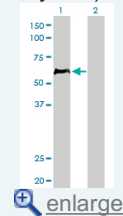
**Western Blot (Cell lysate)**

### Application Image

Western Blot (Cell lysate)

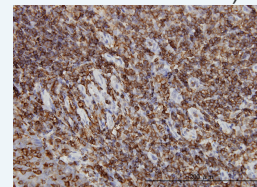


Western Blot (Transfected lysate)

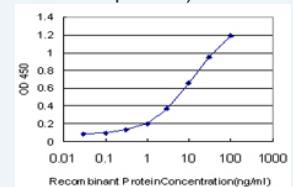


Western Blot (Recombinant protein)

Immunohistochemistry (Formalin/PFA-fixed paraffin-embedded sections)

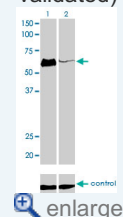


Sandwich ELISA (Recombinant protein)

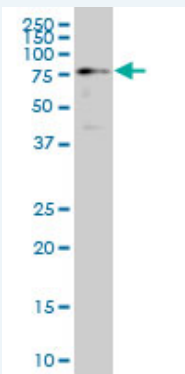


ELISA


RNAi Knockdown (Antibody validated)

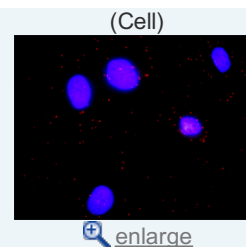


*In situ* Proximity Ligation Assay

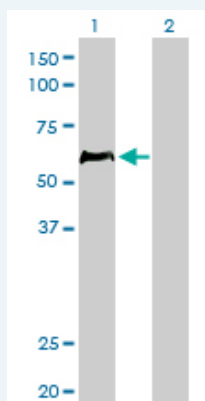


HCLS1 monoclonal antibody (M02), clone 1A8 Western Blot analysis of HCLS1 expression in K-562 ( Cat # L009V1 ).

 [Protocol Download](#)



#### Western Blot (Transfected lysate)




Western Blot analysis of HCLS1 expression in transfected 293T cell line by HCLS1 monoclonal antibody (M02), clone 1A8.

Lane 1: HCLS1 transfected lysate(54 KDa).

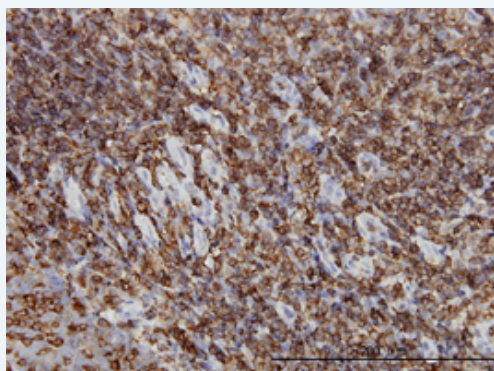
Lane 2: Non-transfected lysate.

 [Protocol Download](#)

#### Western Blot (Recombinant protein)

 [Protocol Download](#)

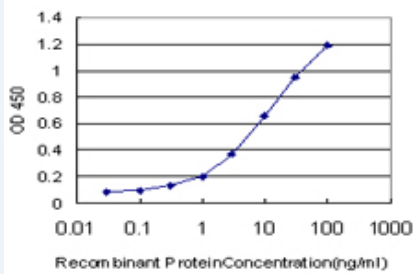
#### Immunohistochemistry (Formalin/PFA-fixed paraffin-embedded sections)



Immunoperoxidase of monoclonal antibody to HCLS1 on formalin-fixed paraffin-embedded human tonsil. [antibody concentration 3 ug/ml]

 [Protocol Download](#)

#### Sandwich ELISA (Recombinant protein)

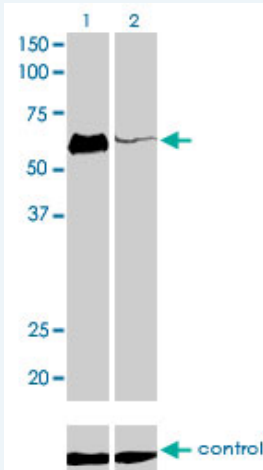


Detection limit for recombinant GST tagged HCLS1 is approximately 0.1 ng/ml as a capture antibody.

[Protocol Download](#)

## ELISA

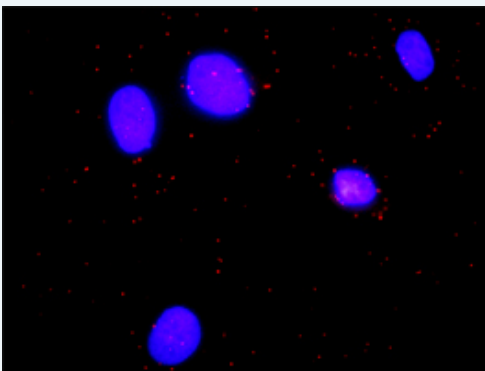
### RNAi Knockdown (Antibody validated)



Western blot analysis of HCLS1 over-expressed 293 cell line, cotransfected with HCLS1 Validated Chimera RNAi ( Cat # H00003059-R01V ) (Lane 2) or non-transfected control (Lane 1). Blot probed with HCLS1 monoclonal antibody (M02), clone 1A8 (Cat # H00003059-M02 ). GAPDH ( 36.1 kDa ) used as specificity and loading control.

[Protocol Download](#)

### In situ Proximity Ligation Assay (Cell)



Proximity Ligation Analysis of protein-protein interactions between CASP3 and HCLS1. HeLa cells were stained with anti-CASP3 rabbit purified polyclonal 1:1200 and anti-HCLS1 mouse monoclonal antibody 1:50. Each red dot represents the detection of protein-protein interaction complex, and nuclei were counterstained with DAPI (blue).

## Gene Information

Entrez GeneID: [3059](#)

GeneBank [BC016758](#)

Accession#:

Protein [AAH16758](#)

Accession#:

**Gene Name:** HCLS1

**Gene Alias:** CTTNL,HS1

**Gene Description:** hematopoietic cell-specific Lyn substrate 1

**Omim ID:** [601306](#)

**Gene Ontology:** [Hyperlink](#)

**Other Designations:** cortactin-like

#### **Gene Pathway**

[Pathogenic Escherichia coli infection - EHEC Tight junction](#)

#### **Related Disease**

[Kidney Failure, Chronic](#) [Lupus Erythematosus, Systemic](#)

[服務條款](#) | [隱私權政策](#) | [著作及商標](#) | [網站地圖](#)

©2016 亞諾法生技股份有限公司 Abnova Corporation. 版權所有.