



SZABO SCANDIC

Part of Europa Biosite

Produktinformation



Forschungsprodukte & Biochemikalien



Zellkultur & Verbrauchsmaterial



Diagnostik & molekulare Diagnostik



Laborgeräte & Service

Weitere Information auf den folgenden Seiten!
See the following pages for more information!



Lieferung & Zahlungsart

siehe unsere [Liefer- und Versandbedingungen](#)

Zuschläge

- Mindermengenzuschlag
- Trockeneiszuschlag
- Gefahrgutzuschlag
- Expressversand

SZABO-SCANDIC HandelsgmbH

Quellenstraße 110, A-1100 Wien

T. +43(0)1 489 3961-0

F. +43(0)1 489 3961-7

mail@szabo-scandic.com

www.szabo-scandic.com

[linkedin.com/company/szaboscandic](https://www.linkedin.com/company/szaboscandic) 

HCLS1 monoclonal antibody (M06), clone 2A9

Catalog # : H00003059-M06

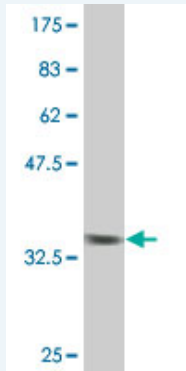
規格 : [100 ug]

[List All](#)

Specification

Product Description:	Mouse monoclonal antibody raised against a partial recombinant HCLS1.
Immunogen:	HCLS1 (AAH16758, 266 a.a. ~ 355 a.a) partial recombinant protein with GST tag. MW of the GST tag alone is 26 KDa.
Sequence:	QERKAVTKRSPEAPQPVIAMEEPAVPAPLPKKISSEAWPPVGTPPSSESE PVRTSREHPVPLLPIRQTLPEDNEEPPALPPRTLLEGLQVE
Host:	Mouse
Reactivity:	Human
Isotype:	IgG1 Kappa

Quality Control Testing: Antibody Reactive Against Recombinant Protein.



Western Blot detection against Immunogen (35.64 KDa) .

Storage Buffer: In 1x PBS, pH 7.4

Storage Instruction: Store at -20°C or lower. Aliquot to avoid repeated freezing and thawing.

MSDS: [Download](#)

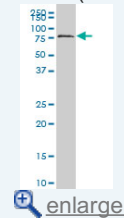
Datasheet: [Download](#)

Applications

Western Blot (Cell lysate)

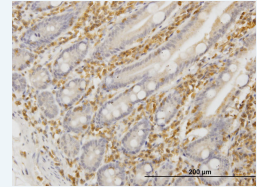
Application Image

Western Blot (Cell lysate)



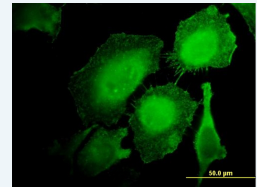
Western Blot (Recombinant protein)

Immunohistochemistry (Formalin/PFA-fixed paraffin-embedded sections)



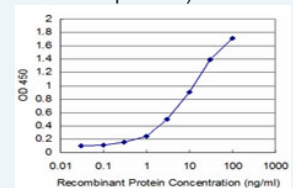
[enlarge](#)

Immunofluorescence



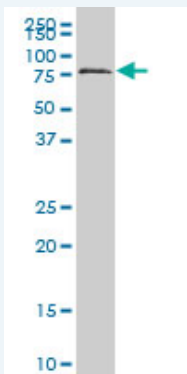
[enlarge](#)

Sandwich ELISA (Recombinant protein)



[enlarge](#)

ELISA



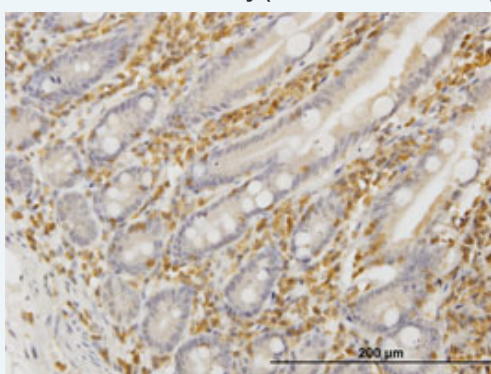
HCLS1 monoclonal antibody (M06), clone 2A9 Western Blot analysis of HCLS1 expression in K-562 (Cat # L009V1).

[Protocol Download](#)

Western Blot (Recombinant protein)

[Protocol Download](#)

Immunohistochemistry (Formalin/PFA-fixed paraffin-embedded sections)

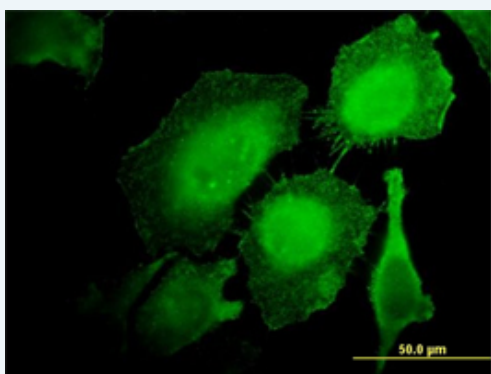


[enlarge this image](#)

Immunoperoxidase of monoclonal antibody to HCLS1 on formalin-fixed paraffin-embedded human small Intestine. [antibody concentration 3 ug/ml]

[Protocol Download](#)

Immunofluorescence

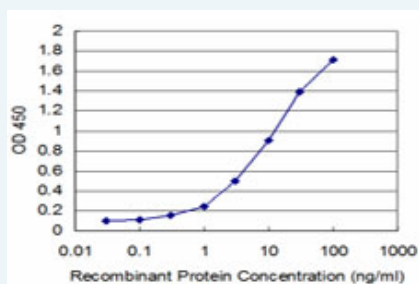


[enlarge this image](#)

Immunofluorescence of monoclonal antibody to HCLS1 on HeLa cell. [antibody concentration 10 ug/ml]

[Protocol Download](#)

Sandwich ELISA (Recombinant protein)



Detection limit for recombinant GST tagged HCLS1 is approximately 0.3ng/ml as a capture antibody.

ELISA

Gene Information

Entrez GeneID: [3059](#)

GeneBank Accession#: [BC016758](#)

Protein Accession#: [AAH16758](#)

Gene Name: HCLS1

Gene Alias: CTTNL,HS1

Gene Description: hematopoietic cell-specific Lyn substrate 1

Omim ID: [601306](#)

Gene Ontology: [Hyperlink](#)

Other Designations: cortactin-like

Gene Pathway

[Pathogenic Escherichia coli infection - EHEC Tight junction](#)

Related Disease

[Kidney Failure, Chronic](#), [Lupus Erythematosus, Systemic](#)