



SZABO SCANDIC

Part of Europa Biosite

Produktinformation



Forschungsprodukte & Biochemikalien



Zellkultur & Verbrauchsmaterial



Diagnostik & molekulare Diagnostik



Laborgeräte & Service

Weitere Information auf den folgenden Seiten!
See the following pages for more information!



Lieferung & Zahlungsart

siehe unsere [Liefer- und Versandbedingungen](#)

Zuschläge

- Mindermengenzuschlag
- Trockeneiszuschlag
- Gefahrgutzuschlag
- Expressversand

SZABO-SCANDIC HandelsgmbH

Quellenstraße 110, A-1100 Wien

T. +43(0)1 489 3961-0

F. +43(0)1 489 3961-7

mail@szabo-scandic.com

www.szabo-scandic.com

[linkedin.com/company/szaboscandic](https://www.linkedin.com/company/szaboscandic) 

HCRTR2 monoclonal antibody (M01), clone 1E3

Catalog # : H00003062-M01

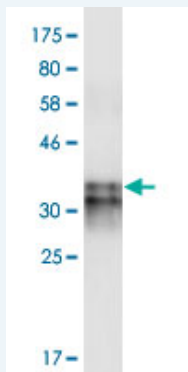
規格 : [100 ug]

List All

Specification

Product Description:	Mouse monoclonal antibody raised against a partial recombinant HCRTR2.
Immunogen:	HCRTR2 (NP_001517, 1 a.a. ~ 54 a.a) partial recombinant protein with GST tag. MW of the GST tag alone is 26 KDa.
Sequence:	MSGTKLEDSPPCRNWSSASELNETQEPFLNPTDYDDEEFLRYLWREYLHPKEYE
Host:	Mouse
Reactivity:	Human
Isotype:	IgG1 Kappa

Quality Control Testing: Antibody Reactive Against Recombinant Protein.



Western Blot detection against Immunogen (31.68 KDa) .

Storage Buffer: In 1x PBS, pH 7.4

Storage Instruction: Store at -20°C or lower. Aliquot to avoid repeated freezing and thawing.

MSDS: [Download](#)

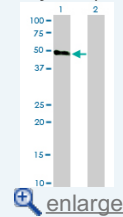
Datasheet: [Download](#)

Applications

Western Blot (Transfected lysate)

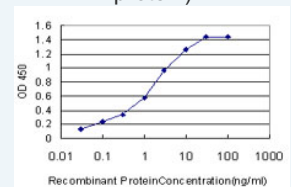
Application Image

Western Blot (Transfected lysate)



Western Blot (Recombinant protein)

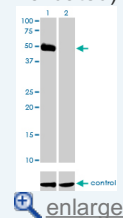
Sandwich ELISA (Recombinant protein)



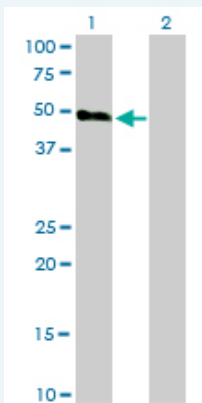
[enlarge](#)

ELISA

RNAi Knockdown (Antibody validated)



[enlarge](#)



Western Blot analysis of HCRTR2 expression in transfected 293T cell line by HCRTR2 monoclonal antibody (M01), clone 1E3.

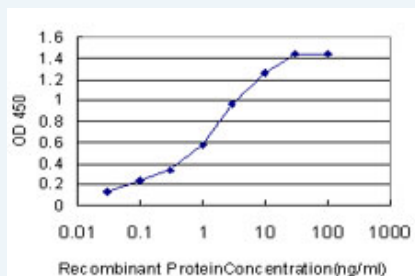
Lane 1: HCRTR2 transfected lysate(50.7 KDa).
Lane 2: Non-transfected lysate.

[Protocol Download](#)

Western Blot (Recombinant protein)

[Protocol Download](#)

Sandwich ELISA (Recombinant protein)

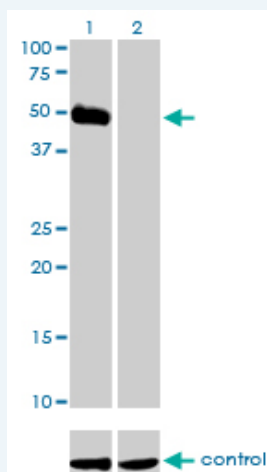


Detection limit for recombinant GST tagged HCRTR2 is approximately 0.03ng/ml as a capture antibody.

[Protocol Download](#)

ELISA

RNAi Knockdown (Antibody validated)



Western blot analysis of HCRTR2 over-expressed 293 cell line, cotransfected with HCRTR2 Validated Chimera RNAi (Cat # H00003062-R01V) (Lane 2) or non-transfected control (Lane 1). Blot probed with HCRTR2 monoclonal antibody (M01), clone 1E3 (Cat # H00003062-M01). GAPDH (36.1 kDa) used as specificity and loading control.

[Protocol Download](#)

Gene Information

Entrez GeneID: [3062](#)

**GeneBank
Accession#:** [NM_001526](#)

**Protein
Accession#:** [NP_001517](#)

Gene Name: HCRTR2

Gene Alias: OX2R

**Gene
Description:** hypocretin (orexin) receptor 2

Omim ID: [602393](#)

Gene Ontology: [Hyperlink](#)

Gene Summary: The protein encoded by this gene is a G-protein coupled receptor involved in the regulation of feeding behavior. The encoded protein binds the hypothalamic neuropeptides orexin A and orexin B. A related gene (HCRTR1) encodes a G-protein coupled receptor that selectively binds orexin A. [provided by RefSeq]

**Other
Designations:** OTTHUMP00000017762,OTTHUMP00000039969,hypocretin receptor-2,orexin receptor 2

Gene Pathway

[Neuroactive ligand-receptor interaction](#)

Related Disease

[Anorexia Nervosa](#) [Attention Deficit Disorder with Hyperactivity](#) [Autistic Disorder](#) [Bulimia](#) [Cardiovascular Diseases](#) [Cluster Headache](#) [Diabetes Mellitus, Type 2](#) [Disorders of Excessive Somnolence](#) [Edema](#) [Genetic Predisposition to Disease](#) [Hyponatremia](#) [Mental Disorders](#) [Migraine Disorders](#) [Narcolepsy](#) [NARP](#) [Schizophrenia](#) [Schizophrenia](#) [Sleep Apnea](#) [Obstructive](#) [Tourette Syndrome](#)

[服務條款](#) | [隱私權政策](#) | [著作及商標](#) | [網站地圖](#)

©2016 亞諾法生技股份有限公司 Abnova Corporation. 版權所有.