



# SZABO SCANDIC

Part of Europa Biosite

## Produktinformation



Forschungsprodukte & Biochemikalien



Zellkultur & Verbrauchsmaterial



Diagnostik & molekulare Diagnostik



Laborgeräte & Service

Weitere Information auf den folgenden Seiten!  
See the following pages for more information!



### Lieferung & Zahlungsart

siehe unsere [Liefer- und Versandbedingungen](#)

### Zuschläge

- Mindermengenzuschlag
- Trockeneiszuschlag
- Gefahrgutzuschlag
- Expressversand

### SZABO-SCANDIC HandelsgmbH

Quellenstraße 110, A-1100 Wien

T. +43(0)1 489 3961-0

F. +43(0)1 489 3961-7

[mail@szabo-scandic.com](mailto:mail@szabo-scandic.com)

[www.szabo-scandic.com](http://www.szabo-scandic.com)

[linkedin.com/company/szaboscandic](https://www.linkedin.com/company/szaboscandic) 

## HELLS monoclonal antibody (M04), clone 2G10

Catalog # : H00003070-M04

規格 : [ 100 ug ]

[List All](#)

### Specification

**Product Description:** Mouse monoclonal antibody raised against a full length recombinant HELLS.

**Immunogen:** HELLS (AAH30963, 1 a.a. ~ 348 a.a) full-length recombinant protein with GST tag. MW of the GST tag alone is 26 KDa.

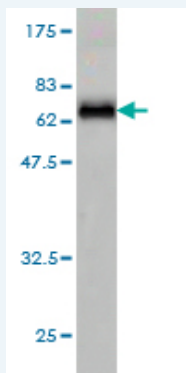
**Sequence:**  
 MFGSSEKETIELSPTGRPKRRTKRSINYSKIDDFPNELEKLISQIQPEVDRE  
 RAWVEVNIPVESEVNLKLNIMMLLRKCCNHPYLIIEYPIDPVTQEFKIDEEL  
 VTNSGKFLILDRMLPELKKRGHKVLLFSQMTSMLDILMDYCHLRDFNFSR  
 LDGMSYSEREKNMHSFNTDPEVFIFLVSTRAGGLGINLTAADTVIYDSD  
 WNPQSDLQAQDRCHRIGQTKPVVYRLVTANTIDQKIVERAAAKRKLEKL  
 IHHKNHFKGGQSGLNLSKNFLDPKELMELLKSRDYEREIKGSREKVISDKD  
 LELLLDRSDLIDQMNASGPIKEKMGIFKILENSEDSSPECLF

**Host:** Mouse

**Reactivity:** Human

**Isotype:** IgG1 Kappa

**Quality Control Testing:** Antibody Reactive Against Recombinant Protein.



Western Blot detection against Immunogen (63.8 KDa) .

**Storage Buffer:** In 1x PBS, pH 7.4

**Storage Instruction:** Store at -20°C or lower. Aliquot to avoid repeated freezing and thawing.

**MSDS:** [Download](#)

**Datasheet:** [Download](#)

### Applications

**Western Blot (Recombinant protein)**

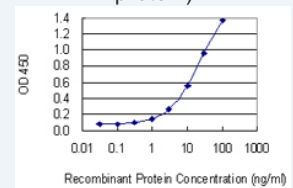
[Protocol Download](#)

**Sandwich ELISA (Recombinant protein)**

### Application Image

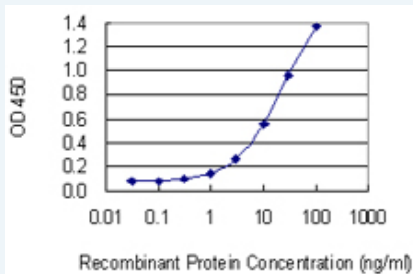
Western Blot (Recombinant protein)

Sandwich ELISA (Recombinant protein)



[enlarge](#)

ELISA



Detection limit for recombinant GST tagged HELLS is 0.3 ng/ml as a capture antibody.

 [Protocol Download](#)

## ELISA

### Gene Information

Entrez GeneID: [3070](#)

GeneBank [BC030963](#)

Accession#:

Protein [AAH30963](#)

Accession#:

Gene Name: HELLS

Gene Alias: FLJ10339,LSH,Nbla10143,PASG,SMARCA6

Gene Description: helicase, lymphoid-specific

Omim ID: [603946](#)

Gene Ontology: [Hyperlink](#)

**Gene Summary:** This gene encodes a lymphoid-specific helicase. Other helicases function in processes involving DNA strand separation, including replication, repair, recombination, and transcription. This protein is thought to be involved with cellular proliferation and may play a role in leukemogenesis. Alternatively spliced transcript variants have been described, but their biological validity has not been determined. [provided by RefSeq]

**Other Designations:** OTTHUMP00000020127,SWI/SNF2-related, matrix-associated, actin-dependent regulator of chromatin, subfamily A, member 6,proliferation-associated SNF2-like protein

### Related Disease

[Genetic Predisposition to Disease Neoplasms, Glandular and Epithelial Ovarian cancer Ovarian Neoplasms](#)