



SZABO SCANDIC

Part of Europa Biosite

Produktinformation



Forschungsprodukte & Biochemikalien



Zellkultur & Verbrauchsmaterial



Diagnostik & molekulare Diagnostik



Laborgeräte & Service

Weitere Information auf den folgenden Seiten!
See the following pages for more information!



Lieferung & Zahlungsart

siehe unsere [Liefer- und Versandbedingungen](#)

Zuschläge

- Mindermengenzuschlag
- Trockeneiszuschlag
- Gefahrgutzuschlag
- Expressversand

SZABO-SCANDIC HandelsgmbH

Quellenstraße 110, A-1100 Wien

T. +43(0)1 489 3961-0

F. +43(0)1 489 3961-7

mail@szabo-scandic.com

www.szabo-scandic.com

[linkedin.com/company/szaboscandic](https://www.linkedin.com/company/szaboscandic) 

CFH 293T Cell Transient Overexpression Lysate(Denatured)

Catalog # : H00003075-T01

規格 : [100 uL]

[List All](#)

Specification

Transfected Cell Line: 293T

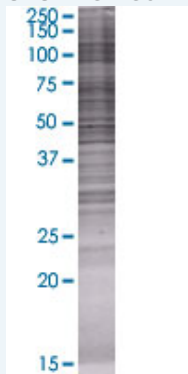
Plasmid: pCMV-CFH full-length

Host: Human

Theoretical MW (kDa): 49.5

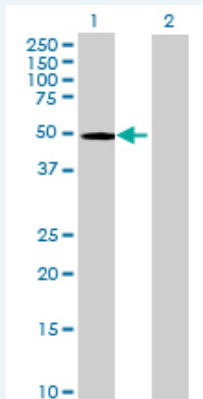
Quality Control Testing: Transient overexpression cell lysate was tested with Anti-CFH antibody (H00003075-B01) by Western Blots.

SDS-PAGE Gel



CFH transfected lysate.

Western Blot



Lane 1: CFH transfected lysate (49.5 KDa)

Lane 2: Non-transfected lysate.

Storage Buffer: 1X Sample Buffer (50 mM Tris-HCl, 2% SDS, 10% glycerol, 300 mM 2-mercaptoethanol, 0.01% Bromophenol blue)

Storage Instruction: Store at -80°C. Aliquot to avoid repeated freezing and thawing.

MSDS:  [Download](#)

Applications

Western Blot

Gene Information

Entrez GeneID: [3075](#)

GeneBank Accession#: [NM_001014975.1](#)

Protein Accession#: [NP_001014975.1](#)

Gene Name: CFH

Gene Alias: ARMD4,ARMS1,CFHL3,FH,FHL1,HF,HF1,HF2,HUS,MGC88246

Gene Description: complement factor H

Omim ID: [134370](#), [235400](#), [609814](#), [610698](#)

Gene Ontology: [Hyperlink](#)

Gene Summary: This gene is a member of the Regulator of Complement Activation (RCA) gene cluster and encodes a protein with twenty short consensus repeat (SCR) domains. This protein is secreted into the bloodstream and has an essential role in the regulation of complement activation, restricting this innate defense mechanism to microbial infections. Mutations in this gene have been associated with hemolytic-uremic syndrome (HUS) and chronic hypocomplementemic nephropathy. Alternate transcriptional splice variants, encoding different isoforms, have been characterized. [provided by RefSeq]

Other Designations: H factor 1 (complement),H factor 2 (complement),OTTHUMP00000033598,age-related maculopathy susceptibility 1,beta-1-H-globulin,beta-1H,complement factor H, isoform b,factor H,factor H-like 1

Gene Pathway

[Complement and coagulation cascades](#)

Related Disease

[Alport syndrome](#) [Alzheimer Disease](#) [Alzheimer disease](#) [Arthritis, Rheumatoid](#) [Asthma](#) [Ataxia Telangiectasia](#) [Ataxia telangiectasia](#) [Atherosclerosis](#) [Atherosclerosis](#) [Atrophy](#) [Blindness](#) [Brain Ischemia](#) [Calcinosis](#) [Cardiovascular Diseases](#) [Carotid Artery Diseases](#) [Cerebrovascular Accident](#) [Chlamydia Infections](#) [Chlamydomonada Infections](#) [Choroid Diseases](#)

... see more