



SZABO SCANDIC

Part of Europa Biosite

Produktinformation



Forschungsprodukte & Biochemikalien



Zellkultur & Verbrauchsmaterial



Diagnostik & molekulare Diagnostik



Laborgeräte & Service

Weitere Information auf den folgenden Seiten!
See the following pages for more information!



Lieferung & Zahlungsart

siehe unsere [Liefer- und Versandbedingungen](#)

Zuschläge

- Mindermengenzuschlag
- Trockeneiszuschlag
- Gefahrgutzuschlag
- Expressversand

SZABO-SCANDIC HandelsgmbH

Quellenstraße 110, A-1100 Wien

T. +43(0)1 489 3961-0

F. +43(0)1 489 3961-7

mail@szabo-scandic.com

www.szabo-scandic.com

[linkedin.com/company/szaboscandic](https://www.linkedin.com/company/szaboscandic) 

HFE monoclonal antibody (M01), clone 1G12

Catalog # : H00003077-M01

規格 : [100 ug]

[List All](#)

Specification

Product Description: Mouse monoclonal antibody raised against a partial recombinant HFE.

Immunogen: HFE (NP_000401, 115 a.a. ~ 205 a.a) partial recombinant protein with GST tag. MW of the GST tag alone is 26 KDa.

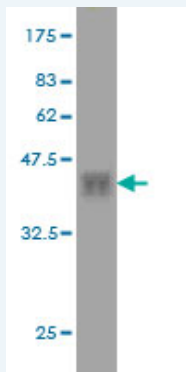
Sequence: SHTLQVILGCEMQEDNSTEGYWKYGYDGGQDHLFCPDTLDWRRAEPR
AWPTKLEWERHKIRARQNRAYLERDQCPAQLQQLLELGRGVLDQQ

Host: Mouse

Reactivity: Human

Isotype: IgG1 Kappa

Quality Control Testing: Antibody Reactive Against Recombinant Protein.



Western Blot detection against Immunogen (35.75 KDa) .

Storage Buffer: In 1x PBS, pH 7.4

Storage Instruction: Store at -20°C or lower. Aliquot to avoid repeated freezing and thawing.

MSDS: [Download](#)

Datasheet: [Download](#)

Publication Reference

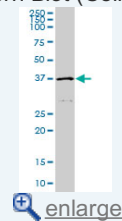
1. [Hemochromatosis Enhances Tumor Progression via Upregulation of Intracellular Iron in Head and Neck Cancer.](#)
Lenarduzzi M, Hui AB, Yue S, Ito E, Shi W, Williams J, Bruce J, Sakemura-Nakatsugawa N, Xu W, Schimmer A, Liu FFPLoS One. 2013 Aug 26;8(8):e74075. doi: 10.1371/journal.pone.0074075.

Applications

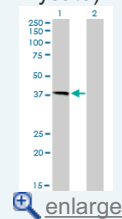
Western Blot (Cell lysate)

Application Image

Western Blot (Cell lysate)

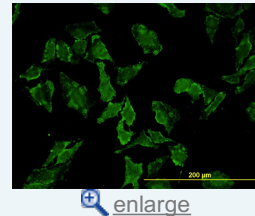


Western Blot (Transfected lysate)

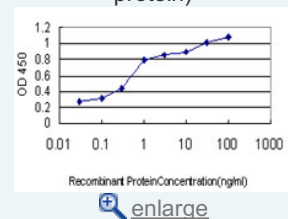


Western Blot (Recombinant protein)

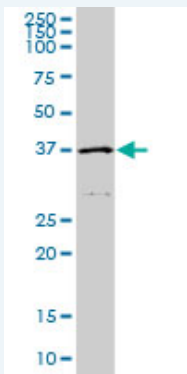
Immunofluorescence



Sandwich ELISA (Recombinant protein)



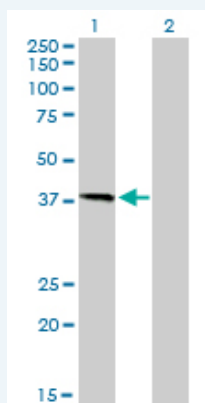
ELISA



HFE monoclonal antibody (M01), clone 1G12. Western Blot analysis of HFE expression in A-431.

 [Protocol Download](#)

Western Blot (Transfected lysate)



Western Blot analysis of HFE expression in transfected 293T cell line by HFE monoclonal antibody (M01), clone 1G12.

Lane 1: HFE transfected lysate(40.1 KDa).

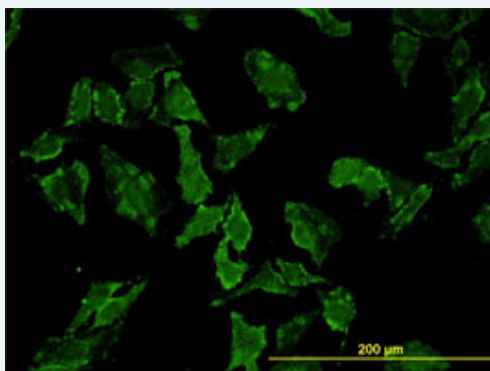
Lane 2: Non-transfected lysate.


 [Protocol Download](#)

Western Blot (Recombinant protein)


 [Protocol Download](#)

Immunofluorescence

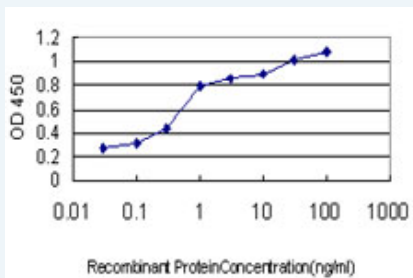


 [enlarge this image](#)

Immunofluorescence of monoclonal antibody to HFE on HeLa cell. [antibody concentration 10 ug/ml]

 [Protocol Download](#)

Sandwich ELISA (Recombinant protein)



Detection limit for recombinant GST tagged HFE is approximately 0.03ng/ml as a capture antibody.

 [Protocol Download](#)

ELISA

Gene Information

Entrez GeneID: [3077](#)

GeneBank [NM_000410](#)

Accession#:

Protein [NP_000401](#)

Accession#:

Gene Name: HFE

Gene Alias: HFE1,HH,HLA-H,MGC103790,dJ221C16.10.1

Gene Description: hemochromatosis

Omim ID: [176200](#), [235200](#)

Gene Ontology: [Hyperlink](#)

Gene Summary: The protein encoded by this gene is a membrane protein that is similar to MHC class I-type proteins and associates with beta2-microglobulin (beta2M). It is thought that this protein functions to regulate iron absorption by regulating the interaction of the transferrin receptor with transferrin. The iron storage disorder, hereditary haemochromatosis, is a recessive genetic disorder that results from defects in this gene. At least nine alternatively spliced variants have been described for this gene. Additional variants have been found but their full-length nature has not been determined. [provided by RefSeq]

Other Designations: MHC class I-like protein HFE,hemochromatosis protein,hereditary hemochromatosis protein HLA-H

Related Disease

[Abortion, Spontaneous](#) [Activated Protein C Resistance](#) [Acute Disease](#) [Adenocarcinoma](#) [Adenoma](#) [Adenomatous Polyps](#) [Albuminuria](#) [Alcoholism](#) [alpha 1-Antitrypsin Deficiency](#) [alpha-Thalassemia](#) [Alzheimer Disease](#) [Alzheimer disease](#) [Amyotrophic Lateral Sclerosis](#) [Amyotrophic lateral sclerosis](#) [Anemia](#) [Anemia, Iron-Deficiency](#) [Anemia, Sickle Cell](#) [Anemia, sickle cell](#) [Arteriosclerosis](#)

... see more