



# SZABO SCANDIC

Part of Europa Biosite

## Produktinformation



Forschungsprodukte & Biochemikalien



Zellkultur & Verbrauchsmaterial



Diagnostik & molekulare Diagnostik



Laborgeräte & Service

Weitere Information auf den folgenden Seiten!  
See the following pages for more information!



### Lieferung & Zahlungsart

siehe unsere [Liefer- und Versandbedingungen](#)

### Zuschläge

- Mindermengenzuschlag
- Trockeneiszuschlag
- Gefahrgutzuschlag
- Expressversand

### SZABO-SCANDIC HandelsgmbH

Quellenstraße 110, A-1100 Wien

T. +43(0)1 489 3961-0

F. +43(0)1 489 3961-7

[mail@szabo-scandic.com](mailto:mail@szabo-scandic.com)

[www.szabo-scandic.com](http://www.szabo-scandic.com)

[linkedin.com/company/szaboscandic](https://www.linkedin.com/company/szaboscandic) 

## CFHL1 MaxPab mouse polyclonal antibody (B02) MaxPab®

Catalog # : H00003078-B02

規格 : [ 50 uL ]

[List All](#)

### Specification

**Product Description:** Mouse polyclonal antibody raised against a full-length human CFHL1 protein.

**Immunogen:** CFHL1 (NP\_002104.2, 1 a.a. ~ 330 a.a) full-length human protein.

**Sequence:**  
 MWLLVSVILISRISSVGGGEATFCDFPKINHGILYDEEKYKPFQVPTGEVF  
 YYSCEYNFVSPSKSFWTRITCTEEGWSPTPKCLRLCFFPFVENGHSESS  
 GQTHLEGDTVQIICNTGYRLQNNENNISCVERGWSTPPKCRSTDTSCVN  
 PPTVQNAHILSRQMSKYPSGERVRYECSRPEYEMFGDEEVMCLNGNWTE  
 PPQCKDSTGKCGPPPIDNGDITSFPLSVYAPASSVEYQCQNLYQLEGN  
 KRITCRNGQWSEPPKCLHPCVISREIMENYNIALRWTAKQKLYLRTGESA  
 Efvckrgyrlssrshtlrttcwdgkleyptcakr

**Host:** Mouse

**Reactivity:** Human

**Quality Control Testing:** Antibody reactive against mammalian transfected lysate.

**Storage Buffer:** No additive

**Storage Instruction:** Store at -20°C or lower. Aliquot to avoid repeated freezing and thawing.

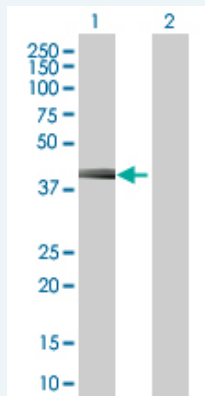
**Note:** For IHC and IF applications, antibody purification with Protein A will be needed prior to use.

**MSDS:**  [Download](#)

**Datasheet:**  [Download](#)

### Applications

#### Western Blot (Transfected lysate)



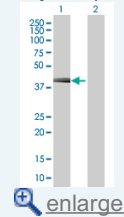
Western Blot analysis of CFHL1 expression in transfected 293T cell line ([H00003078-T02](#)) by CFHL1 MaxPab polyclonal antibody.

Lane 1: CFHL1 transfected lysate(36.3 kDa).

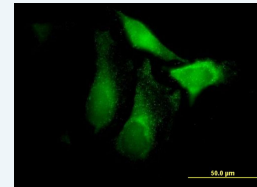
Lane 2: Non-transfected lysate.

### Application Image

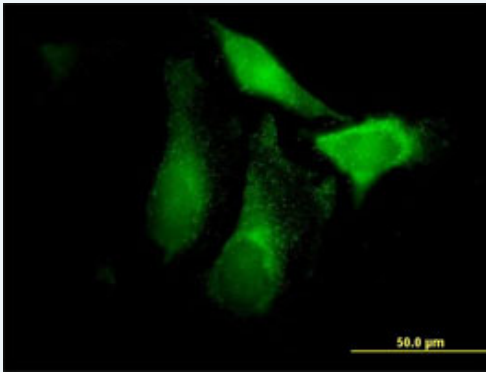
#### Western Blot (Transfected lysate)




#### Immunofluorescence



## Immunofluorescence



 enlarge this image

Immunofluorescence of purified MaxPab antibody to CFHR1 on HeLa cell. [antibody concentration 10 ug/ml]

## Gene Information

**Entrez GeneID:** [3078](#)

**GeneBank Accession#:** [BC016755.1](#)

**Protein Accession#:** [NP\\_002104.2](#)

**Gene Name:** CFHR1

**Gene Alias:** CFHL,CFHL1,CFHL1P,CFHR1P,FHR1,H36-1,H36-2,HFL1,HFL2,MGC104329

**Gene Description:** complement factor H-related 1

**Omim ID:** [134371](#)

**Gene Ontology:** [Hyperlink](#)

**Other Designations:** H factor (complement)-like 1,H factor (complement)-like 2,OTTHUMP00000034408,complement factor H-related 1 pseudogene

## Related Disease

[Cardiovascular Diseases](#) [Diabetes Mellitus, Type 2](#) [Edema](#)  
[Genetic Predisposition to Disease](#) [Hemolytic-Uremic Syndrome](#) [Lymphoma, Non-Hodgkin](#)  
[Macular Degeneration](#)