



SZABO SCANDIC

Part of Europa Biosite

Produktinformation



Forschungsprodukte & Biochemikalien



Zellkultur & Verbrauchsmaterial



Diagnostik & molekulare Diagnostik



Laborgeräte & Service

Weitere Information auf den folgenden Seiten!
See the following pages for more information!



Lieferung & Zahlungsart

siehe unsere [Liefer- und Versandbedingungen](#)

Zuschläge

- Mindermengenzuschlag
- Trockeneiszuschlag
- Gefahrgutzuschlag
- Expressversand

SZABO-SCANDIC HandelsgmbH

Quellenstraße 110, A-1100 Wien

T. +43(0)1 489 3961-0

F. +43(0)1 489 3961-7

mail@szabo-scandic.com

www.szabo-scandic.com

[linkedin.com/company/szaboscandic](https://www.linkedin.com/company/szaboscandic) 

CFHR1 purified MaxPab rabbit polyclonal antibody (D01P) MaxPab®

Catalog # : H00003078-D01P

規格 : [100 ug]

[List All](#)

Specification

Product Description: Rabbit polyclonal antibody raised against a full-length human CFHR1 protein.

Immunogen: CFHR1 (NP_002104.2, 1 a.a. ~ 330 a.a) full-length human protein.

Sequence:
 MWLLVSVILISRISSVGGGEATFCDFPKINHGILYDEEKYKPFSSQVPTGEVF
 YYSCEYNFVSPSKSFWTRITCTEEGWSPTPKLRLCFFPFVENGHSESS
 GQTHLEGDTVQIICNTGYRLQNNENNISCVERGWSTPPKCRSTDTSCVN
 PPTVQNAHILSRQMSKYPSGERVRYECSRPEYEMFGDEEVMCLNGNWTE
 PPQCKDSTGKCGPPPIDNGDITSFPLSVYAPASSVEYQCQNLYQLEGN
 KRITCRNGQWSEPPKCLHPCVISREIMENYNIALRWTAKQKLYLRTGESA
 EFVCKRGYRLSSRSHTLRITTCWDGKLEYPTCAKR

Host: Rabbit

Reactivity: Human

Quality Control Testing: Antibody reactive against mammalian transfected lysate.

Storage Buffer: In 1x PBS, pH 7.4

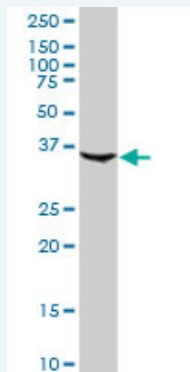
Storage Instruction: Store at -20°C or lower. Aliquot to avoid repeated freezing and thawing.

MSDS:  [Download](#)

Datasheet:  [Download](#)

Applications

Western Blot (Tissue lysate)



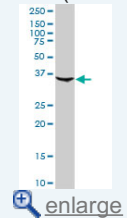
CFHR1 MaxPab rabbit polyclonal antibody. Western Blot analysis of CFHR1 expression in human liver.

 [Protocol Download](#)

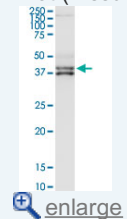
Western Blot (Tissue lysate)

Application Image

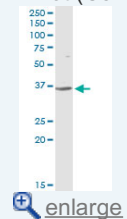
Western Blot (Tissue lysate)



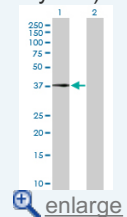
Western Blot (Tissue lysate)

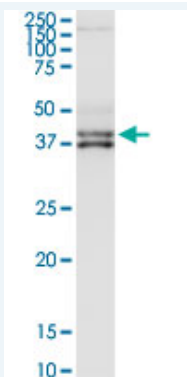


Western Blot (Cell lysate)



Western Blot (Transfected lysate)

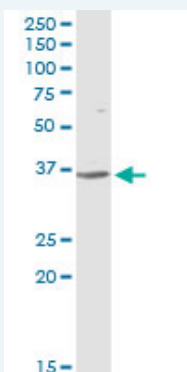




CFHR1 MaxPab rabbit polyclonal antibody. Western Blot analysis of CFHR1 expression in human placenta.

 [Protocol Download](#)

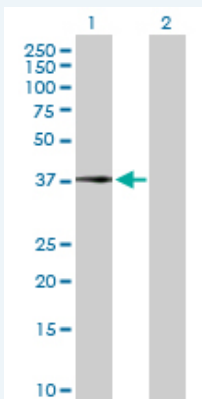
Western Blot (Cell lysate)



CFHR1 MaxPab rabbit polyclonal antibody. Western Blot analysis of CFHR1 expression in HeLa.

 [Protocol Download](#)

Western Blot (Transfected lysate)



Western Blot analysis of CFHR1 expression in transfected 293T cell line ([H00003078-T04](#)) by CFHR1 MaxPab polyclonal antibody.

Lane 1: CFHR1 transfected lysate(37.70 KDa).

Lane 2: Non-transfected lysate.

 [Protocol Download](#)

Gene Information

Entrez GeneID: [3078](#)

GeneBank [BC016755.1](#)

Accession#:

Protein [NP_002104.2](#)

Accession#:

Gene Name: CFHR1

Gene Alias: CFHL,CFHL1,CFHL1P,CFHR1P,FHR1,H36-1,H36-2,HFL1,HFL2,MGC104329

Gene Description: complement factor H-related 1

Omim ID: [134371](#)

Gene Ontology: [Hyperlink](#)

Other Designations: H factor (complement)-like 1,H factor (complement)-like 2,OTTHUMP00000034408,complement factor H-related 1 pseudogene

Related Disease

[Cardiovascular Diseases](#) [Diabetes Mellitus, Type 2](#) [Edema](#)

[Genetic Predisposition to Disease](#) [Hemolytic-Uremic Syndrome](#) [Lymphoma, Non-Hodgkin](#)

[Macular Degeneration](#)

[服務條款](#) | [隱私權政策](#) | [著作及商標](#) | [網站地圖](#)

©2016 亞諾法生技股份有限公司 Abnova Corporation. 版權所有.